

San Simeon Transmission Main Repair

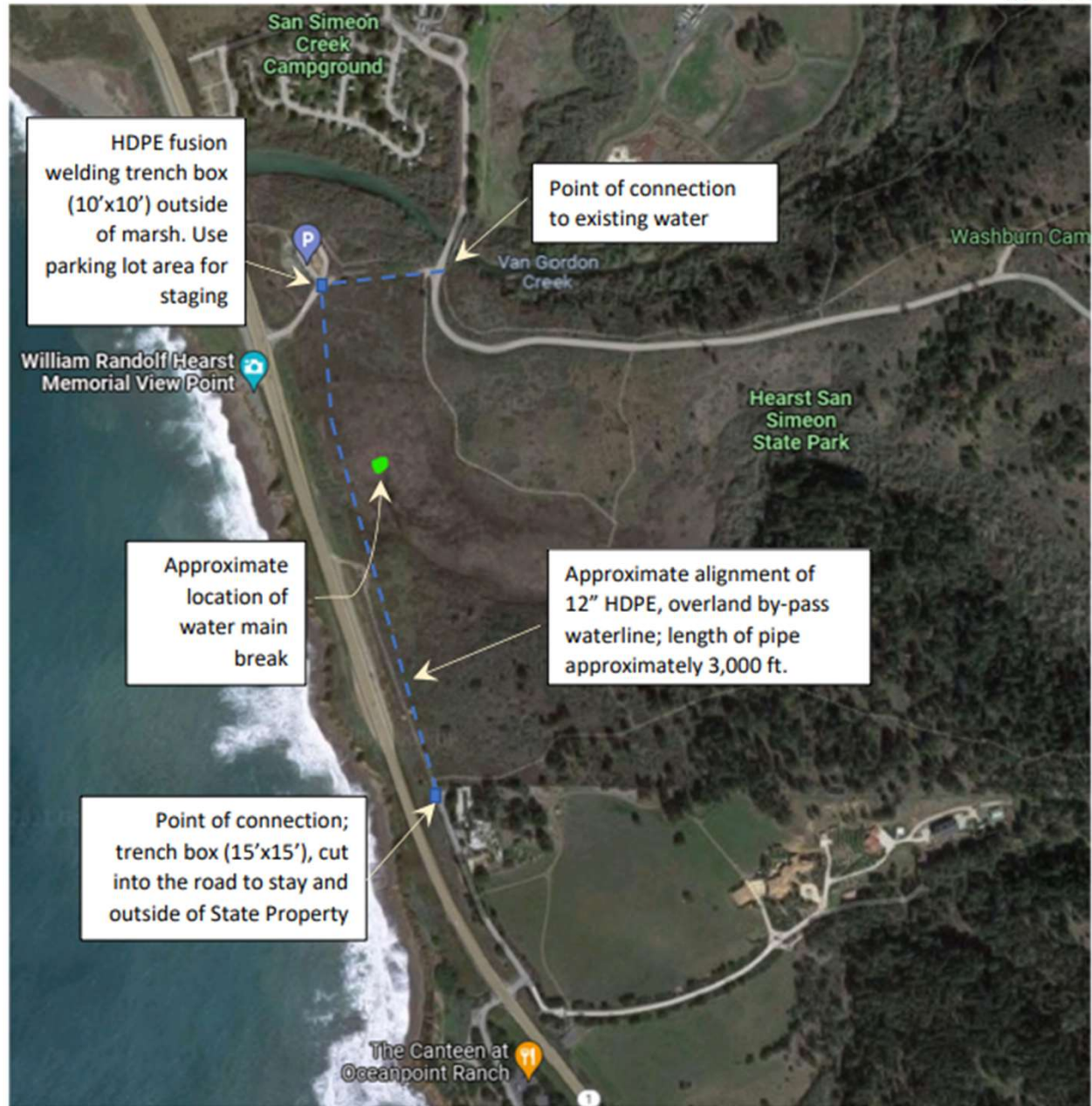


Figure 1- Site location of water main break and proposed repair

Summary of activities



12/29/2021	Construction of the overland by-pass HDPE main began immediately and continued through the weekend
12/30/2021	Staff installed a temporary tank and pump to provide water service to customers affected by the water main break
1/4/2022	Approximately 2900 LF HDPE completed
1/5/2022	Pressure testing began and successfully passed
1/6/2022	Disinfection process and bacteriological sampling occurred
1/7/2022	Lab analysis confirms non-detection of e. coli and coliform bacteria in by-pass pipeline
1/10/2022	Dewatering and flushing of bypass line occurs in preparation for interconnection
1/11/2022	Existing main located for interconnection
1/12/2022	Existing main ported and drained of residual water
1/13/2022	First phase of interconnection completed at northern tie-in. Excavation and trenching at Washburn Campground Rd began.
1/14/2022	Second phase of interconnection completed at southern tie-in
1/17/2022	Restore grounds from trenching activities; flushing process starts to establish service
1/18/2022- 1/19/2022	Complete flushing and verify pressures in campground; final restoration and clean-up, start up procedure fo SS Well pumps, power issue repaired, re-start up of SS Well pump (1/20/2022 as of 1pm)



Draft estimated costs

\$111K	Pipe and appurnenances – 2900LF 12” HDPE, valves, fittings
\$229K	Labor and equipment rental
\$15K	Environmental Monitoring
\$13K	Temporary tank and pump rental
\$368K	Draft Total Costs



Next steps

2022	Design alternatives for permanent project
2022-2023	Design of permanent project
2023	Environmental study for permanent project and Permitting
??	Bidding and Construction