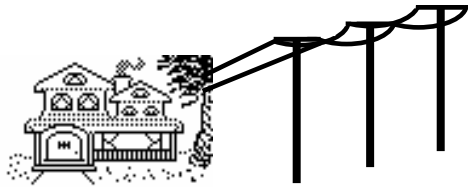


STANDBY GENERATOR SAFETY

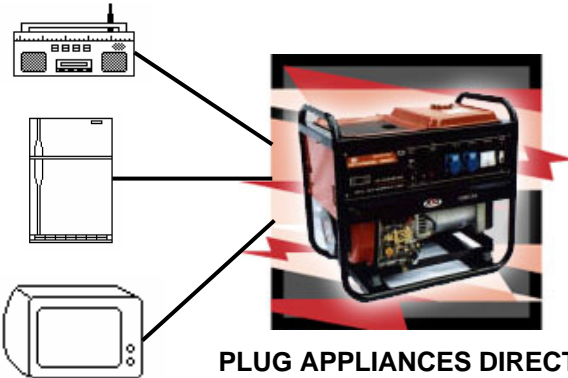
By law, and for safety, you **MUST** prevent power from your generator from feeding back into the power lines !
Generator must be electrically isolated from the power line at all times.
Connecting generator to house circuitry without a transfer switch is not permitted.

For more complete information see: <http://www.pge.com/generator/>

TEMPORARY CONNECTION

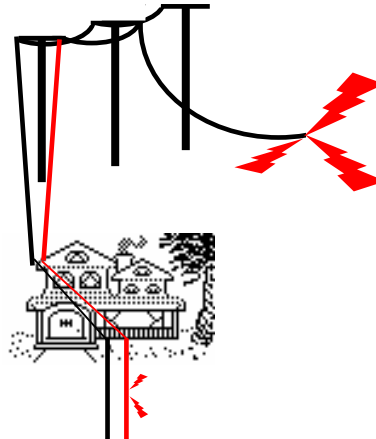


NO CONNECTION BETWEEN HOUSE WIRING AND GENERATOR



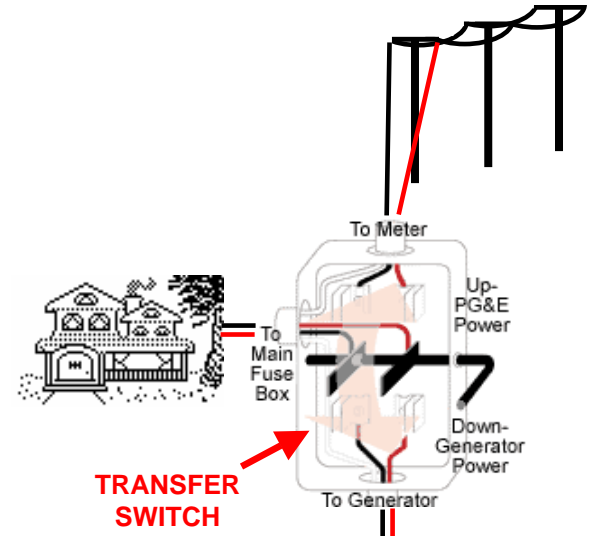
PLUG APPLIANCES DIRECTLY INTO GENERATOR

ILLEGAL CONNECTION



GENERATOR CONNECTED TO HOUSE WIRING

PERMANENT CONNECTION USES TRANSFER SWITCH



TRANSFER SWITCH

