

San Simeon Transmission Main and Effluent Line Repair

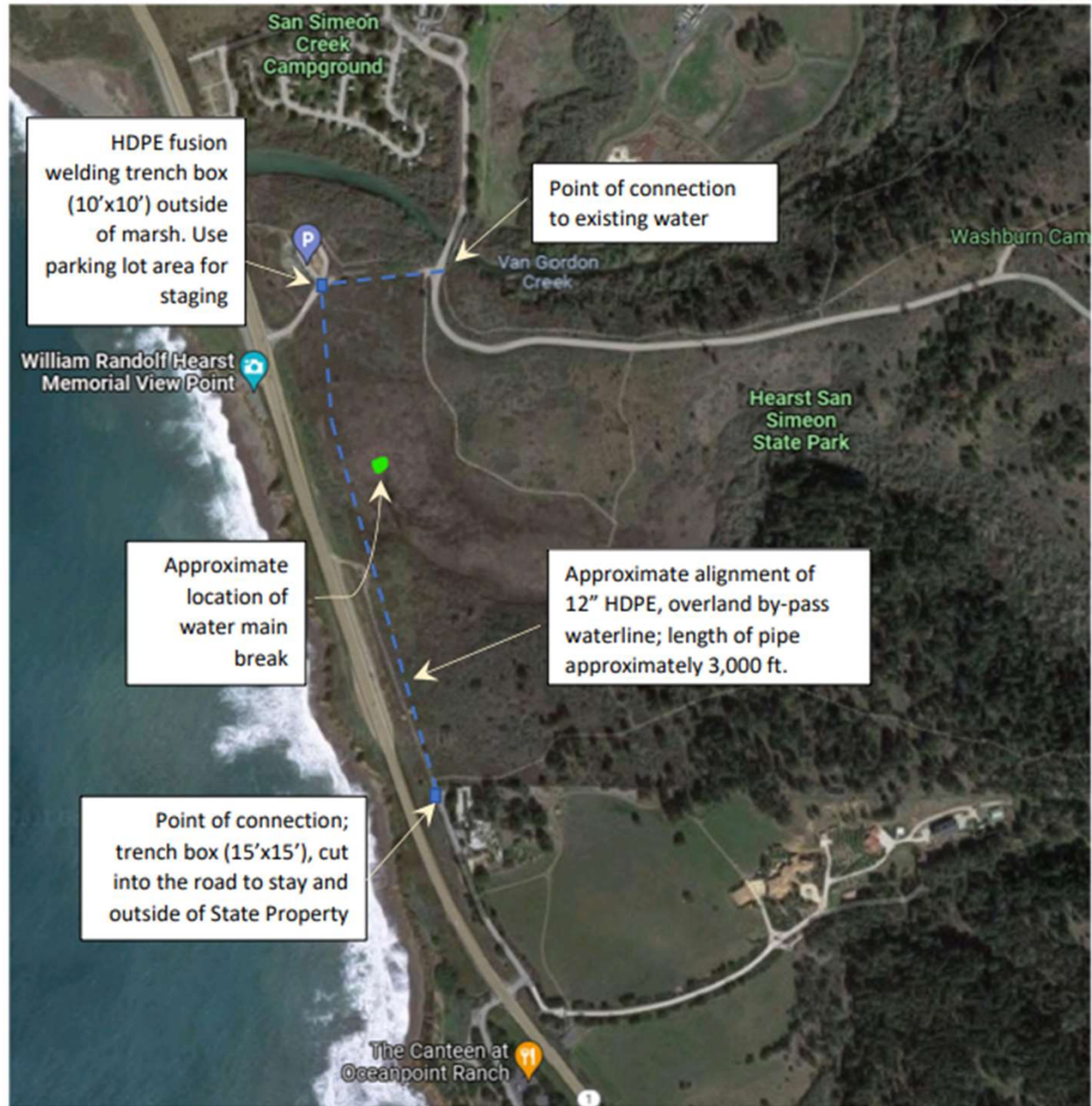


Figure 1- Site location of water main break and proposed repair



Design & Engineering Services for the Water and Wastewater Pipeline Replacement Project



- Project Description

- Replace an existing 14” diameter potable water pipeline and a 12” diameter wastewater effluent pipeline that were constructed circa 1978.
- The pipelines include a span of approximately 3000’ constructed within a 25’ easement through protected wetlands on California State Parks property.
- The effluent pipeline transports treated wastewater effluent to percolation ponds located on CCSD-owned property downgradient from the San Simeon Well Field and near the confluence of Van Gordon Creek.
- The potable water pipeline is the primary source of drinking water for the community of Cambria.

Design & Engineering Services for the Water and Wastewater Pipeline Replacement Project



- Scope of Services Requested
 - Project Coordination
 - Preliminary Engineering Evaluation and Design
 - Environmental
 - Permit Compliance
 - Surveying
 - Geotechnical Investigation
 - Preparation of Final Plans and Specifications
 - Bid Phase Services
 - Construction Phase Services
 - Project Close-out Services
 - Project Management and Administration

Proposal Results and Recommendations



- Receive 3 Qualified Proposals
 - History of design and engineering in SLO County and Coastal Communities
 - Depth of experience – geotechnical, permitting, surveying
- Recommend Interviews
- Recommend Interview Panel of Staff and One R&I Committee Members

San Simeon Transmission Main and Effluent Line Repair



Action	Date
Consultant Interviews	May 30-31, 2023
Present Results to R&I And Consider Recommendations	June 2023
Discuss Project Financing Alternatives to Finance Committee	June 2023
Present to the Board for Discussion and Consideration of Approval	July 2023

Questions?

