

## CAMBRIA COMMUNITY SERVICES WELL LEVELS

3/1/2023

Well Read Date

### SANTA ROSA CREEK WELLS

Well Name	Well Description/Location	Distance to Water Level (ft)	Reference Point Elevation AMSL (ft)	Depth AMSL (ft)	Comments
23R	High School	27.79	83.42	55.63	
<b>SR4*</b>	<b>CCCD Production</b>	<b>25.10</b>	82.00	<b>56.90</b>	
<b>SR3</b>	<b>CCSD Production</b>	<b>16.88</b>	54.30	<b>37.42</b>	
<b>SR1</b>	<b>CCSD</b>	15.20	46.40	31.20	
21R3	County Parks	6.11	12.88	6.77	Meter Read (CF): 46505
WBE	Windsor Bridge East	9.84	16.87	7.03	
WBW	Windsor Bridge West	10.27	17.02	6.75	

**SR4**                      **56.90**  
AVG SR1 & SR3                      34.31

### SAN SIMEON CREEK WELLS

Well Name	Well Description/Location	Distance to Water Level (ft)	Reference Point Elevation AMSL (ft)	Depth AMSL (ft)	Comments
16D1	Van Gorden Creek Bridge	6.67	11.36	4.69	
MW4	Monitoring at Lagoon Entrance	10.80	15.95	5.15	
MW1	Monitoring at Blowers	9.87	42.11	32.24	
MW2	Monitoring at Influent	11.38	38.10	26.72	
MW3	Monitoring at Pond Gate	14.66	49.56	34.90	
9M1	Warren's Van Gorden Creek	18.63	65.63	47.00	
9P2	Gradient Monitoring	8.37	19.11	10.74	
9P7	WRF Intake	8.91	20.69	11.78	
9L1	Abandoned Irrigation	13.08	27.33	14.25	
RIW	WRF Injection Well	9.09	25.41	16.32	
<b>SS4</b>	<b>CCCD</b>	12.13	25.92	13.79	
MIW	WRF Injection Monitoring	9.60	29.89	20.29	
<b>SS3*</b>	<b>CCSD Production</b>	<b>12.37</b>	33.73	<b>21.36</b>	
<b>SS2*</b>	<b>CCSD Production</b>	<b>11.07</b>	33.16	<b>22.09</b>	
<b>SS1*</b>	<b>CCSD Production</b>	<b>10.70</b>	32.37	<b>21.67</b>	
11B1	Pedotti	17.33	105.43	88.10	
11C1	Pedotti	12.39	98.20	85.81	
PFNW	Palmer Flats	11.33	93.22	81.89	
10A1	Pedotti's Recorder	23.45	78.18	54.73	
10G2	New Rock Plant	17.89	62.95	45.06	
10G1	Old Rock Plant	16.21	59.55	43.34	
10F2	Warren	24.13	66.92	42.79	
10M2	Pedotti	20.61	55.21	34.60	oil
9J3	Pedotti	13.78	43.45	29.67	
Lagoon	Creek Pedestrian Bridge	19.71			Mitigation Erosion: None

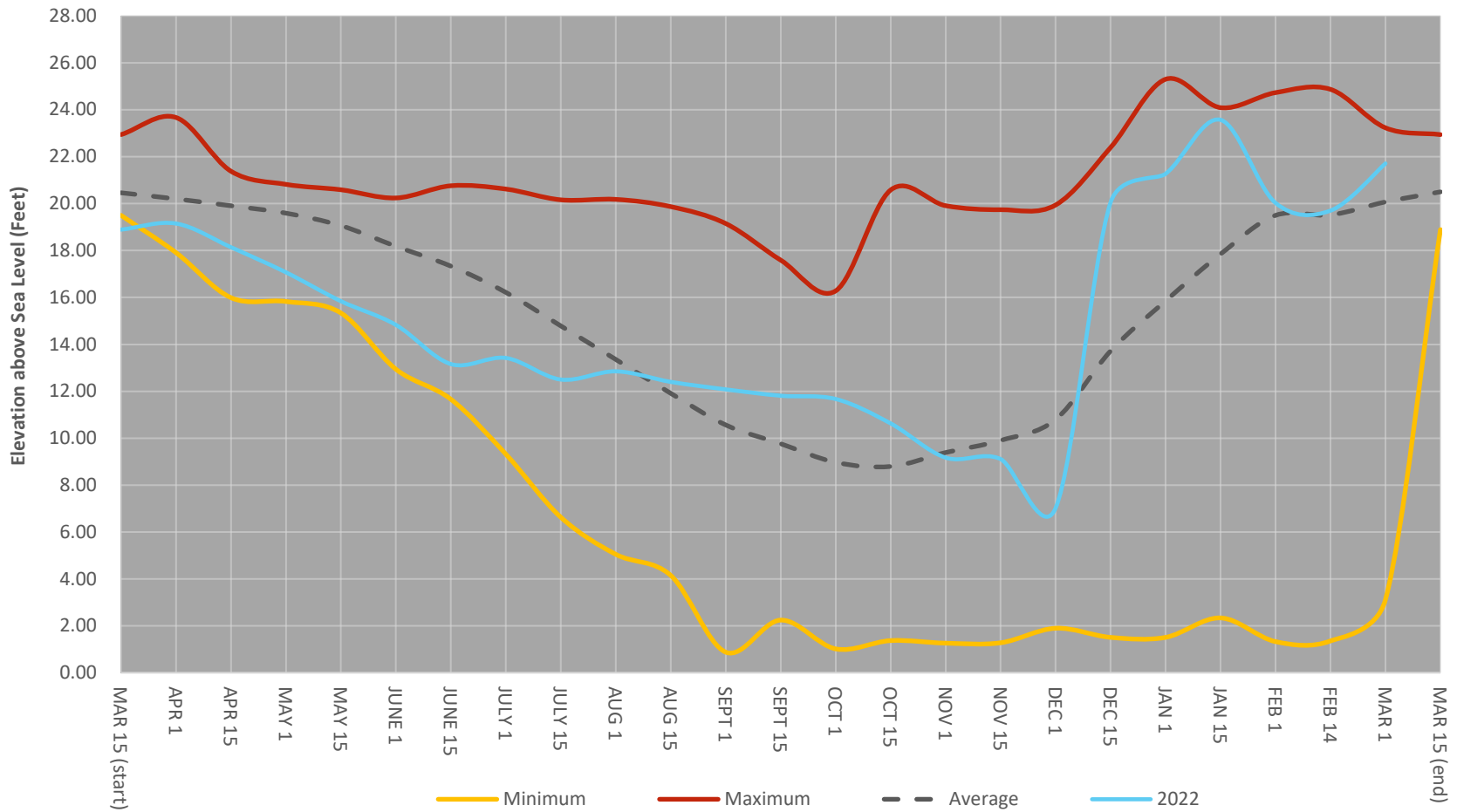
**AVG S1, SS2 & SS3**                      **21.71**  
**SS4/9P2 Gradient**                      **3.05**

\*Above Mean Sea Level (AMSL)

\*CCSD's Production Wells

Reference point on 16D1, MIW1, MIW2, MIW3, 9P7, RIW, MIW1, SS1, SS2 and SS3 updated on 2/17/2015

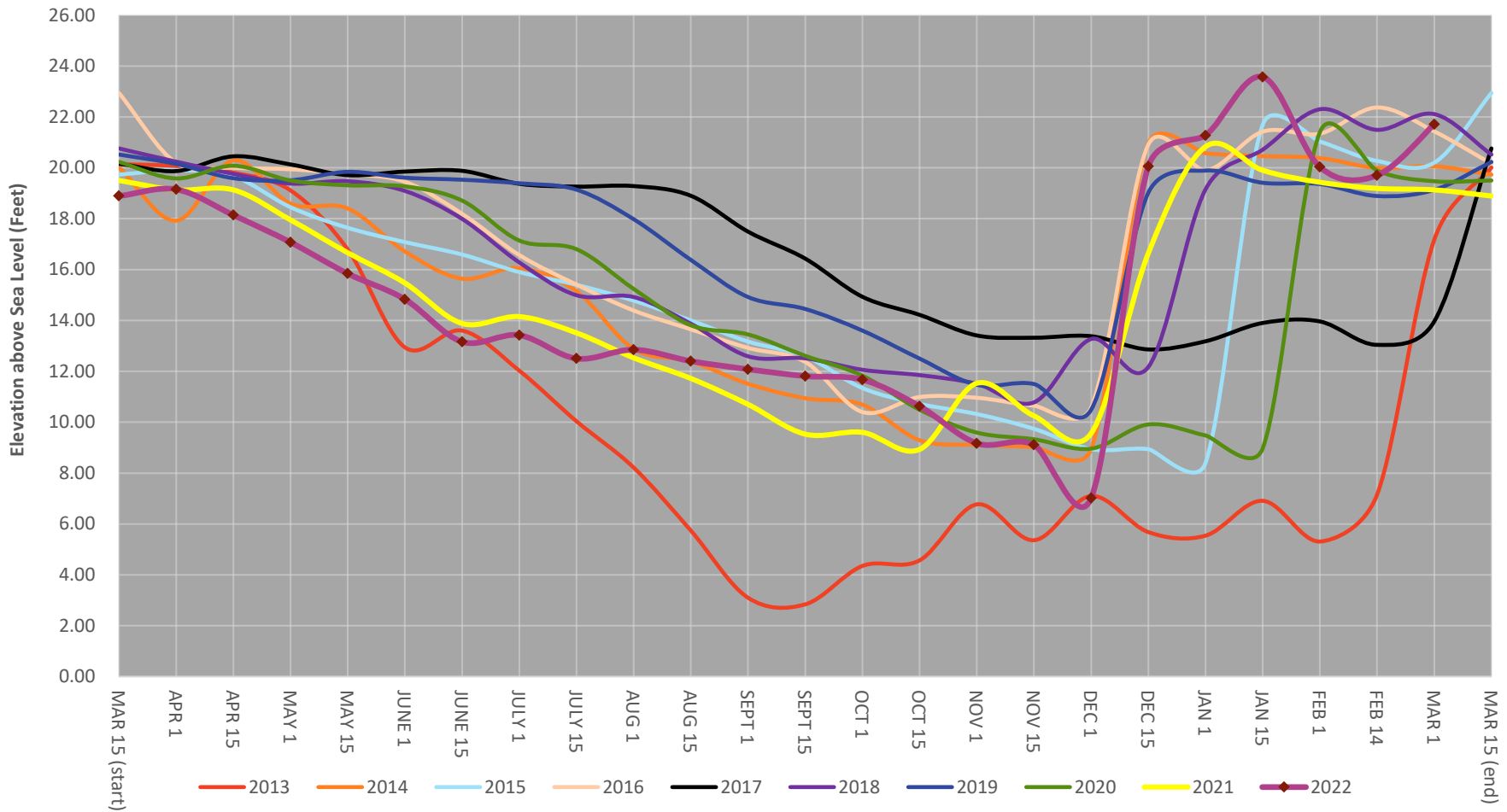
## San Simeon Creek Well Levels Mid-March 2022 levels to date and 1988 to Current Min, Max, & Average



# San Simeon Creek Well Levels

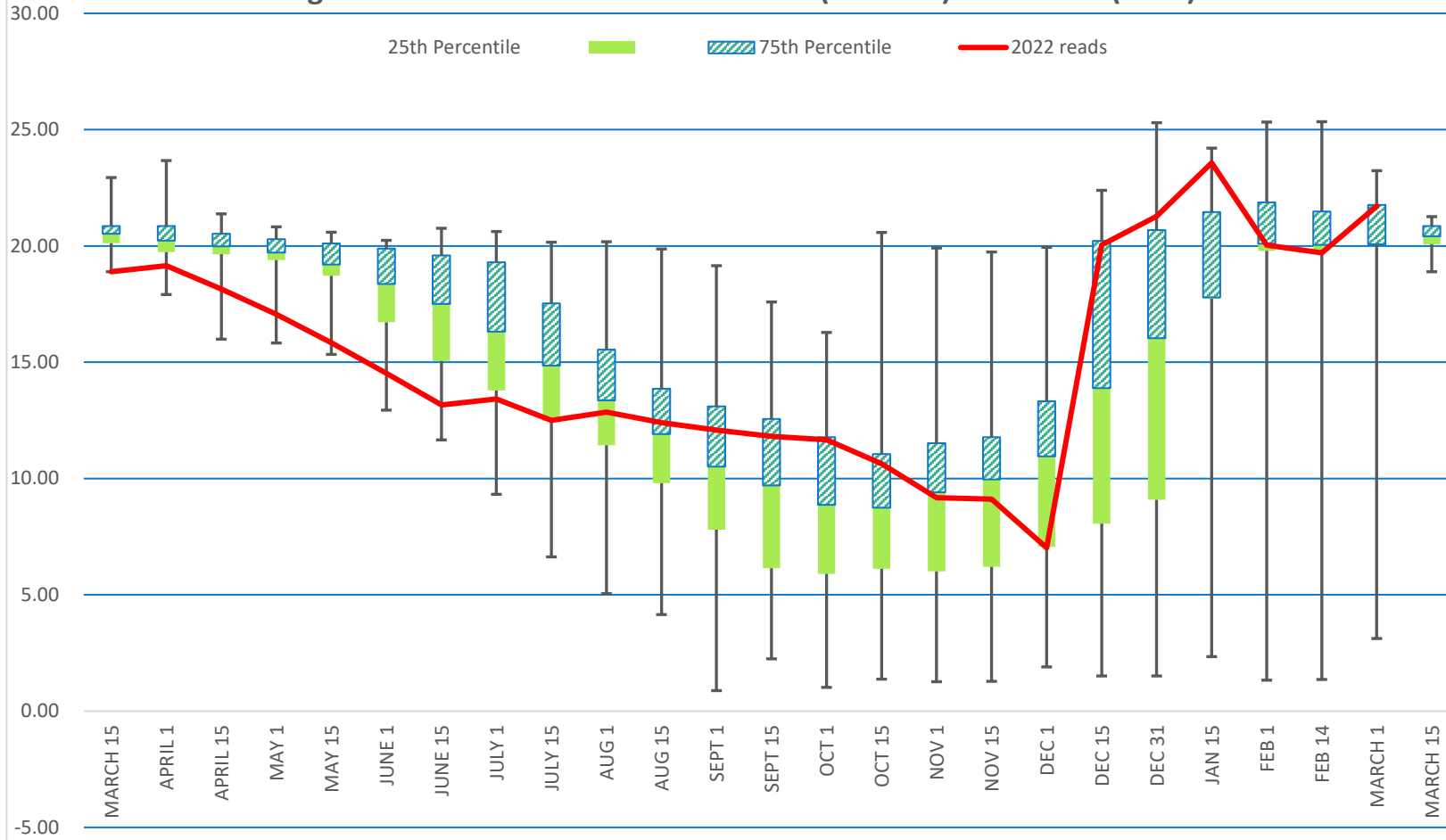
## Last 10 years

### March, 2013 - Current





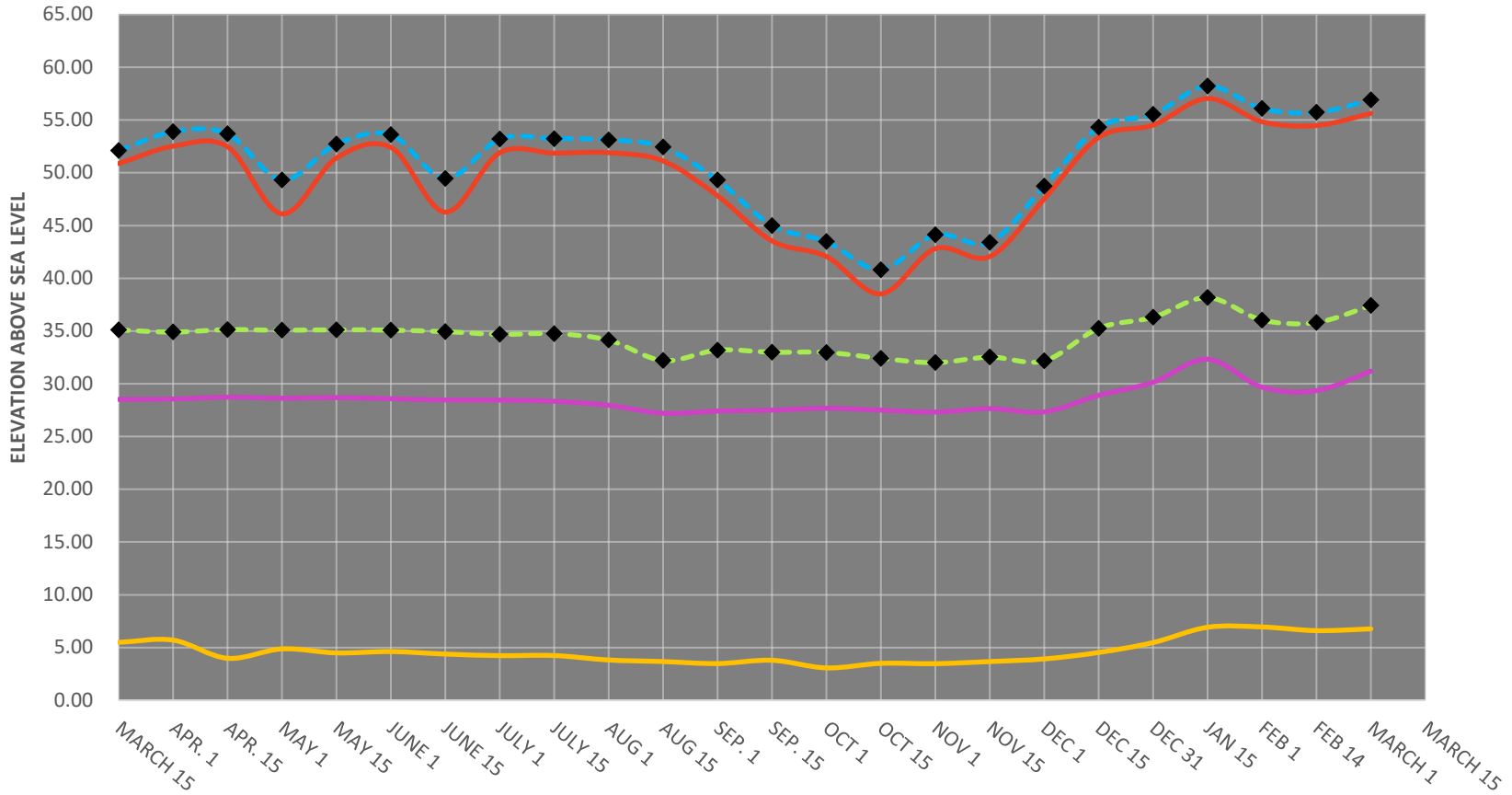
**1988 to Current Statistical San Simeon Well Level Summary by Month**  
**showing Minimums, Maximums, 25 % Percentile, 75% Percentile**  
**Average Level is the line between the Blue (hatched) and Green (solid) bars**



# SANTA ROSA CREEK WELL LEVELS

## March 15th, 2022 - Current

— 23R   
 -◆- SR4   
 -◆- SR3   
 — SR1   
 — WBE   
 ◆ Indicates CCSD Production wells



													= Projected			
													= Actual			
Potable Water Shortage Assessment <sup>1</sup>													Start Year: 2022		Volumetric Unit Used: AF	
	Jul	Aug	Sep	Oct	Nov	Dec	Jan	Feb	Mar	Apr	May	Jun	Total			
Anticipated Unconstrained Demand	52	52	48	48	44	44	39	39	39	39	49	49	542			
<b>Actual Demand</b>	<b>50.6</b>	<b>48.2</b>	<b>43.3</b>	<b>44.0</b>	<b>39.3</b>	<b>36.9</b>	<b>35.4</b>	<b>33.7</b>					<b>331.3</b>			
<b>Supply Adjustment</b>						<b>9.0</b>	<b>5.0</b>	<b>2.0</b>	<b>2.0</b>				<b>18.0</b>			
Anticipated Total Water Supply	45	45	42	42	37	44	39	39	39	37	40	42	491			
<b>Accrued Surplus/Shortage</b> from Previous Month		<b>-5.6</b>	<b>-3.2</b>	<b>-1.3</b>	<b>-2.0</b>	<b>-2.3</b>	<b>7.1</b>	<b>3.6</b>								
<b>Anticipated Surplus/Shortage</b> w/o WSCP Action	<b>-7.0</b>	<b>-12.7</b>	<b>-9.1</b>	<b>-7.2</b>	<b>-8.9</b>	<b>-2.1</b>	<b>6.7</b>	<b>3.2</b>	<b>0.3</b>	<b>-1.8</b>	<b>-9.1</b>	<b>-7.1</b>	<b>-54.9</b>			
<b>Anticipated % Surplus/Shortage</b> w/o WSCP Action	<b>-14%</b>	<b>-24%</b>	<b>-19%</b>	<b>-15%</b>	<b>-20%</b>	<b>-5%</b>	<b>17%</b>	<b>8%</b>	<b>1%</b>	<b>-5%</b>	<b>-19%</b>	<b>-15%</b>	<b>-10%</b>			
<b>State Standard Shortage Level</b>	<b>2</b>	<b>3</b>	<b>2</b>	<b>2</b>	<b>3</b>	<b>1</b>	<b>1</b>	<b>1</b>	<b>1</b>	<b>1</b>	<b>2</b>	<b>2</b>	<b>2</b>			
<b>Planned WSCP Actions</b>																
Anticipated Benefit from WSCP: Supply Augmentation	0.0	0.0	0.0	0.0	0.0	0.0	0.0	0.0	0.0	0.0	0.0	0.0	0.0			
Anticipated Benefit from WSCP: Demand Reduction	10.4	15.6	9.6	9.6	8.8	11.0	2.0	0.0	0.0	3.9	9.8	9.8	90.4			
<b>Actual Benefit from WSCP Action</b>	<b>1.4</b>	<b>3.8</b>	<b>4.6</b>	<b>3.9</b>	<b>4.6</b>	<b>7.0</b>	<b>4.0</b>	<b>5.7</b>					<b>35.1</b>			
<b>Anticipated Surplus/Shortage</b> w/WSCP Action	<b>3.4</b>	<b>2.9</b>	<b>0.5</b>	<b>2.4</b>	<b>-0.1</b>	<b>8.9</b>	<b>8.7</b>	<b>3.2</b>	<b>0.3</b>	<b>2.1</b>	<b>0.7</b>	<b>2.7</b>	<b>35.6</b>			
<b>Anticipated % Surplus/Shortage</b> w/WSCP Action	<b>6%</b>	<b>6%</b>	<b>1%</b>	<b>5%</b>	<b>0%</b>	<b>20%</b>	<b>22%</b>	<b>8%</b>	<b>1%</b>	<b>5%</b>	<b>1%</b>	<b>5%</b>	<b>7%</b>			
<b>Actual Surplus/Shortage</b>	<b>-5.6</b>	<b>-3.2</b>	<b>-1.3</b>	<b>-2.0</b>	<b>-2.3</b>	<b>7.1</b>	<b>3.6</b>	<b>5.3</b>					<b>1.7</b>			
<b>Actual % Surplus/Shortage</b>	<b>-11%</b>	<b>-7%</b>	<b>-3%</b>	<b>-5%</b>	<b>-6%</b>	<b>19%</b>	<b>10%</b>	<b>16%</b>					<b>1%</b>			
<b>State Standard Shortage Level Achieved</b>	<b>2</b>	<b>1</b>	<b>1</b>	<b>1</b>	<b>1</b>	<b>1</b>	<b>1</b>	<b>1</b>	<b>1</b>	<b>1</b>	<b>1</b>	<b>1</b>	<b>1</b>			

<sup>1</sup> Assessments are based on best available data at time of submitting the report and actual volumes could be different due to many factors.

### Definitions for Terms Used in This Table

**Anticipated Unconstrained Demand:** Projection based on the average water production over the last 3 reporting years (July 2018 -June 2021).

**Actual Demand:** The total amount of potable water produced for the month.

**Supply Adjustment:** Observed aquifer recharge/depletion from seasonal precipitation/lack thereof.

**Anticipated Total Water Supply:** The target amount to be produced assuming dry years conditions.

**Anticipated Surplus/Shortage w/o WSCP:** The volumetric difference in the anticipated unconstrained demand and anticipated total water supply without any shortage response actions.

**Anticipated % Surplus/Shortage w/o WSCP Action:** The difference in the anticipated unconstrained demand and anticipated total water supply without any shortage response actions expressed as a percentage.

**State Standard Shortage Level:** The corresponding shortage level per California Water Code Section 10632(a)(3)(A).

**Anticipated Benefit from WSCP - Supply Augmentation:** Projected volume of water added to the supply, such as from the operation of the Water Reclamation Facility.

**Anticipated Benefit from WSCP - Demand Reduction:** Projected volume of water conserved through shortage response actions.

**Actual Benefit from WSCP Action:** Actual supply augmentation or demand reduction achieved.

**Revised Anticipated Surplus/Shortage w/WSCP Action:** Volumetric difference between the anticipated surplus/shortage w/o WSCP action and the actual benefits obtained.

**Revised Anticipated % Surplus/Shortage w/WSCP Action:** Difference between the anticipated surplus/shortage w/o WSCP action and the actual benefits obtained expressed as a percentage.

**Actual Surplus/Shortage:** Volumetric difference between the anticipated total water supply (including any adjustments) and the actual total demand.

**Actual % Surplus/Shortage:** Difference between the anticipated total water supply (including any adjustments) and the actual total demand expressed as a percentage.

**WSCP:** Water Shortage Contingency Plan





**2023**  
**CAMBRIA COMMUNITY SERVICES DISTRICT**  
**NET WATER DIVERSION, BY SOURCE**  
**REPORTED IN ACRE-FEET**

YEAR	SOURCE	JAN	FEB	MAR	APR	MAY	JUN	JUL	AUG	SEP	OCT	NOV	DEC	ANNUAL TOTAL	YEAR
<b>DIFFERENCE</b> (Current YR - Previous YR)		<b>-2.02</b>	<b>-4.61</b>												
<b>2023</b>	S.S.	34.88	30.88	0.00	0.00	0.00	0.00	0.00	0.00	0.00	0.00	0.00	0.00	65.76	<b>2023</b>
	S.R.	0.40	0.48	0.00	0.00	0.00	0.00	0.00	0.00	0.00	0.00	0.00	0.00	0.88	
	<b>SS &amp; SR TOTAL</b>	<b>35.28</b>	<b>31.36</b>	<b>0.00</b>	<b>0.00</b>	<b>0.00</b>	<b>0.00</b>	<b>0.00</b>	<b>0.00</b>	<b>0.00</b>	<b>0.00</b>	<b>0.00</b>	<b>0.00</b>	<b>66.64</b>	
	AWTP	0.00	0.00	0.00	0.00	0.00	0.00	0.00	0.00	0.00	0.00	0.00	0.00	0.00	
<b>2022</b>	S.S.	13.35	35.93	40.71	39.95	43.22	33.05	26.13	19.40	13.74	17.92	31.27	36.45	351.11	<b>2022</b>
	S.R.	23.95	0.04	0.03	0.04	0.05	11.17	23.27	27.59	28.77	25.30	7.44	0.32	147.98	
	<b>SS &amp; SR TOTAL</b>	<b>37.30</b>	<b>35.97</b>	<b>40.74</b>	<b>39.99</b>	<b>43.27</b>	<b>44.22</b>	<b>49.41</b>	<b>46.98</b>	<b>42.50</b>	<b>43.22</b>	<b>38.71</b>	<b>36.77</b>	<b>499.09</b>	
	AWTP	0.00	0.00	0.00	0.00	0.00	0.00	0.00	0.00	0.00	0.00	0.00	0.00	0.00	
<b>2021</b>	S.S.	31.92	26.91	34.69	36.88	36.41	34.84	31.03	30.49	31.75	27.27	27.28	21.16	370.62	<b>2021</b>
	S.R.	9.00	10.22	8.91	9.05	12.02	14.41	20.65	16.40	11.30	14.52	11.69	16.81	155.00	
	<b>SS &amp; SR TOTAL</b>	<b>40.92</b>	<b>37.14</b>	<b>43.60</b>	<b>45.93</b>	<b>48.43</b>	<b>49.25</b>	<b>51.68</b>	<b>46.89</b>	<b>43.05</b>	<b>41.79</b>	<b>38.97</b>	<b>37.97</b>	<b>525.61</b>	
	AWTP	0.00	0.00	0.00	0.00	0.00	0.00	0.00	0.00	0.00	0.00	0.00	0.00	0.00	
<b>2020</b>	S.S.	34.86	34.07	30.68	26.63	36.29	40.67	33.16	35.23	34.60	39.39	31.34	13.98	390.90	<b>2020</b>
	S.R.	4.10	5.37	6.32	8.97	7.21	7.77	19.10	17.85	14.22	10.67	12.61	27.85	142.04	
	<b>SS &amp; SR TOTAL</b>	<b>38.96</b>	<b>39.43</b>	<b>37.00</b>	<b>35.60</b>	<b>43.50</b>	<b>48.44</b>	<b>52.25</b>	<b>53.08</b>	<b>48.82</b>	<b>50.06</b>	<b>43.95</b>	<b>41.83</b>	<b>532.93</b>	
	AWTP	0.00	0.00	0.00	0.00	0.00	0.00	0.00	0.00	0.00	0.00	0.00	0.00	0.00	
<b>2019</b>	S.S.	34.49	23.50	24.82	33.30	35.07	36.17	41.98	39.45	36.02	37.32	33.64	26.26	402.00	<b>2019</b>
	S.R.	3.25	9.73	13.89	8.50	7.75	10.16	10.80	10.45	11.12	11.42	11.15	13.78	122.00	
	<b>SS &amp; SR TOTAL</b>	<b>37.74</b>	<b>33.23</b>	<b>38.71</b>	<b>41.80</b>	<b>42.81</b>	<b>46.33</b>	<b>52.78</b>	<b>49.91</b>	<b>47.13</b>	<b>48.74</b>	<b>44.78</b>	<b>40.05</b>	<b>524.00</b>	
	AWTP	0.00	0.00	0.00	0.00	0.00	0.00	0.00	0.00	0.00	0.00	0.00	0.00	0.00	
<b>2018</b>	S.S.	14.65	15.73	24.97	32.09	38.50	38.30	32.13	21.54	17.99	12.97	12.65	30.43	291.97	<b>2018</b>
	S.R.	30.09	23.61	13.23	6.96	5.02	7.89	22.00	30.88	27.67	31.81	30.59	10.11	239.85	
	<b>SS &amp; SR TOTAL</b>	<b>44.74</b>	<b>39.34</b>	<b>38.20</b>	<b>39.05</b>	<b>43.52</b>	<b>46.19</b>	<b>54.13</b>	<b>52.42</b>	<b>45.67</b>	<b>44.78</b>	<b>43.24</b>	<b>40.54</b>	<b>531.82</b>	
	AWTP	0.00	0.00	0.00	0.00	0.00	0.00	0.00	0.00	0.00	0.00	0.00	0.00	0.00	
<b>2017</b>	S.S.	31.85	18.62	40.94	45.34	46.26	34.05	22.86	16.93	23.78	26.18	20.90	22.54	350.25	<b>2017</b>
	S.R.	6.97	14.54	6.02	9.89	18.14	28.49	32.63	32.27	16.96	12.25	20.29	21.27	219.72	
	<b>SS &amp; SR TOTAL</b>	<b>38.82</b>	<b>33.17</b>	<b>46.95</b>	<b>55.23</b>	<b>64.40</b>	<b>62.55</b>	<b>55.49</b>	<b>49.20</b>	<b>40.74</b>	<b>38.43</b>	<b>41.19</b>	<b>43.81</b>	<b>569.97</b>	
	AWTP	0.00	0.00	0.00	0.00	0.00	0.00	0.00	0.00	0.00	0.00	0.00	0.00	0.00	
<b>2016</b>	S.S.	16.21	8.82	19.61	21.27	24.30	28.06	28.37	26.49	26.02	6.49	5.66	21.53	232.83	<b>2016</b>
	S.R.	18.10	27.70	16.92	15.76	15.92	13.96	20.53	18.31	16.92	34.50	31.75	18.46	248.83	
	<b>SS &amp; SR TOTAL</b>	<b>34.31</b>	<b>36.53</b>	<b>36.52</b>	<b>37.03</b>	<b>40.21</b>	<b>42.02</b>	<b>48.90</b>	<b>44.80</b>	<b>42.94</b>	<b>40.99</b>	<b>37.42</b>	<b>39.98</b>	<b>481.66</b>	
	AWTP	0.00	0.00	0.00	0.00	0.00	0.00	0.00	0.00	0.00	10.33	7.04	5.70	23.07	
<b>2015</b>	S.S.	19.95	16.65	17.16	17.79	16.18	14.14	15.14	17.39	20.36	26.17	23.74	21.23	225.89	<b>2015</b>
	S.R.	14.77	14.90	20.53	20.68	20.99	26.51	29.51	27.78	21.94	16.05	13.57	13.90	241.13	
	<b>SS &amp; SR TOTAL</b>	<b>34.72</b>	<b>31.55</b>	<b>37.69</b>	<b>38.47</b>	<b>37.17</b>	<b>40.65</b>	<b>44.65</b>	<b>45.17</b>	<b>42.30</b>	<b>42.22</b>	<b>37.31</b>	<b>35.13</b>	<b>467.02</b>	
	AWTP	5.55	14.34	12.49	7.61	0.00	0.00	0.00	0.00	3.68	8.07	6.29	10.89	68.92	
<b>2014</b>	S.S.	22.93	16.97	24.90	25.03	19.39	14.40	11.94	0.00	0.76	24.32	13.74	23.81	198.17	<b>2014</b>
	S.R.	34.69	19.85	10.00	10.44	18.88	24.19	30.89	43.09	36.26	12.06	18.63	9.62	268.59	
	<b>SS &amp; SR TOTAL</b>	<b>57.62</b>	<b>36.82</b>	<b>34.90</b>	<b>35.47</b>	<b>38.27</b>	<b>38.59</b>	<b>42.82</b>	<b>43.09</b>	<b>37.01</b>	<b>36.37</b>	<b>32.36</b>	<b>33.44</b>	<b>466.76</b>	
	AWTP														
<b>2013</b>	S.S.	50.55	47.40	54.72	55.27	63.18	46.01	60.82	72.32	57.73	29.84	26.72	28.61	593.16	<b>2013</b>
	S.R.	0.00	0.00	0.00	4.27	5.28	27.57	18.12	3.50	7.62	22.56	25.38	25.61	139.91	
	<b>SS &amp; SR TOTAL</b>	<b>50.55</b>	<b>47.40</b>	<b>54.72</b>	<b>59.54</b>	<b>68.45</b>	<b>73.58</b>	<b>78.94</b>	<b>75.82</b>	<b>65.35</b>	<b>52.40</b>	<b>52.11</b>	<b>54.22</b>	<b>733.07</b>	
	AWTP														
<b>2012</b>	S.S.	50.12	48.09	52.60	50.52	60.06	56.53	48.17	41.12	36.72	42.22	48.70	50.88	585.73	<b>2012</b>
	S.R.	3.54	0.79	0.00	0.66	1.44	11.14	27.95	33.22	29.98	21.43	8.86	0.00	139.01	
	<b>SS &amp; SR TOTAL</b>	<b>53.66</b>	<b>48.88</b>	<b>52.60</b>	<b>51.18</b>	<b>61.50</b>	<b>67.67</b>	<b>76.12</b>	<b>74.34</b>	<b>66.70</b>	<b>63.65</b>	<b>57.56</b>	<b>50.88</b>	<b>724.74</b>	
	AWTP														
<b>011</b>	S.S.	48.05	43.36	45.17	52.11	53.94	49.27	60.52	55.52	45.40	45.67	46.28	51.87	597.16	<b>011</b>
	S.R.	0.00	0.70	0.00	0.76	6.65	11.03	12.97	14.82	19.45	14.15	5.19	0.00	85.72	

**2023**  
**CAMBRIA COMMUNITY SERVICES DISTRICT**  
**NET WATER DIVERSION, BY SOURCE**  
**REPORTED IN ACRE-FEET**

YEAR	SOURCE	JAN	FEB	MAR	APR	MAY	JUN	JUL	AUG	SEP	OCT	NOV	DEC	ANNUAL TOTAL	YEAR
<b>2020</b>	<b>SS &amp; SR TOTAL</b>	<b>48.05</b>	<b>44.06</b>	<b>45.17</b>	<b>52.87</b>	<b>60.59</b>	<b>60.30</b>	<b>73.49</b>	<b>70.34</b>	<b>64.85</b>	<b>59.82</b>	<b>51.47</b>	<b>51.87</b>	<b>682.88</b>	<b>20</b>
	S.S.	45.44	40.48	47.48	48.39	56.26	55.29	50.73	44.58	35.05	37.61	36.14	36.45	533.90	
<b>2010</b>	S.R.	0.00	0.00	0.77	0.62	0.68	8.74	21.96	27.30	32.52	21.71	14.48	9.73	138.51	<b>2010</b>
	<b>SS &amp; SR TOTAL</b>	<b>45.44</b>	<b>40.48</b>	<b>48.25</b>	<b>49.01</b>	<b>56.94</b>	<b>64.03</b>	<b>72.69</b>	<b>71.88</b>	<b>67.57</b>	<b>59.32</b>	<b>50.62</b>	<b>46.18</b>	<b>672.41</b>	
<b>2009</b>	S.S.	28.17	37.57	50.95	58.52	48.56	37.47	48.80	40.69	31.99	44.62	53.05	46.55	526.94	<b>2009</b>
	S.R.	24.83	3.81	0.00	0.00	13.53	26.06	25.21	34.10	32.64	11.02	0.00	1.34	172.54	
<b>2008</b>	<b>SS &amp; SR TOTAL</b>	<b>53.00</b>	<b>41.38</b>	<b>50.95</b>	<b>58.52</b>	<b>62.09</b>	<b>63.53</b>	<b>74.01</b>	<b>74.79</b>	<b>64.63</b>	<b>55.64</b>	<b>53.05</b>	<b>47.89</b>	<b>699.48</b>	<b>2008</b>
	S.S.	43.35	45.35	51.55	52.59	40.45	33.03	40.15	47.57	47.24	41.53	21.47	25.41	489.69	
<b>2007</b>	S.R.	2.33	0.67	0.71	2.20	24.69	33.55	32.94	24.87	18.26	21.03	32.21	24.46	217.92	<b>2007</b>
	<b>SS &amp; SR TOTAL</b>	<b>45.68</b>	<b>46.02</b>	<b>52.26</b>	<b>54.79</b>	<b>65.14</b>	<b>66.58</b>	<b>73.09</b>	<b>72.44</b>	<b>65.50</b>	<b>62.56</b>	<b>53.68</b>	<b>49.87</b>	<b>707.61</b>	
<b>2006</b>	S.S.	57.70	47.45	56.47	60.50	56.11	51.21	55.95	63.48	58.72	37.58	34.83	38.61	618.61	<b>2006</b>
	S.R.	0.00	0.00	0.60	1.81	14.47	22.24	23.47	12.37	5.29	18.70	21.20	9.42	129.57	
<b>2005</b>	<b>SS &amp; SR TOTAL</b>	<b>57.70</b>	<b>47.45</b>	<b>57.07</b>	<b>62.31</b>	<b>70.58</b>	<b>73.45</b>	<b>79.42</b>	<b>75.85</b>	<b>64.01</b>	<b>56.28</b>	<b>56.03</b>	<b>48.03</b>	<b>748.18</b>	<b>2005</b>
	S.S.	50.81	49.10	48.82	49.65	60.58	65.65	56.12	59.67	52.49	42.86	34.46	42.75	612.96	
<b>2004</b>	S.R.	0.00	0.78	0.00	0.62	0.74	2.56	23.58	20.72	20.17	23.88	26.46	13.63	133.14	<b>2004</b>
	<b>SS &amp; SR TOTAL</b>	<b>50.81</b>	<b>49.88</b>	<b>48.82</b>	<b>50.27</b>	<b>61.32</b>	<b>68.21</b>	<b>79.70</b>	<b>80.39</b>	<b>72.66</b>	<b>66.74</b>	<b>60.92</b>	<b>56.38</b>	<b>746.10</b>	
<b>2003</b>	S.S.	50.05	46.16	51.09	55.01	65.70	68.81	80.52	61.60	48.71	47.08	40.83	36.70	652.26	<b>2003</b>
	S.R.	0.00	0.62	0.93	0.76	0.76	0.73	1.64	17.32	20.25	21.69	16.92	7.36	88.98	
<b>2002</b>	<b>SS &amp; SR TOTAL</b>	<b>50.05</b>	<b>46.78</b>	<b>52.02</b>	<b>55.77</b>	<b>66.46</b>	<b>69.54</b>	<b>82.16</b>	<b>78.92</b>	<b>68.96</b>	<b>68.77</b>	<b>57.75</b>	<b>44.06</b>	<b>741.24</b>	<b>2002</b>
	S.S.	55.83	51.40	58.56	64.33	67.98	52.62	47.04	39.68	41.06	34.80	49.30	49.92	612.52	
<b>2001</b>	S.R.	0.00	0.61	1.17	4.84	8.68	22.08	30.80	36.30	27.32	24.95	1.73	1.63	160.11	<b>2001</b>
	<b>SS &amp; SR TOTAL</b>	<b>55.83</b>	<b>52.01</b>	<b>59.73</b>	<b>69.17</b>	<b>76.66</b>	<b>74.70</b>	<b>77.84</b>	<b>75.98</b>	<b>68.38</b>	<b>59.75</b>	<b>51.03</b>	<b>51.55</b>	<b>772.63</b>	
<b>2000</b>	S.S.	52.73	49.97	57.35	58.32	62.82	68.22	65.05	63.34	58.91	67.08	56.20	48.84	708.83	<b>2000</b>
	S.R.	0.70	1.11	0.48	0.94	1.84	5.63	19.77	22.04	16.00	6.58	3.12	5.84	84.05	
<b>1999</b>	<b>SS &amp; SR TOTAL</b>	<b>53.43</b>	<b>51.08</b>	<b>57.83</b>	<b>59.26</b>	<b>64.66</b>	<b>73.85</b>	<b>84.82</b>	<b>85.38</b>	<b>74.91</b>	<b>73.66</b>	<b>59.32</b>	<b>54.68</b>	<b>792.88</b>	<b>1999</b>
	S.S.	54.43	52.23	60.70	65.43	60.75	55.13	66.79	73.35	66.59	62.03	56.36	53.98	727.77	
<b>1998</b>	S.R.	1.28	1.27	1.10	1.11	14.82	22.79	19.54	9.67	3.52	4.02	2.04	0.55	81.71	<b>1998</b>
	<b>SS &amp; SR TOTAL</b>	<b>55.71</b>	<b>53.50</b>	<b>61.80</b>	<b>66.54</b>	<b>75.57</b>	<b>77.92</b>	<b>86.33</b>	<b>83.02</b>	<b>70.11</b>	<b>66.05</b>	<b>58.40</b>	<b>54.53</b>	<b>809.48</b>	
<b>1997</b>	S.S.	56.16	48.05	55.92	60.69	73.30	77.51	85.01	78.50	53.45	56.21	48.16	52.29	745.25	<b>1997</b>
	S.R.	0.00	0.00	0.00	0.00	0.00	0.00	0.00	5.78	21.08	16.87	8.06	0.89	52.68	
<b>1996</b>	<b>SS &amp; SR TOTAL</b>	<b>56.16</b>	<b>48.05</b>	<b>55.92</b>	<b>60.69</b>	<b>73.30</b>	<b>77.51</b>	<b>85.01</b>	<b>84.28</b>	<b>74.53</b>	<b>73.08</b>	<b>56.22</b>	<b>53.18</b>	<b>797.93</b>	<b>1996</b>
	S.S.	56.41	50.43	55.27	65.40	70.84	73.60	85.00	84.68	73.30	65.60	58.49	59.80	798.82	
<b>1995</b>	S.R.	0.00	0.00	0.00	0.00	0.00	0.00	0.00	0.00	0.00	0.00	0.00	0.00	0.00	<b>1995</b>
	<b>SS &amp; SR TOTAL</b>	<b>56.41</b>	<b>50.43</b>	<b>55.27</b>	<b>65.40</b>	<b>70.84</b>	<b>73.60</b>	<b>85.00</b>	<b>84.68</b>	<b>73.30</b>	<b>65.60</b>	<b>58.49</b>	<b>59.80</b>	<b>798.82</b>	
<b>1994</b>	S.S.	56.40	45.26	52.16	57.40	70.43	71.35	85.41	82.68	69.45	68.04	57.78	57.69	774.05	<b>1994</b>
	S.R.	0.01	0.01	0.01	0.04	0.02	0.07	0.01	0.02	0.32	0.02	0.00	0.00	0.53	
<b>1993</b>	<b>SS &amp; SR TOTAL</b>	<b>56.41</b>	<b>45.27</b>	<b>52.17</b>	<b>57.44</b>	<b>70.45</b>	<b>71.42</b>	<b>85.42</b>	<b>82.70</b>	<b>69.77</b>	<b>68.06</b>	<b>57.78</b>	<b>57.69</b>	<b>774.58</b>	<b>1993</b>
	S.S.	44.39	46.36	47.00	50.53	56.43	63.43	77.75	80.30	68.35	66.58	54.06	52.13	707.31	
<b>1992</b>	S.R.	0.01	0.01	0.01	0.01	0.00	0.01	0.01	0.09	0.01	0.00	0.00	0.00	0.16	<b>1992</b>
	<b>SS &amp; SR TOTAL</b>	<b>44.40</b>	<b>46.37</b>	<b>47.01</b>	<b>50.54</b>	<b>56.43</b>	<b>63.44</b>	<b>77.76</b>	<b>80.39</b>	<b>68.36</b>	<b>66.58</b>	<b>54.06</b>	<b>52.13</b>	<b>707.47</b>	
<b>1991</b>	S.S.	50.61	49.20	65.66	68.65	76.18	79.14	82.31	57.02	37.32	27.50	38.96	45.96	678.51	<b>1991</b>
	S.R.	0.02	0.08	0.02	0.02	0.02	0.02	0.38	25.92	31.54	36.85	12.41	0.01	107.29	
<b>1990</b>	<b>SS &amp; SR TOTAL</b>	<b>50.63</b>	<b>49.28</b>	<b>65.68</b>	<b>68.67</b>	<b>76.20</b>	<b>79.16</b>	<b>82.69</b>	<b>82.94</b>	<b>68.86</b>	<b>64.35</b>	<b>51.37</b>	<b>45.97</b>	<b>785.80</b>	<b>1990</b>
	S.S.	46.66	43.40	47.39	56.95	66.18	70.83	75.70	77.27	68.23	65.58	50.37	49.43	717.99	
<b>1989</b>	S.R.	0.01	0.03	0.03	0.03	0.03	0.01	0.03	0.02	0.01	0.02	0.02	0.02	0.26	<b>1989</b>
	<b>SS &amp; SR TOTAL</b>	<b>46.67</b>	<b>43.43</b>	<b>47.42</b>	<b>56.98</b>	<b>66.21</b>	<b>70.84</b>	<b>75.73</b>	<b>77.29</b>	<b>68.24</b>	<b>65.60</b>	<b>50.39</b>	<b>49.45</b>	<b>718.25</b>	

**2023**  
**CAMBRIA COMMUNITY SERVICES DISTRICT**  
**NET WATER DIVERSION, BY SOURCE**  
**REPORTED IN ACRE-FEET**

YEAR	SOURCE	JAN	FEB	MAR	APR	MAY	JUN	JUL	AUG	SEP	OCT	NOV	DEC	ANNUAL TOTAL	YEAR
<b>1995</b>	S.S.	41.30	41.10	47.10	52.14	53.50	59.00	74.70	74.10	65.40	64.70	55.30	47.60	675.94	<b>1995</b>
	S.R.	1.90	0.00	0.00	0.00	0.00	0.00	0.00	0.00	0.00	0.00	0.00	0.00	1.90	
	<b>SS &amp; SR TOTAL</b>	<b>43.20</b>	<b>41.10</b>	<b>47.10</b>	<b>52.14</b>	<b>53.50</b>	<b>59.00</b>	<b>74.70</b>	<b>74.10</b>	<b>65.40</b>	<b>64.70</b>	<b>55.30</b>	<b>47.60</b>	<b>677.84</b>	
<b>1994</b>	S.S.	47.00	38.60	48.60	52.00	54.60	63.40	69.30	47.80	31.70	30.80	28.20	26.00	538.00	<b>1994</b>
	S.R.	0.00	0.00	0.00	0.00	0.10	0.00	0.00	25.00	30.20	27.70	21.20	19.90	124.10	
	<b>SS &amp; SR TOTAL</b>	<b>47.00</b>	<b>38.60</b>	<b>48.60</b>	<b>52.00</b>	<b>54.70</b>	<b>63.40</b>	<b>69.30</b>	<b>72.80</b>	<b>61.90</b>	<b>58.50</b>	<b>49.40</b>	<b>45.90</b>	<b>662.10</b>	
<b>1993</b>	S.S.	50.10	45.70	52.60	56.30	68.30	68.80	68.10	69.80	59.80	56.10	51.40	43.50	690.50	<b>1993</b>
	S.R.	0.50	0.30	0.00	0.00	0.10	0.00	0.00	0.00	0.00	0.00	0.00	0.00	0.90	
	<b>SS &amp; SR TOTAL</b>	<b>50.60</b>	<b>46.00</b>	<b>52.60</b>	<b>56.30</b>	<b>68.40</b>	<b>68.80</b>	<b>68.10</b>	<b>69.80</b>	<b>59.80</b>	<b>56.10</b>	<b>51.40</b>	<b>43.50</b>	<b>691.40</b>	
<b>1992</b>	S.S.	45.30	42.20	45.90	55.20	64.00	58.10	44.90	41.80	35.00	32.80	34.00	43.10	542.30	<b>1992</b>
	S.R.	0.80	0.30	0.10	0.40	0.50	6.10	22.70	28.10	26.30	25.10	19.50	5.50	135.40	
	<b>SS &amp; SR TOTAL</b>	<b>46.10</b>	<b>42.50</b>	<b>46.00</b>	<b>55.60</b>	<b>64.50</b>	<b>64.20</b>	<b>67.60</b>	<b>69.90</b>	<b>61.30</b>	<b>57.90</b>	<b>53.50</b>	<b>48.60</b>	<b>677.70</b>	
<b>1991</b>	S.S.	26.90	23.10	32.70	39.60	48.60	44.10	40.10	34.80	30.50	28.00	26.40	30.10	404.90	<b>1991</b>
	S.R.	15.30	13.10	0.50	0.10	0.10	5.50	15.00	21.60	20.20	21.00	19.70	18.70	150.80	
	<b>SS &amp; SR TOTAL</b>	<b>42.20</b>	<b>36.20</b>	<b>33.20</b>	<b>39.70</b>	<b>48.70</b>	<b>49.60</b>	<b>55.10</b>	<b>56.40</b>	<b>50.70</b>	<b>49.00</b>	<b>46.10</b>	<b>48.80</b>	<b>555.70</b>	
<b>1990</b>	S.S.	45.70	47.00	55.28	44.75	31.46	32.34	40.00	38.00	31.91	31.40	29.40	29.90	457.14	<b>1990</b>
	S.R.	8.70	0.80	0.50	18.03	32.30	26.79	22.30	22.20	20.64	20.20	19.30	14.90	206.66	
	<b>SS &amp; SR TOTAL</b>	<b>54.40</b>	<b>47.80</b>	<b>55.78</b>	<b>62.78</b>	<b>63.76</b>	<b>59.13</b>	<b>62.30</b>	<b>60.20</b>	<b>52.55</b>	<b>51.60</b>	<b>48.70</b>	<b>44.80</b>	<b>663.80</b>	
<b>1989</b>	S.S.	51.00	47.90	53.90	61.90	57.20	62.20	69.20	60.90	36.30	38.70	42.60	40.60	622.40	<b>1989</b>
	S.R.	0.00	0.00	0.00	1.00	13.80	13.50	17.90	28.00	42.00	22.60	17.60	18.20	174.60	
	<b>SS &amp; SR TOTAL</b>	<b>51.00</b>	<b>47.90</b>	<b>53.90</b>	<b>62.90</b>	<b>71.00</b>	<b>75.70</b>	<b>87.10</b>	<b>88.90</b>	<b>78.30</b>	<b>61.30</b>	<b>60.20</b>	<b>58.80</b>	<b>797.00</b>	
<b>1988</b>	S.S.	51.20	57.90	63.20	47.30	57.40	44.20	50.00	51.70	41.90	37.40	27.40	36.00	565.60	<b>1988</b>
	S.R.	0.00	0.00	0.00	16.30	15.70	30.70	31.20	34.90	36.00	34.90	35.20	19.00	253.90	
	<b>SS &amp; SR TOTAL</b>	<b>51.20</b>	<b>57.90</b>	<b>63.20</b>	<b>63.60</b>	<b>73.10</b>	<b>74.90</b>	<b>81.20</b>	<b>86.60</b>	<b>77.90</b>	<b>72.30</b>	<b>62.60</b>	<b>55.00</b>	<b>819.50</b>	
<b>1987</b>	S.S.	41.51	41.30	48.40	63.00	68.80	63.80	66.10	62.90	49.90	36.40	32.90	42.30	617.31	<b>1987</b>
	S.R.	10.20	3.80	0.00	0.00	2.00	13.80	22.40	26.00	28.80	35.60	19.30	6.59	168.49	
	<b>SS &amp; SR TOTAL</b>	<b>51.71</b>	<b>45.10</b>	<b>48.40</b>	<b>63.00</b>	<b>70.80</b>	<b>77.60</b>	<b>88.50</b>	<b>88.90</b>	<b>78.70</b>	<b>72.00</b>	<b>52.20</b>	<b>48.89</b>	<b>785.80</b>	

*Net diversion totals reported 2016 to current. Previous years are gross totals and may include water volumes also reported under riparian statements.*