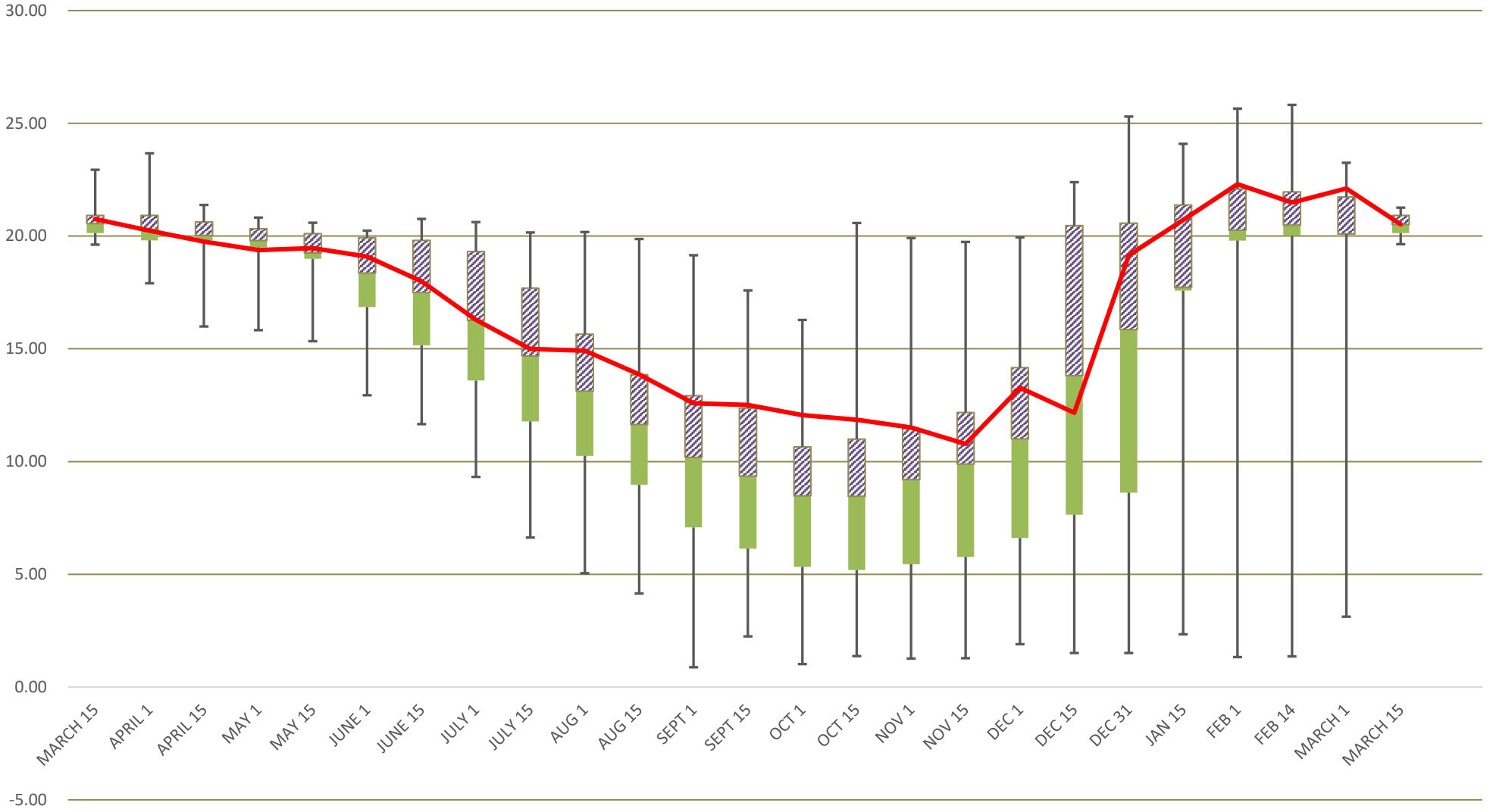
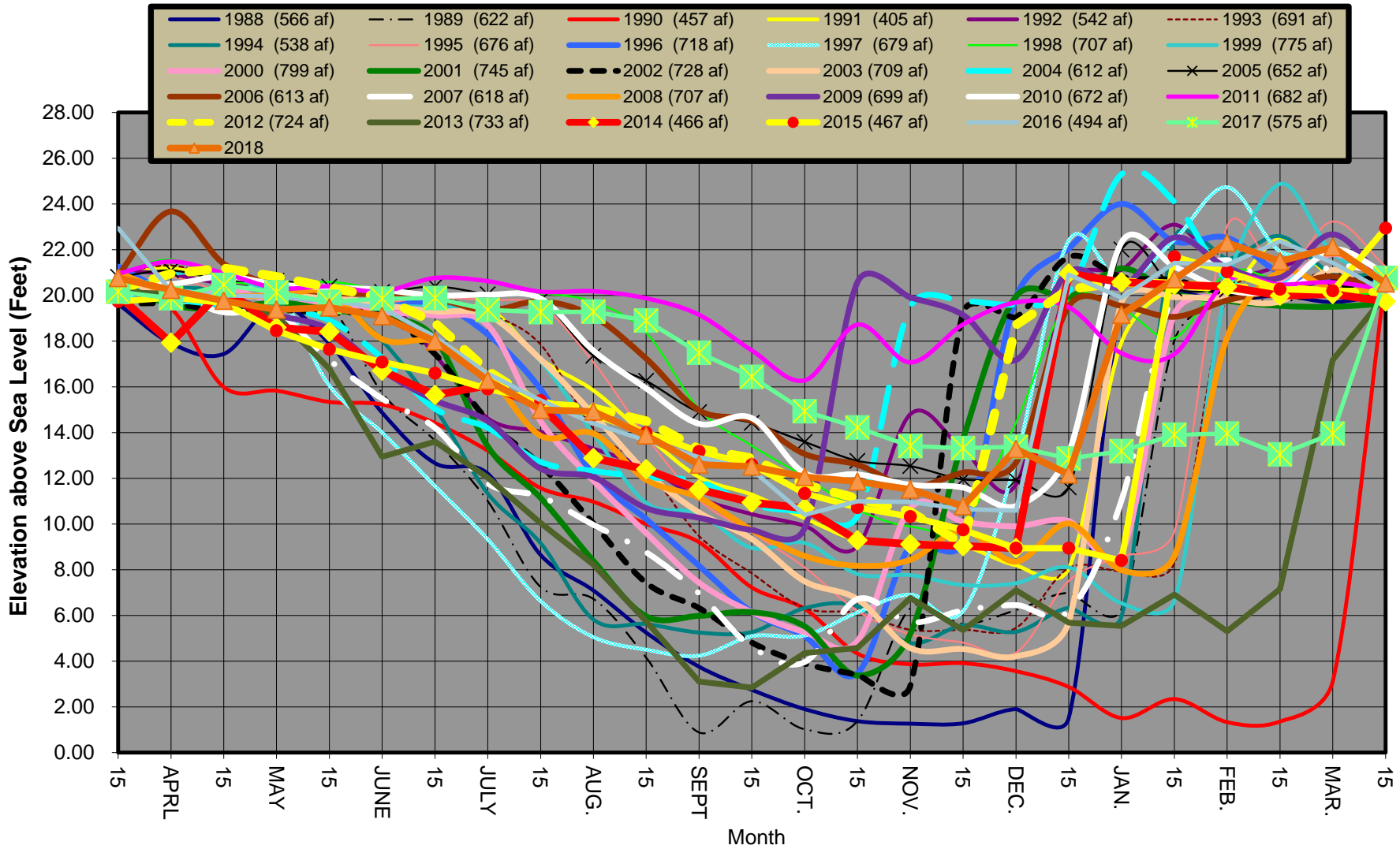


1988 to Current Statistical San Simeon Well Level Summary by Month
showing Minimums, Maximums, 25 % Percentile, 75% Percentile
Average Level is the line between the Purple (hatched) and Green (solid) bars

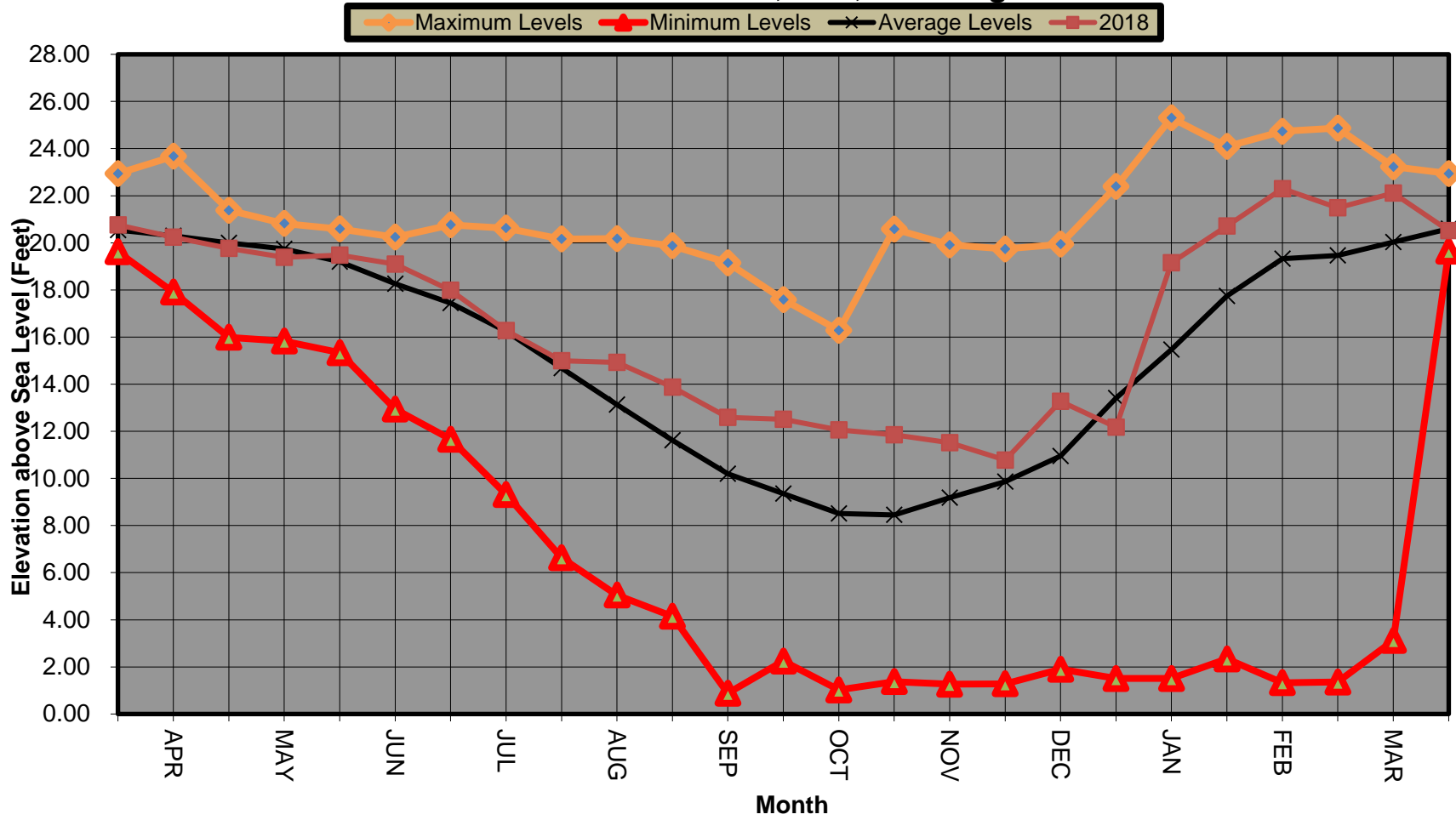


25th Percentile 75th Percentile 2018 reads

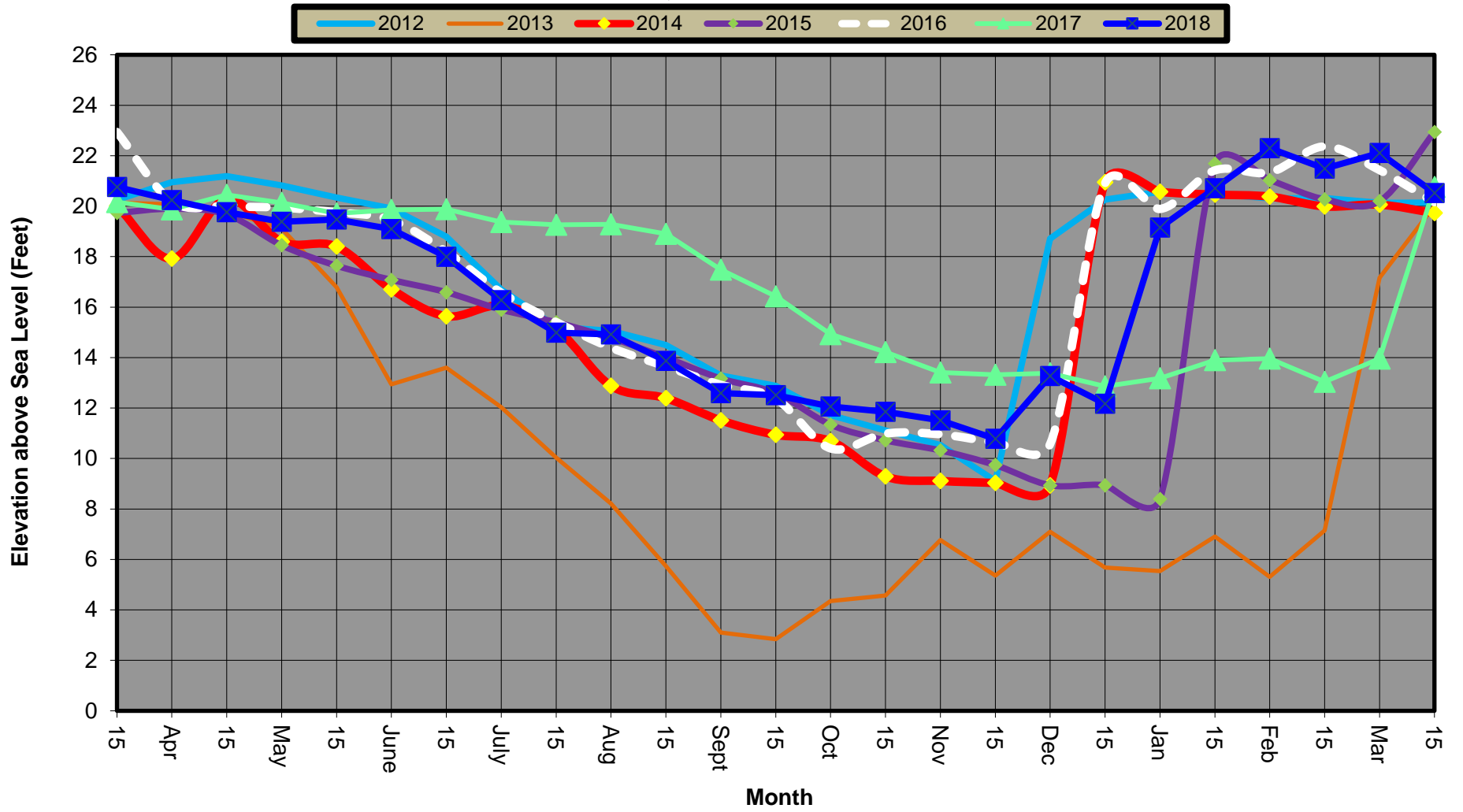
San Simeon Creek Well Levels 1988 - Current



San Simeon Creek Well Levels Mid-March 2018/2019 levels to date and 1988 to Current Min, Max, & Average

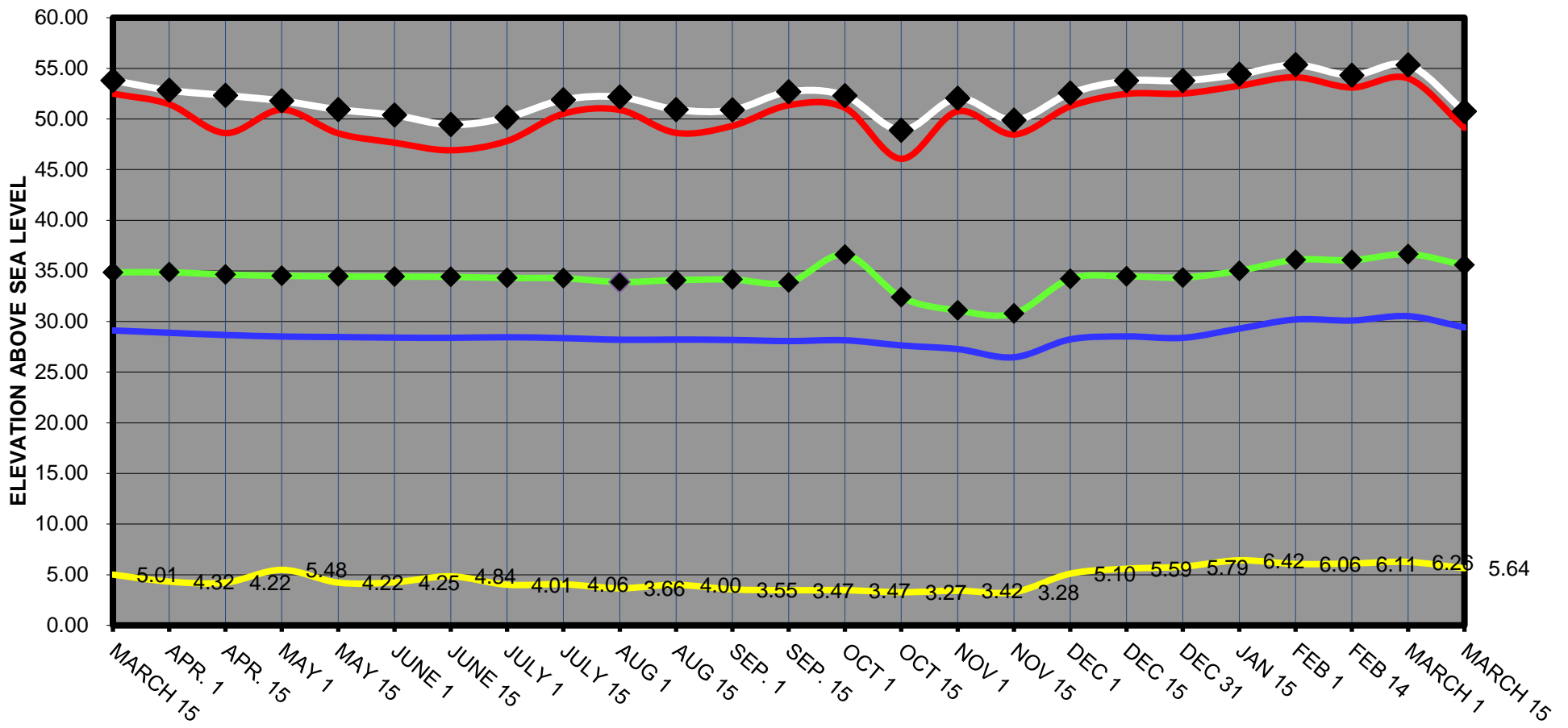
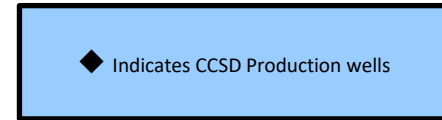


San Simeon Creek Well Levels Last 7 years March, 2011 - Current



SANTA ROSA CREEK WELL LEVELS

March 15th, 2018 - Current



3/18/2019

CAMBRIA COMMUNITY SERVICES DISTRICT
WELL WATER LEVELS FOR 3/18/2019

Well Code	Distance Ref. Point to Water Level	Reference Point Distance Above Sea Level	Depth of Water to Sea Level	Remarks
SANTA ROSA CREEK WELLS				
23R	34.29	83.42	49.13	
SR4	31.26	82.00	50.74	
SR3	18.72	54.30	35.58	
SR1	16.98	46.40	29.42	
RP#1		46.25		Not Read
RP#2		33.11		Not Read
21R3	7.74	12.88	5.14	41768
WBE	11.23	16.87	5.64	
WBW		17.02		Not Read

AVERAGE LEVEL OF CCSD SANTA ROSA WELLS SR1 & SR3 = 32.50 FEET
CCSD SANTA ROSA WELL SR4 = 50.74 FEET

SAN SIMEON CREEK WELLS				
16D1	5.66	11.36	5.70	
MW4	10.10	15.95	5.85	
MW1		42.11		Not Read
MW2		38.10		Not Read
MW3		49.56		Not Read
9M1		65.63		Not Read
9P2	9.48	19.11	9.63	
9P7		20.69		Not Read
9L1	14.51	27.33	12.82	
RIW		25.41		Not Read
SS4	13.28	25.92	12.64	SS4 to 9P2 Gradient = + 3.01
MIW		29.89		Not Read
SS3	13.59	33.73	20.14	
SS2	12.22	33.16	20.94	
SS1	11.89	32.37	20.48	
11B1		105.43		Not Read
11C1	13.81	98.20	84.39	
PFNW		93.22		Not Read
10A1		78.18		Not Read
10G2		62.95		Not Read
10G1		59.55		Not Read
10F2		66.92		Not Read
10M2	22.30	55.21	32.91	
9J3		43.45		Not Read
lagoon	17.11			mitigation erosion none

AVERAGE LEVEL OF CCSD SAN SIMEON WELLS SS1,SS2 & SS 20.52 FEET

revised 6/6/16

Red Font are the CCSD's Production Wells, as measured on 3/18/2019

reference point on 16d1,miw1,miw2,miw3,9p7,riw,miw1,ss1,ss2 and ss3 updat 2/17/2015

3/4/2019

CAMBRIA COMMUNITY SERVICES DISTRICT
WELL WATER LEVELS FOR 3/4/2019

Well Code	Distance Ref. Point to Water Level	Reference Point Distance Above Sea Level	Depth of Water to Sea Level	Remarks
SANTA ROSA CREEK WELLS				
23R	29.41	83.42	54.01	
SR4	26.67	82.00	55.33	
SR3	17.65	54.30	36.65	
SR1	15.87	46.40	30.53	
RP#1		46.25		Not Read
RP#2		33.11		Not Read
21R3	7.05	12.88	5.83	41767
WBE	10.61	16.87	6.26	
WBW	11.01	17.02	6.01	

AVERAGE LEVEL OF CCSD SANTA ROSA WELLS SR1 & SR3 = 33.59 FEET
CCSD SANTA ROSA WELL SR4 = 55.33 FEET

SAN SIMEON CREEK WELLS

16D1	6.30	11.36	5.06	
MW4	10.13	15.95	5.82	
MW1	7.05	42.11	35.06	
MW2	9.40	38.10	28.70	
MW3	12.17	49.56	37.39	
9M1	17.51	65.63	48.12	
9P2	7.83	19.11	11.28	
9P7	8.64	20.69	12.05	
9L1	12.57	27.33	14.76	
RIW	8.47	25.41	16.94	
SS4	11.58	25.92	14.34	SS4 to 9P2 Gradient = + 3.06
MIW	8.92	29.89	20.97	
SS3	11.78	33.73	21.95	
SS2	10.70	33.16	22.46	
SS1	10.46	32.37	21.91	
11B1	16.94	105.43	88.49	
11C1	11.90	98.20	86.30	
PFNW	11.16	93.22	82.06	
10A1	22.12	78.18	56.06	
10G2	17.35	62.95	45.60	
10G1	15.61	59.55	43.94	
10F2	23.43	66.92	43.49	
10M2	21.15	55.21	34.06	
9J3	13.66	43.45	29.79	
lagoon	19.54			mitigation erosion none

AVERAGE LEVEL OF CCSD SAN SIMEON WELLS SS1,SS2 & SS 22.11 FEET

revised 6/6/16

Red Font are the CCSD's Production Wells, as measured on 3/4/2019

reference point on 16d1,miw1,miw2,miw3,9p7,riw,miw1,ss1,ss2 and ss3 updat 2/17/2015

2/19/2019

CAMBRIA COMMUNITY SERVICES DISTRICT
WELL WATER LEVELS FOR 2/19/2019

Well Code	Distance Ref. Point to Water Level	Reference Point Distance Above Sea Level	Depth of Water to Sea Level	Remarks
SANTA ROSA CREEK WELLS				
23R	30.31	83.42	53.11	
SR4	27.69	82.00	54.31	
SR3	18.24	54.30	36.06	
SR1	16.30	46.40	30.10	
RP#1		46.25		Not Read
RP#2		33.11		Not Read
21R3	7.19	12.88	5.69	41767
WBE	10.76	16.87	6.11	
WBW		17.02		Not Read
AVERAGE LEVEL OF CCSD SANTA ROSA WELLS SR1 & SR3 =				33.08 FEET
CCSD SANTA ROSA WELL SR4 =				54.31 FEET

SAN SIMEON CREEK WELLS				
16D1	6.52	11.36	4.84	
MW4	10.50	15.95	5.45	
MW1		42.11		Not Read
MW2		38.10		Not Read
MW3		49.56		Not Read
9M1		65.63		Not Read
9P2	8.44	19.11	10.67	
9P7		20.69		Not Read
9L1		27.33		Not Read
RIW		25.41		Not Read
SS4	12.41	25.92	13.51	SS4 to 9P2 Gradient = + 2.84
MIW		29.89		Not Read
SS3	12.48	33.73	21.25	
SS2	11.31	33.16	21.85	
SS1	11.00	32.37	21.37	
11B1		105.43		Not Read
11C1	12.62	98.20	85.58	
PFNW		93.22		Not Read
10A1		78.18		Not Read
10G2		62.95		Not Read
10G1		59.55		Not Read
10F2		66.92		Not Read
10M2	21.72	55.21	33.49	
9J3		43.45		Not Read
lagoon	19.31			mitigation erosion none
AVERAGE LEVEL OF CCSD SAN SIMEON WELLS SS1,SS2 & SS				21.49 FEET

revised 6/6/16

Red Font are the CCSD's Production Wells, as measured on 2/19/2019

reference point on 16d1,miw1,miw2,miw3,9p7,riw,miw1,ss1,ss2 and ss3 updat 2/17/2015

2/6/2019

CAMBRIA COMMUNITY SERVICES DISTRICT
WELL WATER LEVELS FOR 2/6/2019

Well Code	Distance Ref. Point to Water Level	Reference Point Distance Above Sea Level	Depth of Water to Sea Level	Remarks
SANTA ROSA CREEK WELLS				
23R	29.30	83.42	54.12	
SR4	26.66	82.00	55.34	
SR3	18.20	54.30	36.10	
SR1	16.20	46.40	30.20	
RP#1		46.25		Not Read
RP#2		33.11		Not Read
21R3	7.19	12.88	5.69	41767
WBE	10.81	16.87	6.06	
WBW	11.35	17.02	5.67	

AVERAGE LEVEL OF CCSD SANTA ROSA WELLS SR1 & SR3 = 33.15 FEET
CCSD SANTA ROSA WELL SR4 = 55.34 FEET

SAN SIMEON CREEK WELLS

16D1	5.87	11.36	5.49	
MW4	9.78	15.95	6.17	
MW1	9.78	42.11	32.33	
MW2	9.66	38.10	28.44	
MW3	14.85	49.56	34.71	
9M1	22.25	65.63	43.38	
9P2	7.55	19.11	11.56	
9P7	8.02	20.69	12.67	
9L1	12.54	27.33	14.79	
RIW	8.32	25.41	17.09	
SS4	11.71	25.92	14.21	SS4 to 9P2 Gradient = + 2.65
MIW	8.61	29.89	21.28	
SS3	11.49	33.73	22.24	
SS2	10.52	33.16	22.64	
SS1	10.35	32.37	22.02	
11B1	17.10	105.43	88.33	
11C1	12.07	98.20	86.13	
PFNW	11.34	93.22	81.88	
10A1	20.92	78.18	57.26	
10G2	17.62	62.95	45.33	
10G1	15.97	59.55	43.58	
10F2	23.82	66.92	43.10	
10M2	20.67	55.21	34.54	
9J3	13.90	43.45	29.55	
lagoon	18.67			mitigation erosion none

AVERAGE LEVEL OF CCSD SAN SIMEON WELLS SS1,SS2 & SS 22.30 FEET

revised 6/6/16

Red Font are the CCSD's Production Wells, as measured on 2/6/2019

reference point on 16d1,miw1,miw2,miw3,9p7,riw,miw1,ss1,ss2 and ss3 updat 2/17/2015

1/14/2019

CAMBRIA COMMUNITY SERVICES DISTRICT
WELL WATER LEVELS FOR 1/14/2019

Well Code	Distance Ref. Point to Water Level	Reference Point Distance Above Sea Level	Depth of Water to Sea Level	Remarks
SANTA ROSA CREEK WELLS				
23R	30.14	83.42	53.28	
SR4	27.60	82.00	54.40	
SR3	19.29	54.30	35.01	
SR1	17.10	46.40	29.30	
RP#1		46.25		
RP#2		33.11		Not Read
21R3	7.00	12.88	5.88	41767
WBE	10.45	16.87	6.42	
WBW		17.02		Not Read
AVERAGE LEVEL OF CCSD SANTA ROSA WELLS SR1 & SR3 =				32.16 FEET
CCSD SANTA ROSA WELL SR4 =				54.40 FEET

SAN SIMEON CREEK WELLS				
16D1	6.61	11.36	4.75	
MW4	10.87	15.95	5.08	
MW1		42.11		Not Read
MW2		38.10		Not Read
MW3		49.56		Not Read
9M1		65.63		Not Read
9P2	9.21	19.11	9.90	
9P7		20.69		Not Read
9L1	14.06	27.33	13.27	
RIW		25.41		Not Read
SS4	12.92	25.92	13.00	SS4 to 9P2 Gradient = + 3.10
MIW		29.89		Not Read
SS3	13.42	33.73	20.31	
SS2	12.05	33.16	21.11	
SS1	11.65	32.37	20.72	
11B1		105.43		Not Read
11C1	12.68	98.20	85.52	
PFNW		93.22		Not Read
10A1		78.18		Not Read
10G2		62.95		Not Read
10G1		59.55		Not Read
10F2		66.92		Not Read
10M2	22.20	55.21	33.01	
9J3		43.45		Not Read
lagoon	19.08			mitigation erosion none
AVERAGE LEVEL OF CCSD SAN SIMEON WELLS SS1,SS2 & SS				20.71 FEET

revised 6/6/16

Red Font are the CCSD's Production Wells, as measured on 1/14/2019

reference point on 16d1,miw1,miw2,miw3,9p7,riw,miw1,ss1,ss2 and ss3 updat 2/17/2015

CAMBRIA COMMUNITY SERVICES DISTRICT
WELL WATER LEVELS FOR 03-Jan-19

Well Code	Distance Ref. Point to Water Level	Reference Point Distance Above Sea Level	Depth of Water to Sea Level	Remarks
SANTA ROSA CREEK WELLS				
23R	30.91	83.42	52.51	
SR4	28.22	82.00	53.78	
SR3	19.96	54.30	34.34	
SR1	18.01	46.40	28.39	
RP#1		46.25		Not Read
RP#2		33.11		Not Read
21R3	7.15	12.88	5.73	41767
WBE	11.08	16.87	5.79	
WBW	11.30	17.02	5.72	
AVERAGE LEVEL OF CCSD SANTA ROSA WELLS SR1 & SR3 =				31.37 FEET
CCSD SANTA ROSA WELL SR4 =				53.78 FEET

SAN SIMEON CREEK WELLS				
16D1	6.00	11.36	5.36	
MW4	10.40	15.95	5.55	
MW1	20.29	42.11	21.82	
MW2	19.35	38.10	18.75	
MW3	25.67	49.56	23.89	
9M1	27.88	65.63	37.75	
9P2	10.54	19.11	8.57	
9P7	12.10	20.69	8.59	
9L1	15.92	30.50	14.58	
RIW	11.91	25.41	13.50	
SS4	14.45	25.92	11.47	SS4 to 9P2 Gradient = + 2.90
MIW	12.47	29.89	17.42	
SS3	15.15	33.73	18.58	
SS2	13.60	33.16	19.56	
SS1	13.07	32.37	19.30	
11B1	19.49	105.43	85.94	
11C1	14.39	98.20	83.81	
PFNW	13.20	93.22	80.02	
10A1	26.38	78.18	51.80	
10G2	19.69	62.95	43.26	
10G1	18.00	59.55	41.55	
10F2	26.10	66.92	40.82	
10M2	22.90	55.21	32.31	
9J3	16.08	43.45	27.37	
lagoon	18.33			mitigation erosion none
AVERAGE LEVEL OF CCSD SAN SIMEON WELLS SS1,SS2 & SS				19.15 FEET

revised 6/6/16

Red Font are the CCSD's Production Wells, as measured on 03-Jan-19
reference point on 16d1,miw1,miw2,miw3,9p7,riw,miw1,ss1,ss2 and ss3 updat 2/17/2015

CAMBRIA COMMUNITY SERVICES DISTRICT
WELL WATER LEVELS FOR 15-Dec-19

Well Code	Distance Ref. Point to Water Level	Reference Point Distance Above Sea Level	Depth of Water to Sea Level	Remarks
SANTA ROSA CREEK WELLS				
23R	30.94	83.42	52.48	
SR4	28.24	82.00	53.76	
SR3	19.84	54.30	34.46	
SR1	17.87	46.40	28.53	
RP#1		46.25		Not Read
RP#2		33.11		Not Read
21R3	7.43	12.88	5.45	41767
WBE	11.28	16.87	5.59	
WBW		17.02		Not Read
AVERAGE LEVEL OF CCSD SANTA ROSA WELLS SR1 & SR3 =				31.50 FEET
CCSD SANTA ROSA WELL SR4 =				53.76 FEET

SAN SIMEON CREEK WELLS				
16D1	5.68	11.36	5.68	
MW4	10.13	15.95	5.82	
MW1		42.11		Not Read
MW2		38.10		Not Read
MW3		49.56		Not Read
9M1		65.63		Not Read
9P2	11.89	19.11	7.22	
9P7		20.69		Not Read
9L1	20.58	30.50	9.92	
RIW		25.41		Not Read
SS4	17.22	25.92	8.70	SS4 to 9P2 Gradient = + 1.48
MIW		29.89		Not Read
SS3	21.70	33.73	12.03	
SS2	20.70	33.16	12.46	
SS1	20.34	32.37	12.03	
11B1		105.43		Not Read
11C1	13.96	98.20	84.24	
PFNW		93.22		Not Read
10A1		78.18		Not Read
10G2		62.95		Not Read
10G1		59.55		Not Read
10F2		66.92		Not Read
10M2	28.60	55.21	26.61	
9J3		43.45		Not Read
lagoon	18.36			mitigation erosion none
AVERAGE LEVEL OF CCSD SAN SIMEON WELLS SS1,SS2 & SS				12.17 FEET

revised 6/6/16

Red Font are the CCSD's Production Wells, as measured on 15-Dec-18
reference point on 16d1,miw1,miw2,miw3,9p7,riw,miw1,ss1,ss2 and ss3 updat 2/17/2015

CAMBRIA COMMUNITY SERVICES DISTRICT
WELL WATER LEVELS FOR 03-Dec-18

Well Code	Distance Ref. Point to Water Level	Reference Point Distance Above Sea Level	Depth of Water to Sea Level	Remarks
SANTA ROSA CREEK WELLS				
23R	32.17	83.42	51.25	
SR4	29.46	82.00	52.54	
SR3	20.08	54.30	34.22	
SR1	18.16	46.40	28.24	
RP#1		46.25		Not Read
RP#2		33.11		Not Read
21R3	7.87	12.88	5.01	41767
WBE	11.77	16.87	5.10	
WBW	12.01	17.02	5.01	
AVERAGE LEVEL OF CCSD SANTA ROSA WELLS SR1 & SR3 =				31.23 FEET
CCSD SANTA ROSA WELL SR4 =				52.54 FEET

SAN SIMEON CREEK WELLS				
16D1	6.35	11.36	5.01	
MW4	10.91	15.95	5.04	
MW1	19.92	42.11	22.19	
MW2	19.09	38.10	19.01	
MW3	25.35	49.56	24.21	
9M1	27.62	65.63	38.01	
9P2	11.95	19.11	7.16	
9P7	13.40	20.69	7.29	
9L1	19.73	30.50	10.77	
RIW	16.00	25.41	9.41	
SS4	16.85	25.92	9.07	SS4 to 9P2 Gradient = + 1.91
MIW	17.35	29.89	12.54	
SS3	20.50	33.73	13.23	
SS2	19.66	33.16	13.50	
SS1	19.30	32.37	13.07	
11B1	27.03	105.43	78.40	
11C1	22.11	98.20	76.09	
PFNW	20.89	93.22	72.33	
10A1	34.60	78.18	43.58	
10G2	25.98	62.95	36.97	
10G1	23.99	59.55	35.56	
10F2	32.10	66.92	34.82	
10M2	29.50	55.21	25.71	
9J3	21.98	43.45	21.47	
lagoon	18.36			mitigation erosion none
AVERAGE LEVEL OF CCSD SAN SIMEON WELLS SS1,SS2 & SS				13.27 FEET

revised 6/6/16

Red Font are the CCSD's Production Wells, as measured on 03-Dec-18
reference point on 16d1,miw1,miw2,miw3,9p7,riw,miw1,ss1,ss2 and ss3 updat 2/17/2015

CAMBRIA COMMUNITY SERVICES DISTRICT
WELL WATER LEVELS FOR 19-Nov-18

Well Code	Distance Ref. Point to Water Level	Reference Point Distance Above Sea Level	Depth of Water to Sea Level	Remarks
SANTA ROSA CREEK WELLS				
23R	34.95	83.42	48.47	
SR4	32.12	82.00	49.88	
SR3	23.51	54.30	30.79	
SR1	19.93	46.40	26.47	
RP#1		46.25		Not Read
RP#2		33.11		Not Read
21R3	9.84	12.88	3.04	41767
WBE	13.59	16.87	3.28	
WBW		17.02		Not Read
AVERAGE LEVEL OF CCSD SANTA ROSA WELLS SR1 & SR3 =				28.63 FEET
CCSD SANTA ROSA WELL SR4 =				49.88 FEET

SAN SIMEON CREEK WELLS				
16D1	7.99	11.36	3.37	
MW4	12.44	15.95	3.51	
MW1		42.11		Not Read
MW2		38.10		Not Read
MW3		49.56		Not Read
9M1		65.63		Not Read
9P2	13.09	19.11	6.02	
9P7		20.69		Not Read
9L1	21.37	30.50	9.13	
RIW		25.41		Not Read
SS4	18.20	25.92	7.72	SS4 to 9P2 Gradient = + 1.70
MIW		29.89		Not Read
SS3	22.67	33.73	11.06	
SS2	22.30	33.16	10.86	
SS1	21.95	32.37	10.42	
11B1		105.43		Not Read
11C1	40.64	98.20	57.56	
PFNW		93.22		Not Read
10A1		78.18		Not Read
10G2		62.95		Not Read
10G1		59.55		Not Read
10F2		66.92		Not Read
10M2	34.80	55.21	20.41	
9J3		43.45		Not Read
lagoon	20.13			mitigation erosion none
AVERAGE LEVEL OF CCSD SAN SIMEON WELLS SS1,SS2 & SS				10.78 FEET

revised 6/6/16

Red Font are the CCSD's Production Wells, as measured on 19-Nov-18
reference point on 16d1,miw1,miw2,miw3,9p7,riw,miw1,ss1,ss2 and ss3 updat 2/17/2015

CAMBRIA COMMUNITY SERVICES DISTRICT
WELL WATER LEVELS FOR 11/5

Well Code	Distance Ref. Point to Water Level	Reference Point Distance Above Sea Level	Depth of Water to Sea Level	Remarks
SANTA ROSA CREEK WELLS				
23R	32.66	83.42	50.76	
SR4	29.95	82.00	52.05	
SR3	23.21	54.30	31.09	
SR1	19.12	46.40	27.28	
RP#1		46.25		
RP#2		33.11		Not Read
21R3	9.79	12.88	3.09	41695
WBE	13.45	16.87	3.42	
WBW	13.86	17.02	3.16	
AVERAGE LEVEL OF CCSD SANTA ROSA WELLS SR1 & SR3 =				29.19 FEET
CCSD SANTA ROSA WELL SR4 =				52.05 FEET

SAN SIMEON CREEK WELLS				
16D1	8.06	11.36	3.30	
MW4	12.48	15.95	3.47	
MW1	19.52	42.11	22.59	
MW2	18.85	38.10	19.25	
MW3	24.89	49.56	24.67	
9M1	28.75	65.63	36.88	
9P2	13.02	19.11	6.09	
9P7	13.49	20.69	7.20	
9L1	21.14	30.50	9.36	
RIW	17.42	25.41	7.99	
SS4	18.08	25.92	7.84	SS4 to 9P2 Gradient = + 1.75
MIW	18.86	29.89	11.03	
SS3	22.05	33.73	11.68	
SS2	21.45	33.16	11.71	
SS1	21.22	32.37	11.15	
11B1	45.37	105.43	60.06	
11C1	38.93	98.20	59.27	
PFNW	34.96	93.22	58.26	
10A1	40.51	78.18	37.67	
10G2	30.60	62.95	32.35	
10G1	28.59	59.55	30.96	
10F2	36.74	66.92	30.18	
10M2	34.60	55.21	20.61	
9J3	25.79	43.45	17.66	
lagoon	20.24			mitigation errosion none
AVERAGE LEVEL OF CCSD SAN SIMEON WELLS SS1,SS2 & SS				11.51 FEET

revised 6/6/16

Red Font are the CCSD's Production Wells, as measured on 05-Nov-18

reference point on 16d1,miw1,miw2,miw3,9p7,riw,miw1,ss1,ss2 and ss3 updat 2/17/2015

CAMBRIA COMMUNITY SERVICES DISTRICT
WELL WATER LEVELS FOR 10/15

Well Code	Distance Ref. Point to Water Level	Reference Point Distance Above Sea Level	Depth of Water to Sea Level	Remarks
SANTA ROSA CREEK WELLS				
23R	37.35	83.42	46.07	
SR4	33.11	82.00	48.89	
SR3	21.90	54.30	32.40	
SR1	18.76	46.40	27.64	
RP#1		46.25		
RP#2		33.11		Not Read
21R3	9.39	12.88	3.49	41344
WBE	13.60	16.87	3.27	
WBW		17.02		Not Read
AVERAGE LEVEL OF CCSD SANTA ROSA WELLS SR1 & SR3 =				30.02 FEET
CCSD SANTA ROSA WELL SR4 =				48.89 FEET

SAN SIMEON CREEK WELLS				
16D1	7.86	11.36	3.50	
MW4	12.30	15.95	3.65	
MW1		42.11		Not Read
MW2		38.10		Not Read
MW3		49.56		Not Read
9M1		65.63		Not Read
9P2	12.80	19.11	6.31	
9P7		20.69		Not Read
9L1	20.72	30.50	9.78	
RIW		25.41		Not Read
SS4	17.74	25.92	8.18	SS4 to 9P2 Gradient = + 1.87
MIW		29.89		Not Read
SS3	21.71	33.73	12.02	
SS2	21.19	33.16	11.97	
SS1	20.82	32.37	11.55	
11B1		105.43		Not Read
11C1	35.92	98.20	62.28	
PFNW		93.22		Not Read
10A1		78.18		Not Read
10G2		62.95		Not Read
10G1		59.55		Not Read
10F2		66.92		Not Read
10M2	33.80	55.21	21.41	
9J3		43.45		Not Read
lagoon	20.03			mitigation erosion none
AVERAGE LEVEL OF CCSD SAN SIMEON WELLS SS1,SS2 & SS				11.85 FEET

revised 6/6/16

Red Font are the CCSD's Production Wells, as measured on 10/15

reference point on 16d1,miw1,miw2,miw3,9p7,riw,miw1,ss1,ss2 and ss3 updated 2/17/2015

10/1/18

CAMBRIA COMMUNITY SERVICES DISTRICT
WELL WATER LEVELS FOR 10/1/18

Well Code	Distance Ref. Point to Water Level	Reference Point Distance Above Sea Level	Depth of Water to Sea Level	Remarks
SANTA ROSA CREEK WELLS				
23R	32.32	83.42	51.10	
SR4	29.70	82.00	52.30	
SR3	20.70	54.30	33.60	
SR1	18.25	46.40	28.15	
RP#1		46.25		
RP#2		33.11		Not Read
21R3	9.80	12.88	3.08	41268
WBE	13.40	16.87	3.47	
WBW	13.82	17.02	3.20	
AVERAGE LEVEL OF CCSD SANTA ROSA WELLS SR1 & SR3 =				30.88 FEET
CCSD SANTA ROSA WELL SR4 =				52.30 FEET

SAN SIMEON CREEK WELLS				
16D1	8.02	11.36	3.34	
MW4	12.44	15.95	3.51	
MW1	18.90	42.11	23.21	
MW2	18.25	38.10	19.85	
MW3	24.15	49.56	25.41	
9M1	30.25	65.63	35.38	
9P2	12.86	19.11	6.25	
9P7	13.20	20.69	7.49	
9L1	20.84	27.33	6.49	
RIW	17.11	25.41	8.30	
SS4	17.82	25.92	8.10	SS4 to 9P2 Gradient = + 1.85
MIW	18.55	29.89	11.34	
SS3	21.70	33.73	12.03	
SS2	20.64	33.16	12.52	
SS1	20.75	32.37	11.62	
11B1	40.15	105.43	65.28	
11C1	33.75	98.20	64.45	
PFNW	29.95	93.22	63.27	
10A1	36.50	78.18	41.68	
10G2	28.00	62.95	34.95	
10G1	26.10	59.55	33.45	
10F2	34.35	66.92	32.57	
10M2	32.20	55.21	23.01	
9J3	24.22	43.45	19.23	
lagoon	20.20			mitigation erosion none
AVERAGE LEVEL OF CCSD SAN SIMEON WELLS SS1,SS2 & SS				12.06 FEET

revised 6/6/16

Red Font are the CCSD's Production Wells, as measured on 10/1/18

reference point on 16d1,miw1,miw2,miw3,9p7,riw,miw1,ss1,ss2 and ss3 updated 2/17/2015

9/17/18

CAMBRIA COMMUNITY SERVICES DISTRICT
WELL WATER LEVELS FOR 9/17/18

Well Code	Distance Ref. Point to Water Level	Reference Point Distance Above Sea Level	Depth of Water to Sea Level	Remarks
SANTA ROSA CREEK WELLS				
23R	32.06	83.42	51.36	
SR4	29.31	82.00	52.69	
SR3	20.45	54.30	33.85	
SR1	18.33	46.40	28.07	
RP#1		46.25		
RP#2		33.11		Not Read
21R3	9.78	12.88	3.10	41344
WBE	13.40	16.87	3.47	
WBW		17.02		Not Read
AVERAGE LEVEL OF CCSD SANTA ROSA WELLS SR1 & SR3 =				30.96 FEET
CCSD SANTA ROSA WELL SR4 =				52.69 FEET

SAN SIMEON CREEK WELLS				
16D1	8.09	11.36	3.27	
MW4	12.54	15.95	3.41	
MW1		42.11		Not Read
MW2		38.10		Not Read
MW3		49.56		Not Read
9M1		65.63		Not Read
9P2	12.75	19.11	6.36	
9P7		20.69		Not Read
9L1	20.55	30.50	9.95	
RIW		25.41		Not Read
SS4	17.60	25.92	8.32	SS4 to 9P2 Gradient = + 1.96
MIW		29.89		Not Read
SS3	21.42	33.73	12.31	
SS2	20.39	33.16	12.77	
SS1	19.92	32.37	12.45	
11B1		105.43		Not Read
11C1	31.31	98.20	66.89	
PFNW		93.22		Not Read
10A1		78.18		Not Read
10G2		62.95		Not Read
10G1		59.55		Not Read
10F2		66.92		Not Read
10M2	30.82	55.21	24.39	
9J3		43.45		Not Read
lagoon	20.29			mitigation erosion none
AVERAGE LEVEL OF CCSD SAN SIMEON WELLS SS1,SS2 & SS				12.51 FEET

revised 6/6/16

Red Font are the CCSD's Production Wells, as measured on 9/17/18

reference point on 16d1,miw1,miw2,miw3,9p7,riw,miw1,ss1,ss2 and ss3 updated 2/17/2015

9/5/18

CAMBRIA COMMUNITY SERVICES DISTRICT
WELL WATER LEVELS FOR 9/5/18

Well Code	Distance Ref. Point to Water Level	Reference Point Distance Above Sea Level	Depth of Water to Sea Level	Remarks
SANTA ROSA CREEK WELLS				
23R	34.10	83.42	49.32	
SR4	31.11	82.00	50.89	
SR3	20.15	54.30	34.15	
SR1	18.22	46.40	28.18	
RP#1		46.25		
RP#2		33.11		Not Read
21R3	9.73	12.88	3.15	41268
WBE	13.32	16.87	3.55	
WBW	13.71	17.02	3.31	
AVERAGE LEVEL OF CCSD SANTA ROSA WELLS SR1 & SR3 =				31.17 FEET
CCSD SANTA ROSA WELL SR4 =				50.89 FEET

SAN SIMEON CREEK WELLS				
16D1	8.11	11.36	3.25	
MW4	12.52	15.95	3.43	
MW1	18.40	42.11	23.71	
MW2	17.77	38.10	20.33	
MW3	23.56	49.56	26.00	
9M1	27.19	65.63	38.44	
9P2	12.48	19.11	6.63	
9P7	12.79	20.69	7.90	
9L1	20.39	27.33	6.94	
RIW	16.67	25.41	8.74	
SS4	17.40	25.92	8.52	SS4 to 9P2 Gradient = + 1.89
MIW	18.07	29.89	11.82	
SS3	21.20	33.73	12.53	
SS2	20.21	33.16	12.95	
SS1	20.09	32.37	12.28	
11B1	35.47	105.43	69.96	
11C1	29.13	98.20	69.07	
PFNW	25.52	93.22	67.70	
10A1	33.26	78.18	44.92	
10G2	25.21	62.95	37.74	
10G1	23.51	59.55	36.04	
10F2	31.80	66.92	35.12	
10M2	30.12	55.21	25.09	
9J3	23.05	43.45	20.40	
lagoon	20.35			mitigation erosion none
AVERAGE LEVEL OF CCSD SAN SIMEON WELLS SS1,SS2 & SS				12.59 FEET

revised 6/6/16

Red Font are the CCSD's Production Wells, as measured on 9/5/18

reference point on 16d1,miw1,miw2,miw3,9p7,riw,miw1,ss1,ss2 and ss3 updat 2/17/2015

8/13/18

CAMBRIA COMMUNITY SERVICES DISTRICT
WELL WATER LEVELS FOR 8/13/18

Well Code	Distance Ref. Point to Water Level	Reference Point Distance Above Sea Level	Depth of Water to Sea Level	Remarks
SANTA ROSA CREEK WELLS				
23R	34.79	83.42	48.63	
SR4	31.07	82.00	50.93	
SR3	20.21	54.30	34.09	
SR1	18.18	46.40	28.22	
RP#1		46.25		
RP#2		33.11		Not Read
21R3	9.24	12.88	3.64	41344
WBE	12.87	16.87	4.00	
WBW		17.02		Not Read
AVERAGE LEVEL OF CCSD SANTA ROSA WELLS SR1 & SR3 =				31.16 FEET
CCSD SANTA ROSA WELL SR4 =				50.93 FEET

SAN SIMEON CREEK WELLS				
16D1	7.80	11.36	3.56	
MW4	12.19	15.95	3.76	
MW1		42.11		Not Read
MW2		38.10		Not Read
MW3		49.56		Not Read
9M1		65.63		Not Read
9P2	12.10	19.11	7.01	
9P7		20.69		Not Read
9L1	16.19	27.33	11.14	
RIW		25.41		Not Read
SS4	16.64	25.92	9.28	SS4 to 9P2 Gradient = + 2.27
MIW		29.89		Not Read
SS3	19.90	33.73	13.83	
SS2	18.98	33.16	14.18	
SS1	18.76	32.37	13.61	
11B1		105.43		Not Read
11C1	24.90	98.20	73.30	
PFNW		93.22		Not Read
10A1		78.18		Not Read
10G2		62.95		Not Read
10G1		59.55		Not Read
10F2		66.92		Not Read
10M2	27.98	55.21	27.23	
9J3		43.45		Not Read
lagoon	20.01			mitigation erosion none
AVERAGE LEVEL OF CCSD SAN SIMEON WELLS SS1,SS2 & SS				13.87 FEET

revised 6/6/16

Red Font are the CCSD's Production Wells, as measured on 8/13/18

reference point on 16d1,miw1,miw2,miw3,9p7,riw,miw1,ss1,ss2 and ss3 updated 2/17/2015

8/1/18

CAMBRIA COMMUNITY SERVICES DISTRICT
WELL WATER LEVELS FOR 8/1/18

Well Code	Distance Ref. Point to Water Level	Reference Point Distance Above Sea Level	Depth of Water to Sea Level	Remarks
SANTA ROSA CREEK WELLS				
23R	32.52	83.42	50.90	
SR4	29.83	82.00	52.17	
SR3	20.40	54.30	33.90	
SR1	18.20	46.40	28.20	
RP#1		46.25		
RP#2		33.11		Not Read
21R3	9.65	12.88	3.23	41268
WBE	13.21	16.87	3.66	
WBW	13.65	17.02	3.37	
AVERAGE LEVEL OF CCSD SANTA ROSA WELLS SR1 & SR3 =				31.05 FEET
CCSD SANTA ROSA WELL SR4 =				52.17 FEET

SAN SIMEON CREEK WELLS				
16D1	7.88	11.36	3.48	
MW4	12.21	15.95	3.74	
MW1	17.44	42.11	24.67	
MW2	16.92	38.10	21.18	
MW3	22.47	49.56	27.09	
9M1	31.41	65.63	34.22	
9P2	11.77	19.11	7.34	
9P7	12.21	20.69	8.48	
9L1	15.55	27.33	11.78	
RIW	14.95	25.41	10.46	
SS4	16.35	25.92	9.57	SS4 to 9P2 Gradient = + 2.23
MIW	16.05	29.89	13.84	
SS3	18.97	33.73	14.76	
SS2	18.00	33.16	15.16	
SS1	17.54	32.37	14.83	
11B1	29.15	105.43	76.28	
11C1	23.05	98.20	75.15	
PFNW	19.75	93.22	73.47	
10A1	28.80	78.18	49.38	
10G2	21.27	62.95	41.68	
10G1	19.57	59.55	39.98	
10F2	27.95	66.92	38.97	
10M2	26.15	55.21	29.06	
9J3	19.45	43.45	24.00	
lagoon	20.30			mitigation erosion none
AVERAGE LEVEL OF CCSD SAN SIMEON WELLS SS1,SS2 & SS				14.92 FEET

revised 6/6/16

Red Font are the CCSD's Production Wells, as measured on 8/1/18

reference point on 16d1,miw1,miw2,miw3,9p7,riw,miw1,ss1,ss2 and ss3 updated 2/17/2015

7/16/18

CAMBRIA COMMUNITY SERVICES DISTRICT
WELL WATER LEVELS FOR 7/16/18

Well Code	Distance Ref. Point to Water Level	Reference Point Distance Above Sea Level	Depth of Water to Sea Level	Remarks
SANTA ROSA CREEK WELLS				
23R	32.90	83.42	50.52	
SR4	30.10	82.00	51.90	
SR3	20.02	54.30	34.28	
SR1	18.04	46.40	28.36	
RP#1		46.25		
RP#2		33.11		Not Read
21R3	9.12	12.88	3.76	41002
WBE	12.81	16.87	4.06	
WBW		17.02		Not Read
AVERAGE LEVEL OF CCSD SANTA ROSA WELLS SR1 & SR3 =				31.32 FEET
CCSD SANTA ROSA WELL SR4 =				51.90 FEET

SAN SIMEON CREEK WELLS				
16D1	7.81	11.36	3.55	
MW4	12.18	15.95	3.77	
MW1		42.11		Not Read
MW2		38.10		Not Read
MW3		49.56		Not Read
9M1		65.63		Not Read
9P2	11.69	19.11	7.42	
9P7		20.69		Not Read
9L1	15.35	27.33	11.98	
RIW		25.41		Not Read
SS4	16.12	25.92	9.80	SS4 to 9P2 Gradient = + 2.38
MIW		29.89		Not Read
SS3	18.92	33.73	14.81	
SS2	18.00	33.16	15.16	
SS1	17.36	32.37	15.01	
11B1		105.43		Not Read
11C1	20.52	98.20	77.68	
PFNW		93.22		Not Read
10A1		78.18		Not Read
10G2		62.95		Not Read
10G1		59.55		Not Read
10F2		66.92		Not Read
10M2	24.25	55.21	30.96	
9J3		43.45		Not Read
lagoon	20.10			mitigation erosion none
AVERAGE LEVEL OF CCSD SAN SIMEON WELLS SS1,SS2 & SS				14.99 FEET

revised 6/6/16

Red Font are the CCSD's Production Wells, as measured on 7/16/18

reference point on 16d1,miw1,miw2,miw3,9p7,riw,miw1,ss1,ss2 and ss3 updated 2/17/2015

7/2/18

CAMBRIA COMMUNITY SERVICES DISTRICT
WELL WATER LEVELS FOR 7/2/18

Well Code	Distance Ref. Point to Water Level	Reference Point Distance Above Sea Level	Depth of Water to Sea Level	Remarks
SANTA ROSA CREEK WELLS				
23R	35.59	83.42	47.83	
SR4	31.85	82.00	50.15	
SR3	20.00	54.30	34.30	
SR1	17.95	46.40	28.45	
RP#1		46.25		
RP#2		33.11		Not Read
21R3	9.25	12.88	3.63	40682
WBE	12.86	16.87	4.01	
WBW	13.25	17.02	3.77	
AVERAGE LEVEL OF CCSD SANTA ROSA WELLS SR1 & SR3 =				31.38 FEET
CCSD SANTA ROSA WELL SR4 =				50.15 FEET

SAN SIMEON CREEK WELLS

16D1	8.16	11.36	3.20	
MW4	12.53	15.95	3.42	
MW1	16.38	42.11	25.73	
MW2	15.65	38.10	22.45	
MW3	21.27	49.56	28.29	
9M1	40.00	65.63	25.63	
9P2	11.50	19.11	7.61	
9P7	11.72	20.69	8.97	
9L1	14.43	27.33	12.90	
RIW	13.85	25.41	11.56	
SS4	15.62	25.92	10.30	SS4 to 9P2 Gradient = + 2.69
MIW	14.73	29.89	15.16	
SS3	17.63	33.73	16.10	
SS2	16.75	33.16	16.41	
SS1	16.03	32.37	16.34	
11B1	23.25	105.43	82.18	
11C1	17.80	98.20	80.40	
PFNW	15.72	93.22	77.50	
10A1	26.24	78.18	51.94	
10G2	19.75	62.95	43.20	
10G1	18.10	59.55	41.45	
10F2	26.24	66.92	40.68	
10M2	23.59	55.21	31.62	
9J3	17.51	43.45	25.94	
lagoon	20.45			mitigation erosion none

AVERAGE LEVEL OF CCSD SAN SIMEON WELLS SS1,SS2 & SS

16.28 FEET

revised 6/6/16

Red Font are the CCSD's Production Wells, as measured on 7/2/18

reference point on 16d1,miw1,miw2,miw3,9p7,riw,miw1,ss1,ss2 and ss3 updated 2/17/2015

6/18/18

CAMBRIA COMMUNITY SERVICES DISTRICT
WELL WATER LEVELS FOR 6/18/18

Well Code	Distance Ref. Point to Water Level	Reference Point Distance Above Sea Level	Depth of Water to Sea Level	Remarks
SANTA ROSA CREEK WELLS				
23R	36.51	83.42	46.91	
SR4	32.57	82.00	49.43	
SR3	19.89	54.30	34.41	
SR1	18.01	46.40	28.39	
RP#1		46.25		
RP#2		33.11		Not Read
21R3	8.20	12.88	4.68	41002
WBE	12.03	16.87	4.84	
WBW		17.02		Not Read
AVERAGE LEVEL OF CCSD SANTA ROSA WELLS SR1 & SR3 =				31.40 FEET
CCSD SANTA ROSA WELL SR4 =				49.43 FEET

SAN SIMEON CREEK WELLS				
16D1	7.22	11.36	4.14	
MW4	11.60	15.95	4.35	
MW1		42.11		Not Read
MW2		38.10		Not Read
MW3		49.56		Not Read
9M1		65.63		Not Read
9P2	11.10	19.11	8.01	
9P7		20.69		Not Read
9L1	13.40	27.33	13.93	
RIW		25.41		Not Read
SS4	14.95	25.92	10.97	SS4 to 9P2 Gradient = + 2.96
MIW		29.89		Not Read
SS3	16.06	33.73	17.67	
SS2	15.01	33.16	18.15	
SS1	14.22	32.37	18.15	
11B1		105.43		Not Read
11C1	16.13	98.20	82.07	
PFNW		93.22		Not Read
10A1		78.18		Not Read
10G2		62.95		Not Read
10G1		59.55		Not Read
10F2		66.92		Not Read
10M2	22.89	55.21	32.32	
9J3		43.45		Not Read
lagoon	19.64			mitigation erosion none
AVERAGE LEVEL OF CCSD SAN SIMEON WELLS SS1,SS2 & SS				17.99 FEET

revised 6/6/16

Red Font are the CCSD's Production Wells, as measured on 6/18/18

reference point on 16d1,miw1,miw2,miw3,9p7,riw,miw1,ss1,ss2 and ss3 updated 2/17/2015

6/4/18

CAMBRIA COMMUNITY SERVICES DISTRICT
WELL WATER LEVELS FOR 6/4/18

Well Code	Distance Ref. Point to Water Level	Reference Point Distance Above Sea Level	Depth of Water to Sea Level	Remarks
SANTA ROSA CREEK WELLS				
23R	35.76	83.42	47.66	
SR4	31.62	82.00	50.38	
SR3	19.87	54.30	34.43	
SR1	17.99	46.40	28.41	
RP#1		46.25		
RP#2		33.11		Not Read
21R3	9.93	12.88	2.95	40682
WBE	12.62	16.87	4.25	
WBW	13.00	17.02	4.02	
AVERAGE LEVEL OF CCSD SANTA ROSA WELLS SR1 & SR3 =				31.42 FEET
CCSD SANTA ROSA WELL SR4 =				50.38 FEET

SAN SIMEON CREEK WELLS				
16D1	8.00	11.36	3.36	
MW4	12.34	15.95	3.61	
MW1	15.26	42.11	26.85	
MW2	15.03	38.10	23.07	
MW3	20.03	49.56	29.53	
9M1	27.84	65.63	37.79	
9P2	10.98	19.11	8.13	
9P7	11.25	20.69	9.44	
9L1	12.47	27.33	14.86	
RIW	11.77	25.41	13.64	
SS4	14.50	25.92	11.42	SS4 to 9P2 Gradient = + 3.29
MIW	12.29	29.89	17.60	
SS3	15.00	33.73	18.73	
SS2	13.99	33.16	19.17	
SS1	12.99	32.37	19.38	
11B1	19.82	105.43	85.61	
11C1	14.81	98.20	83.39	
PFNW	13.55	93.22	79.67	
10A1	26.61	78.18	51.57	
10G2	19.64	62.95	43.31	
10G1	17.95	59.55	41.60	
10F2	26.04	66.92	40.88	
10M2	22.52	55.21	32.69	
9J3	16.22	43.45	27.23	
lagoon	20.32			mitigation erosion none
AVERAGE LEVEL OF CCSD SAN SIMEON WELLS SS1,SS2 & SS				19.09 FEET

revised 6/6/16

Red Font are the CCSD's Production Wells, as measured on 6/4/18

reference point on 16d1,miw1,miw2,miw3,9p7,riw,miw1,ss1,ss2 and ss3 updated 2/17/2015

5/14/18

CAMBRIA COMMUNITY SERVICES DISTRICT
WELL WATER LEVELS FOR 5/14/18

Well Code	Distance Ref. Point to Water Level	Reference Point Distance Above Sea Level	Depth of Water to Sea Level	Remarks
SANTA ROSA CREEK WELLS				
23R	34.83	83.42	48.59	
SR4	31.07	82.00	50.93	
SR3	19.84	54.30	34.46	
SR1	17.93	46.40	28.47	
RP#1		46.25		
RP#2		33.11		Not Read
21R3	8.08	12.88	4.80	40770
WBE	12.65	16.87	4.22	
WBW		17.02		Not Read
AVERAGE LEVEL OF CCSD SANTA ROSA WELLS SR1 & SR3 =				31.47 FEET
CCSD SANTA ROSA WELL SR4 =				50.93 FEET

SAN SIMEON CREEK WELLS				
16D1	7.31	11.36	4.05	
MW4	11.67	15.95	4.28	
MW1		42.11		Not Read
MW2		38.10		Not Read
MW3		49.56		Not Read
9M1		65.63		Not Read
9P2	10.43	19.11	8.68	
9P7		20.69		Not Read
9L1	12.08	27.33	15.25	
RIW		25.41		Not Read
SS4	14.15	25.92	11.77	SS4 to 9P2 Gradient = + 3.09
MIW		29.89		Not Read
SS3	14.45	33.73	19.28	
SS2	13.62	33.16	19.54	
SS1	12.79	32.37	19.58	
11B1		105.43		Not Read
11C1	14.24	98.20	83.96	
PFNW		93.22		Not Read
10A1		78.18		Not Read
10G2		62.95		Not Read
10G1		59.55		Not Read
10F2		66.92		Not Read
10M2	22.45	55.21	32.76	
9J3		43.45		Not Read
lagoon	19.59			mitigation erosion none
AVERAGE LEVEL OF CCSD SAN SIMEON WELLS SS1,SS2 & SS				19.47 FEET

revised 6/6/16

Red Font are the CCSD's Production Wells, as measured on 5/14/18

reference point on 16d1,miw1,miw2,miw3,9p7,riw,miw1,ss1,ss2 and ss3 updated 2/17/2015

4/30/18

CAMBRIA COMMUNITY SERVICES DISTRICT
WELL WATER LEVELS FOR 4/30/18

Well Code	Distance Ref. Point to Water Level	Reference Point Distance Above Sea Level	Depth of Water to Sea Level	Remarks
SANTA ROSA CREEK WELLS				
23R	32.50	83.42	50.92	
SR4	30.21	82.00	51.79	
SR3	19.79	54.30	34.51	
SR1	17.88	46.40	28.52	
RP#1		46.25		
RP#2		33.11		Not Read
21R3	7.50	12.88	5.38	40682
WBE	11.39	16.87	5.48	
WBW	11.68	17.02	5.34	

AVERAGE LEVEL OF CCSD SANTA ROSA WELLS SR1 & SR3 = 31.52 FEET
CCSD SANTA ROSA WELL SR4 = 51.79 FEET

SAN SIMEON CREEK WELLS				
16D1	6.85	11.36	4.51	
MW4	11.24	15.95	4.71	
MW1	13.50	42.11	28.61	
MW2	13.71	38.10	24.39	
MW3	18.20	49.56	31.36	
9M1	23.50	65.63	42.13	
9P2	10.60	19.11	8.51	
9P7	10.49	20.69	10.20	
9L1	11.91	27.33	15.42	
RIW	11.42	25.41	13.99	
SS4	14.07	25.92	11.85	SS4 to 9P2 Gradient = + 3.34
MIW	12.53	29.89	17.36	
SS3	14.69	33.73	19.04	
SS2	13.71	33.16	19.45	
SS1	12.73	32.37	19.64	
11B1	19.28	105.43	86.15	
11C1	13.96	98.20	84.24	
PFNW	12.96	93.22	80.26	
10A1	25.89	78.18	52.29	
10G2	19.45	62.95	43.50	
10G1	19.45	59.55	40.10	
10F2	25.88	66.92	41.04	
10M2	22.37	55.21	32.84	
9J3	16.08	43.45	27.37	
lagoon	19.16			mitigation errosion none

AVERAGE LEVEL OF CCSD SAN SIMEON WELLS SS1,SS2 & SS 19.38 FEET

revised 6/6/16

Red Font are the CCSD's Production Wells, as measured on 4/30/18

reference point on 16d1,miw1,miw2,miw3,9p7,riw,miw1,ss1,ss2 and ss3 updat 2/17/2015

4/16/18

CAMBRIA COMMUNITY SERVICES DISTRICT
WELL WATER LEVELS FOR 4/16/18

Well Code	Distance Ref. Point to Water Level	Reference Point Distance Above Sea Level	Depth of Water to Sea Level	Remarks
SANTA ROSA CREEK WELLS				
23R	34.81	83.42	48.61	
SR4	29.67	82.00	52.33	
SR3	19.66	54.30	34.64	
SR1	17.73	46.40	28.67	
RP#1		46.25		
RP#2		33.11		Not Read
21R3	9.09	12.88	3.79	40593
WBE	12.65	16.87	4.22	
WBW		17.02		Not Read
AVERAGE LEVEL OF CCSD SANTA ROSA WELLS SR1 & SR3 =				31.66 FEET
CCSD SANTA ROSA WELL SR4 =				52.33 FEET

SAN SIMEON CREEK WELLS				
16D1	8.63	11.36	2.73	
MW4	12.40	15.95	3.55	
MW1		42.11		Not Read
MW2		38.10		Not Read
MW3		49.56		Not Read
9M1		65.63		Not Read
9P2	10.41	19.11	8.70	
9P7		20.69		Not Read
9L1	11.72	27.33	15.61	
RIW		25.41		Not Read
SS4	13.86	25.92	12.06	SS4 to 9P2 Gradient = + 3.36
MIW		29.89		Not Read
SS3	14.47	33.73	19.26	
SS2	12.99	33.16	20.17	
SS1	12.52	32.37	19.85	
11B1		105.43		Not Read
11C1	13.68	98.20	84.52	
PFNW		93.22		Not Read
10A1		78.18		Not Read
10G2		62.95		Not Read
10G1		59.55		Not Read
10F2		66.92		Not Read
10M2	22.28	55.21	32.93	
9J3		43.45		Not Read
lagoon	21.42			mitigation erosion none
AVERAGE LEVEL OF CCSD SAN SIMEON WELLS SS1,SS2 & SS				19.76 FEET

revised 6/6/16

Red Font are the CCSD's Production Wells, as measured on 4/16/18

reference point on 16d1,miw1,miw2,miw3,9p7,riw,miw1,ss1,ss2 and ss3 updated 2/17/2015

4/2/18

CAMBRIA COMMUNITY SERVICES DISTRICT
WELL WATER LEVELS FOR 4/2/18

Well Code	Distance Ref. Point to Water Level	Reference Point Distance Above Sea Level	Depth of Water to Sea Level	Remarks
SANTA ROSA CREEK WELLS				
23R	31.97	83.42	51.45	
SR4	29.17	82.00	52.83	
SR3	19.44	54.30	34.86	
SR1	17.51	46.40	28.89	
RP#1		46.25		
RP#2		33.11		Not Read
21R3	8.99	12.88	3.89	40568
WBE	12.55	16.87	4.32	
WBW	12.93	17.02	4.09	
AVERAGE LEVEL OF CCSD SANTA ROSA WELLS SR1 & SR3 =				31.88 FEET
CCSD SANTA ROSA WELL SR4 =				52.83 FEET

SAN SIMEON CREEK WELLS				
16D1	7.68	11.36	3.68	
MW4	11.90	15.95	4.05	
MW1	11.62	42.11	30.49	
MW2	12.42	38.10	25.68	
MW3	17.51	49.56	32.05	
9M1	38.44	65.63	27.19	
9P2	9.98	19.11	9.13	
9P7	7.82	20.69	12.87	
9L1	11.34	27.33	15.99	
RIW	10.64	25.41	14.77	
SS4	13.58	25.92	12.34	SS4 to 9P2 Gradient = + 3.21
MIW	11.17	29.89	18.72	
SS3	13.88	33.73	19.85	
SS2	12.54	33.16	20.62	
SS1	12.13	32.37	20.24	
11B1	18.73	105.43	86.70	
11C1	13.27	98.20	84.93	
PFNW	12.44	93.22	80.78	
10A1	25.35	78.18	52.83	
10G2	19.09	62.95	43.86	
10G1	17.44	59.55	42.11	
10F2	25.51	66.92	41.41	
10M2	22.09	55.21	33.12	
9J3	15.78	43.45	27.67	
lagoon	20.15			mitigation erosion none
AVERAGE LEVEL OF CCSD SAN SIMEON WELLS SS1,SS2 & SS				20.24 FEET

revised 6/6/16

Red Font are the CCSD's Production Wells, as measured on 4/2/18

reference point on 16d1,miw1,miw2,miw3,9p7,riw,miw1,ss1,ss2 and ss3 updat 2/17/2015

3/15/18

CAMBRIA COMMUNITY SERVICES DISTRICT
WELL WATER LEVELS FOR 3/15/18

Well Code	Distance Ref. Point to Water Level	Reference Point Distance Above Sea Level	Depth of Water to Sea Level	Remarks
SANTA ROSA CREEK WELLS				
23R	30.92	83.42	52.50	
SR4	28.19	82.00	53.81	
SR3	19.45	54.30	34.85	
SR1	17.28	46.40	29.12	
RP#1		46.25		
RP#2		33.11		Not Read
21R3	8.20	12.88	4.68	40568
WBE	11.86	16.87	5.01	
WBW		17.02		Not Read
AVERAGE LEVEL OF CCSD SANTA ROSA WELLS SR1 & SR3 =				31.99 FEET
CCSD SANTA ROSA WELL SR4 =				53.81 FEET

SAN SIMEON CREEK WELLS				
16D1	7.41	11.36	3.95	
MW4	11.41	15.95	4.54	
MW1		42.11		Not Read
MW2		38.10		Not Read
MW3		49.56		Not Read
9M1		65.63		Not Read
9P2	9.07	19.11	10.04	
9P7		20.69		Not Read
9L1	10.82	27.33	16.51	
RIW		25.41		Not Read
SS4	12.84	25.92	13.08	SS4 to 9P2 Gradient = + 3.04
MIW		29.89		Not Read
SS3	13.41	33.73	20.32	
SS2	11.98	33.16	21.18	
SS1	11.59	32.37	20.78	
11B1		105.43		Not Read
11C1	13.10	98.20	85.10	
PFNW		93.22		Not Read
10A1		78.18		Not Read
10G2		62.95		Not Read
10G1		59.55		Not Read
10F2		66.92		Not Read
10M2	21.81	55.21	33.40	
9J3		43.45		Not Read
lagoon	20.15			mitigation erosion none
AVERAGE LEVEL OF CCSD SAN SIMEON WELLS SS1,SS2 & SS				20.76 FEET

revised 6/6/16

Red Font are the CCSD's Production Wells, as measured on 3/15/18

reference point on 16d1,miw1,miw2,miw3,9p7,riw,miw1,ss1,ss2 and ss3 updated 2/17/2015

2/13/18

CAMBRIA COMMUNITY SERVICES DISTRICT
WELL WATER LEVELS FOR 2/13/18

Well Code	Distance Ref. Point to Water Level	Reference Point Distance Above Sea Level	Depth of Water to Sea Level	Remarks
SANTA ROSA CREEK WELLS				
23R	31.94	83.42	51.48	
SR4	29.14	82.00	52.86	
SR3	20.03	54.30	34.27	
SR1	17.91	46.40	28.49	
RP#1		46.25		
RP#2		33.11		Not Read
21R3	7.08	12.88	5.80	40502
WBE	11.40	16.87	5.47	
WBW		17.02		Not Read
AVERAGE LEVEL OF CCSD SANTA ROSA WELLS SR1 & SR3 =				31.38 FEET
CCSD SANTA ROSA WELL SR4 =				52.86 FEET

SAN SIMEON CREEK WELLS				
16D1	7.70	11.36	3.66	
MW4	12.07	15.95	3.88	
MW1		42.11		Not Read
MW2		38.10		Not Read
MW3		49.56		Not Read
9M1		65.63		Not Read
9P2	11.13	19.11	7.98	
9P7		20.69		Not Read
9L1	16.22	27.33	11.11	
RIW		25.41		Not Read
SS4	16.35	25.92	9.57	SS4 to 9P2 Gradient = + 1.59
MIW		29.89		Not Read
SS3	20.67	33.73	13.06	
SS2	20.05	33.16	13.11	
SS1	19.43	32.37	12.94	
11B1		105.43		Not Read
11C1	20.80	98.20	77.40	
PFNW		93.22		Not Read
10A1		78.18		Not Read
10G2		62.95		Not Read
10G1		59.55		Not Read
10F2		66.92		Not Read
10M2	28.46	55.21	26.75	
9J3		43.45		Not Read
lagoon	19.98			mitigation erosion none
AVERAGE LEVEL OF CCSD SAN SIMEON WELLS SS1,SS2 & SS				13.04 FEET

revised 6/6/16

Red Font are the CCSD's Production Wells, as measured on 2/13/18

reference point on 16d1,miw1,miw2,miw3,9p7,riw,miw1,ss1,ss2 and ss3 updat 2/17/2015

2/5/18

CAMBRIA COMMUNITY SERVICES DISTRICT
WELL WATER LEVELS FOR 2/5/18

Well Code	Distance Ref. Point to Water Level	Reference Point Distance Above Sea Level	Depth of Water to Sea Level	Remarks
SANTA ROSA CREEK WELLS				
23R	32.52	83.42	50.90	
SR4	29.70	82.00	52.30	
SR3	20.00	54.30	34.30	
SR1	17.88	46.40	28.52	
RP#1		46.25		
RP#2		33.11		Not Read
21R3	7.19	12.88	5.69	40450
WBE	11.17	16.87	5.70	
WBW	11.30	17.02	5.72	
AVERAGE LEVEL OF CCSD SANTA ROSA WELLS SR1 & SR3 =				31.41 FEET
CCSD SANTA ROSA WELL SR4 =				52.30 FEET

SAN SIMEON CREEK WELLS				
16D1	7.61	11.36	3.75	
MW4	12.01	15.95	3.94	
MW1	18.06	42.11	24.05	
MW2	17.40	38.10	20.70	
MW3	23.32	49.56	26.24	
9M1	34.97	65.63	30.66	
9P2	10.86	19.11	8.25	
9P7	11.56	20.69	9.13	
9L1	15.66	27.33	11.67	
RIW	15.28	25.41	10.13	
SS4	16.01	25.92	9.91	SS4 to 9P2 Gradient = + 1.66
MIW	16.66	29.89	13.23	
SS3	19.76	33.73	13.97	
SS2	19.01	33.16	14.15	
SS1	18.60	32.37	13.77	
11B1	26.03	105.43	79.40	
11C1	20.23	98.20	77.97	
PFNW	17.64	93.22	75.58	
10A1	29.28	78.18	48.90	
10G2	22.75	62.95	40.20	
10G1	21.19	59.55	38.36	
10F2	29.65	66.92	37.27	
10M2	28.41	55.21	26.80	
9J3	21.78	43.45	21.67	
lagoon	17.55			mitigation erosion none
AVERAGE LEVEL OF CCSD SAN SIMEON WELLS SS1,SS2 & SS				13.96 FEET

revised 6/6/16

Red Font are the CCSD's Production Wells, as measured on 2/5/18

reference point on 16d1,miw1,miw2,miw3,9p7,riw,miw1,ss1,ss2 and ss3 updated 2/17/2015

1/16/18

CAMBRIA COMMUNITY SERVICES DISTRICT
WELL WATER LEVELS FOR 1/16/18

Well Code	Distance Ref. Point to Water Level	Reference Point Distance Above Sea Level	Depth of Water to Sea Level	Remarks
SANTA ROSA CREEK WELLS				
23R	33.68	83.42	49.74	
SR4	30.75	82.00	51.25	
SR3	19.97	54.30	34.33	
SR1	17.82	46.40	28.58	
RP#1		46.25		
RP#2		33.11		Not Read
21R3	6.42	12.88	6.46	40450
WBE	10.41	16.87	6.46	
WBW		17.02		Not Read
AVERAGE LEVEL OF CCSD SANTA ROSA WELLS SR1 & SR3 =				31.46 FEET
CCSD SANTA ROSA WELL SR4 =				51.25 FEET

SAN SIMEON CREEK WELLS				
16D1	6.11	11.36	5.25	
MW4	10.81	15.95	5.14	
MW1		42.11		Not Read
MW2		38.10		Not Read
MW3		49.56		Not Read
9M1		65.63		Not Read
9P2	10.85	19.11	8.26	
9P7		20.69		Not Read
9L1	15.86	27.33	11.47	
RIW		25.41		Not Read
SS4	16.08	25.92	9.84	SS4 to 9P2 Gradient = + 1.58
MIW		29.89		Not Read
SS3	19.82	33.73	13.91	
SS2	19.07	33.16	14.09	
SS1	18.66	32.37	13.71	
11B1		105.43		Not Read
11C1	19.63	98.20	78.57	
PFNW		93.22		Not Read
10A1		78.18		Not Read
10G2		62.95		Not Read
10G1		59.55		Not Read
10F2		66.92		Not Read
10M2	28.60	55.21	26.61	
9J3		43.45		Not Read
lagoon	17.55			mitigation erosion none
AVERAGE LEVEL OF CCSD SAN SIMEON WELLS SS1,SS2 & SS				13.90 FEET

revised 6/6/16

Red Font are the CCSD's Production Wells, as measured on 1/16/18

reference point on 16d1,miw1,miw2,miw3,9p7,riw,miw1,ss1,ss2 and ss3 updated 2/17/2015

1/2/18

CAMBRIA COMMUNITY SERVICES DISTRICT
WELL WATER LEVELS FOR 1/2/18

Well Code	Distance Ref. Point to Water Level	Reference Point Distance Above Sea Level	Depth of Water to Sea Level	Remarks
SANTA ROSA CREEK WELLS				
23R	33.95	83.42	49.47	
SR4	30.68	82.00	51.32	
SR3	20.01	54.30	34.29	
SR1	17.91	46.40	28.49	
RP#1		46.25		
RP#2		33.11		Not Read
21R3	8.27	12.88	4.61	40450
WBE	12.10	16.87	4.77	
WBW	12.36	17.02	4.66	
AVERAGE LEVEL OF CCSD SANTA ROSA WELLS SR1 & SR3 =				31.39 FEET
CCSD SANTA ROSA WELL SR4 =				51.32 FEET

SAN SIMEON CREEK WELLS				
16D1	8.12	11.36	3.24	
MW4	12.44	15.95	3.51	
MW1	17.55	42.11	24.56	
MW2	17.02	38.10	21.08	
MW3	22.77	49.56	26.79	
9M1	28.49	65.63	37.14	
9P2	10.97	19.11	8.14	
9P7	11.57	20.69	9.12	
9L1	16.30	27.33	11.03	
RIW	15.91	25.41	9.50	
SS4	16.31	25.92	9.61	SS4 to 9P2 Gradient = + 1.47
MIW	17.40	29.89	12.49	
SS3	20.52	33.73	13.21	
SS2	19.80	33.16	13.36	
SS1	19.41	32.37	12.96	
11B1	34.34	105.43	71.09	
11C1	28.16	98.20	70.04	
PFNW	24.85	93.22	68.37	
10A1	32.98	78.18	45.20	
10G2	24.90	62.95	38.05	
10G1	23.21	59.55	36.34	
10F2	31.50	66.92	35.42	
10M2	29.50	55.21	25.71	
9J3	22.80	43.45	20.65	
lagoon	20.39			mitigation erosion none
AVERAGE LEVEL OF CCSD SAN SIMEON WELLS SS1,SS2 & SS				13.18 FEET

revised 6/6/16

Red Font are the CCSD's Production Wells, as measured on 1/2/18

reference point on 16d1,miw1,miw2,miw3,9p7,riw,miw1,ss1,ss2 and ss3 updated 2/17/2015