

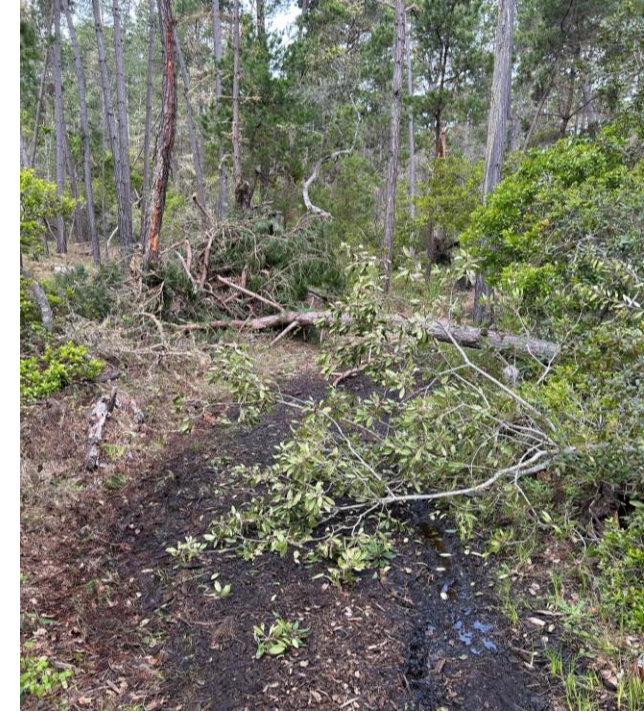


# Facilities and Resources Manager Report



## Open Space Properties

- The Department continues to respond to tree issues on CCSD open space lots. The pictures on this page shows a large Monterrey Pine tree that has uprooted and was falling towards the neighboring house. The only thing that stopped the tree from falling into the house was the tree in front of it. A local tree company was contacted, and the uprooted tree was quickly secured with ropes to other nearby trees. Two tree climbers worked simultaneously to top both the uprooted tree and the tree that it compromised.
- We have applied for and received a tree removal permit from SLO County. CCSD lot: 023-372-037. Two declining Monterrey Pines are scheduled to be removed.



## Fiscalini Ranch Preserve

- The Department continues to respond to trees issues on the Preserve. During the month of March multiple trails were temporarily closed as trees blocked paths or became a hazard to visitors.
- Trees were dropped, bucked and trails cleared by the Department
- Since the month of December, the Department has now coordinated work on close to 150 trees on both Fiscalini Ranch and open space properties.
  - The hardest work, clean up of trees, is yet to come.



## Dog Park Parking Lot and Road

Due to the winter rains the parking lot and road had a lot of wear and tear. Large potholes and ruts made the visit to the Park not so pleasant. Facilities Staff brought in material, graded and filled in the potholes and ruts.





## Pocket Park Center St.

- With the assistance of the San Luis Obispo County Sherriff's CAT team and a clean up crew, the Department coordinated the clean up of an encampment on the Park.
- Site visits were conducted prior to posting eviction notices by both the CAT team and F&R Staff to offer the occupant assistance in relocating.



## Tree Clean Up and Fence Repairs

- The Department has been coordinating and working on securing the Facilities yard and Water Departments pump house.
- Due to the flooding of the facility, about 50% of the fence collapsed. Uprooted trees and logs laid over the fence.
- With the assistance of a tree contractor all the tree debris was cleaned up.
- A fence and gate company were hired to install new fence and repair the front and side gates.



## Volunteer Help

- Friends of the Fiscalini Ranch Preserve volunteers assisted the Department in a day of clean up. Volunteers dismantled and relocated a nursery, stocked cement blocks, disposed of trash and sorted through and organized material for bench repairs.
- Thank you volunteers for the extra hand!!



## Mud and Debris Clean Up

- When the Santa Rosa Creek flooded the Department's headquarters large amounts of mud and debris was left behind.
- Before the Department could start sorting through what could be salvaged, the debris and mud needed to be removed.
- F&R spent long day's piling up mud, removing and disposing of trash. Facilities Staff loaded up 10 semi trucks full of mud!!

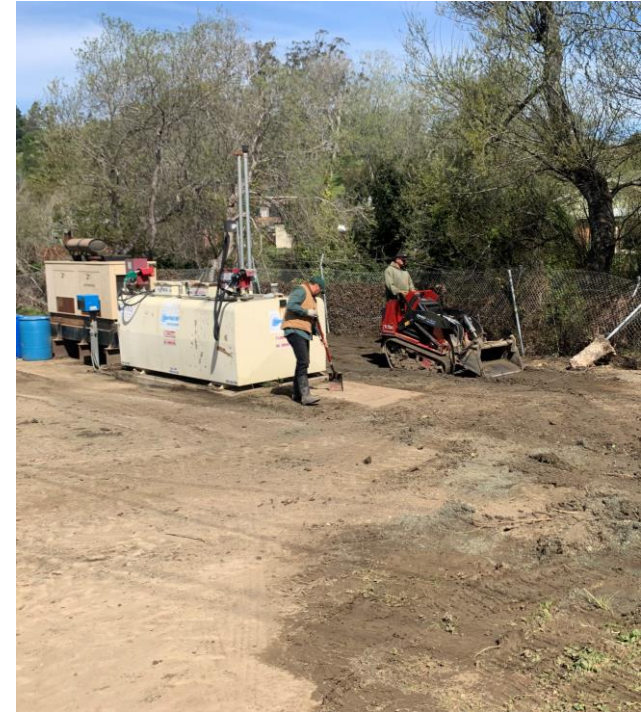






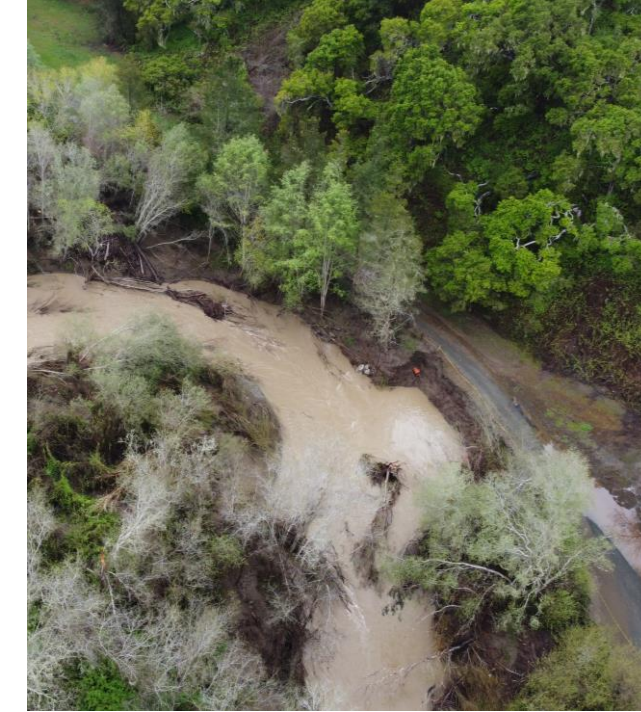
## Shed

- With close to 6 feet of water at the lowest part of the headquarters, the Departments shed stood no chance and was lifted off the foundation, turned on it's side and laid over the back fence. We had very little faith that the building could be saved. With a little ingenuity the Department was able to get the building back on its feet without causing more damage.
- All the interior items were removed, cabinets disassembled and disposed off, back siding removed, and the interior thoroughly cleaned. New siding, exterior trim and drip edge was installed. The building is now usable!



## CCSD Fuel Station

- The Santa Rosa Creek flooding caused interruption in providing fuel to the Water, Wastewater, Administration and Facilities and Resources Departments.
- Mud and debris surrounded the fuel station, a car port was uprooted and laid over the fuel station and there was concern of water infiltration to the computer system and/or fuel tank.
- While the Department worked on restoring this service, the Departments utilized local gas stations to fuel up.
- The car port was carefully disassembled and removed, and debris cleaned up. A fuel technician then inspected the entire system, no issues were found with the tank or computer system. The tanks were topped off and service to Departments was reestablished.



## Santa Rosa Creek Trail

- Major damage occurred to the Santa Rosa Creek Trail due to the March storm event.
- Large parts of the trail were completely flooded, mud and debris were left behind on the trail, willow trees and a Monterrey pine lay across it at various points. Sections of the decomposed granite trail were washed away.
- Above right is an aerial photo of a section of the trail where the creek has started to erode the bank and is threatening to take out the trail.
- The Trail continues to be closed. The Department is working on coordinating clean up of trees and prioritizing repairs to the section that leads to the wastewaters lift station.