

OpenGov 

# Enterprise Asset Management

*Improving efficiency, resident service, and cost control*



CAMBRIA COMMUNITY  
SERVICES DISTRICT

February 12th, 2026

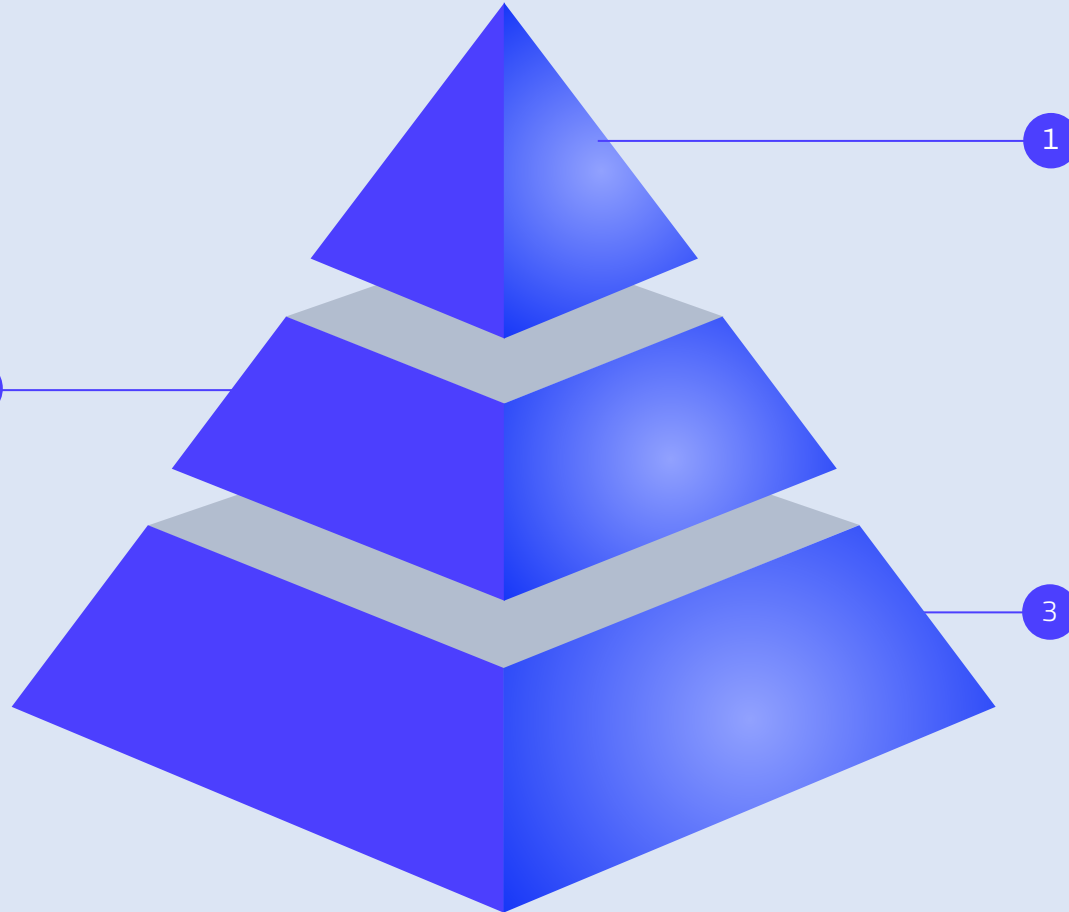


# Alignment with Strategic Priorities



## #2 Facilities & Resources

*"...manage and provide stewardship of district assets, in a timely, cost-effective manner..."*



## #1 Administration & Finance

*"...develop realistic plans & processes for executing strategic goals..."*

## #3 Water & Wastewater

*"...ensure reliable performance for decades to come...meet ongoing challenges effectively"*

# The Modern Partner for Government



## Operate Efficiently

Increase collaboration and deliver on your goals faster by modernizing your software and processes



## Adapt to Change

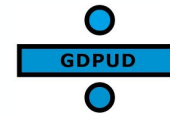
Stay agile with scalable tools and processes that drive success in an ever-changing environment



## Strengthen Public Trust

Meet your constituents' expectations with better service and transparent stewardship of their tax dollars

2,000+ Partners Nationwide  
300+ agencies in CA utilizing OpenGov



Georgetown Divide Public Utility District, CA



Trabuco Canyon Water District, CA



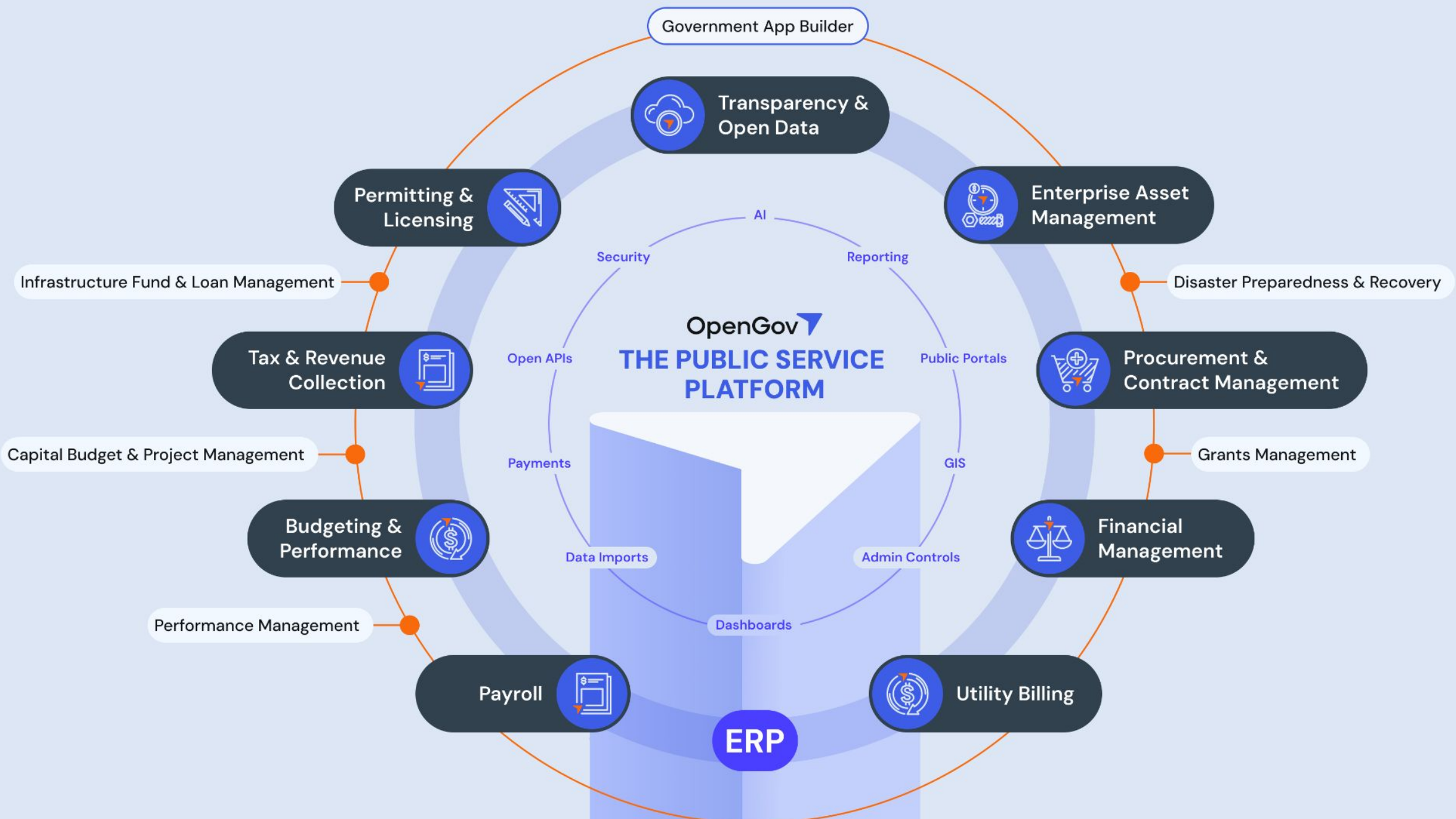
Mariana Ranchos County Water District, CA



City of Grover Beach, CA



City of Paso Robles, CA



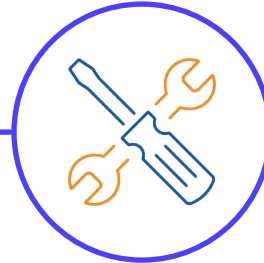
# Enterprise Asset Management

Purpose-built for the Public Sector



## ASSETS

Know what you have, where it is, and what condition it's in.



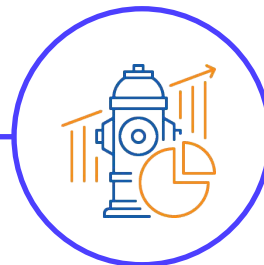
## WORK

Create, assign, and track tasks from anywhere with a truly mobile workforce.



## RESOURCES

Estimate, assign, and track labor, equipment, materials, and vendors.



## INFRASTRUCTURE PLANNING

Model asset scenarios and develop data-driven plans for the future

# Current Challenges and Processes

- 1. No single system of record – asset, work, and cost data live in multiple places (GIS, paper, spreadsheets).**
- 2. Institutional knowledge lives in staff memory – turnover risks losing critical infrastructure history.**
- 3. Preventive maintenance is inconsistent across utilities, facilities, and fleet.**
- 4. True labor, material, and fleet costs aren't clearly tied to assets.**
- 5. Reactive maintenance drives avoidable expenses (e.g., \$72K vac truck blower replacement).**
- 6. Limited visibility into long-term capital needs in dollars.**
- 7. Basic questions require digging – not instant, data-backed answers.**

# OpenGov Partnership Benefits

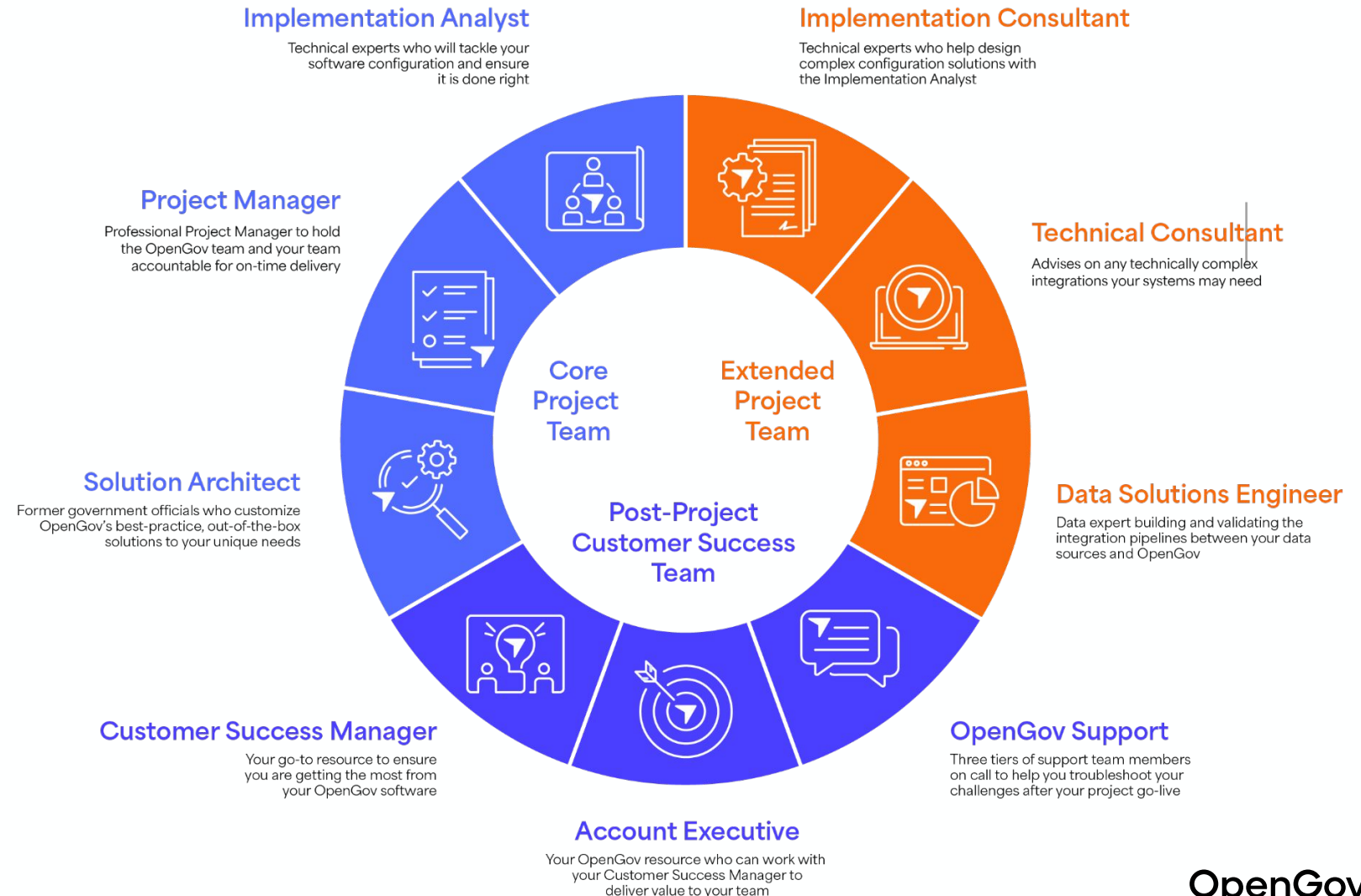
1. **Single system of record for assets, work, and cost**
2. **Track work and resources in one place (labor, materials, fleet, vendors)**
3. **Move from reactive to proactive maintenance with automated preventive schedules**
4. **Quantify true lifecycle costs to support smarter budgeting and capital planning**
5. **Real-time reporting & analytics for leadership and board transparency**
6. **Mobile, field-first workflows (online/offline) that staff actually use**
7. **Scales across the District – water, wastewater, facilities, fleet, fire, parks**
8. **Long-term partnership with award-winning support and implementation**

# Return on Investment and Mitigated Spend

Item	Projected Savings
Asset Management Labor Savings (2 hrs/week per staff)	\$111,000
Reduced Emergency/Reactive Repairs	\$75,000+
Projected Preventative Maintenance Savings	\$300,000+
Maximized FEMA Reimbursement(s)	\$100,000+
<b>Total Annual Savings</b>	<b>\$486,000+</b>

# A Team of Experts in Your Corner

- Over 500+ Years of Government Experience
- 8 Stevie Awards for Customer Service Excellence
- Tried and True - Thousands of Successful Implementations



**Thank You!**



# Appendix

# Implementation Overview

**Key Deliverables:** *Please refer to future SOW for complete overview*

- **Domains: 6 Domains**
  - Water Treatment
  - Water Distribution
  - Wastewater Treatment
  - Wastewater Collection
  - Facilities
  - Fleet

## Implementation and Training:

- Remote Requirements gathering
- Remote Implementation
- Included 4-day On-Site Training
  - Adds \$2,800 in Travel & Expense (T&E)
- Remote Go-Live

## Functional Areas:

- Request Management
- Work Management
- Asset Management
- Resource/Inventory Management
- Mobile Application
- Administrator Functions
- Advanced Reporting and Dashboarding
- Preventative Maintenance
- Asset Inspections & Conditions
- + Much More

# Investment Summary

Annual Software Subscription, Unlimited Users, Professional Services Implementation, Ongoing Support & Maintenance. Future Software Enhancements, Fixes, and Updates

## OpenGov Investment Summary - Enterprise Asset Management

Subscription Term	Months	Software	Professional Services	Term Total
February 1, 2026 - June 30, 2026	5	\$15,702.32	\$32,832.80	\$48,535.13
July 1, 2026 - June 30, 2027	12	\$39,569.83	\$25,025.00	\$64,594.83
July 1, 2027 - June 30, 2028	12	\$41,548.33	\$0	\$41,548.33
July 1, 2028 - June 30, 2029	12	\$43,625.74	\$0	\$43,625.74
July 1, 2029 - June 30, 2030	12	\$45,807.03	\$0	\$45,807.03

### OpenGov Estimate Includes:

+ \$2,800 Travel & Expense

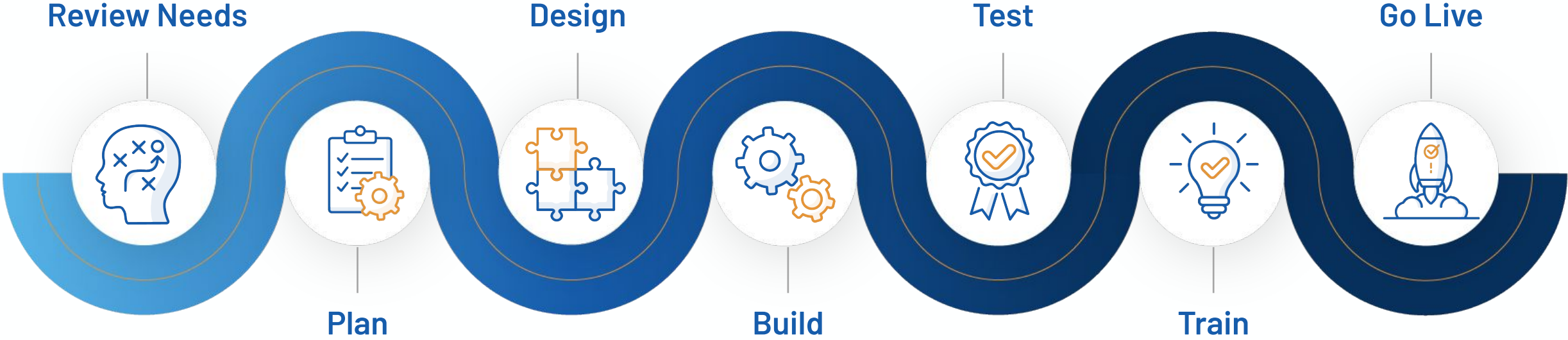
- **OpenGov Enterprise Asset Management**
  - **Domains (6):** Water Treatment, Water Distribution, Wastewater Collection, Wastewater Treatment, Facilities, and Fleet
  - **Included:** 4-day On-Site Training
    - Adds \$2,800 in Travel & Expense (T&E)

**Expiration: Based on a completed agreement on or before February 28, 2026**



# Professional Services Deployment

*Turn-Key Implementation*



# Customer Success

*Your Advocate within OpenGov*



## Point of Contact

We schedule regular communications to build a strong partnership



## Product Updates

Workshops, webinars, user groups, and 1:1 support all available to ensure your success



## Long-Term Success

Best practices and training resources to help drive adoption and value



## Expand Your Capabilities

Connect you to the services and products to increase your impact and effectiveness