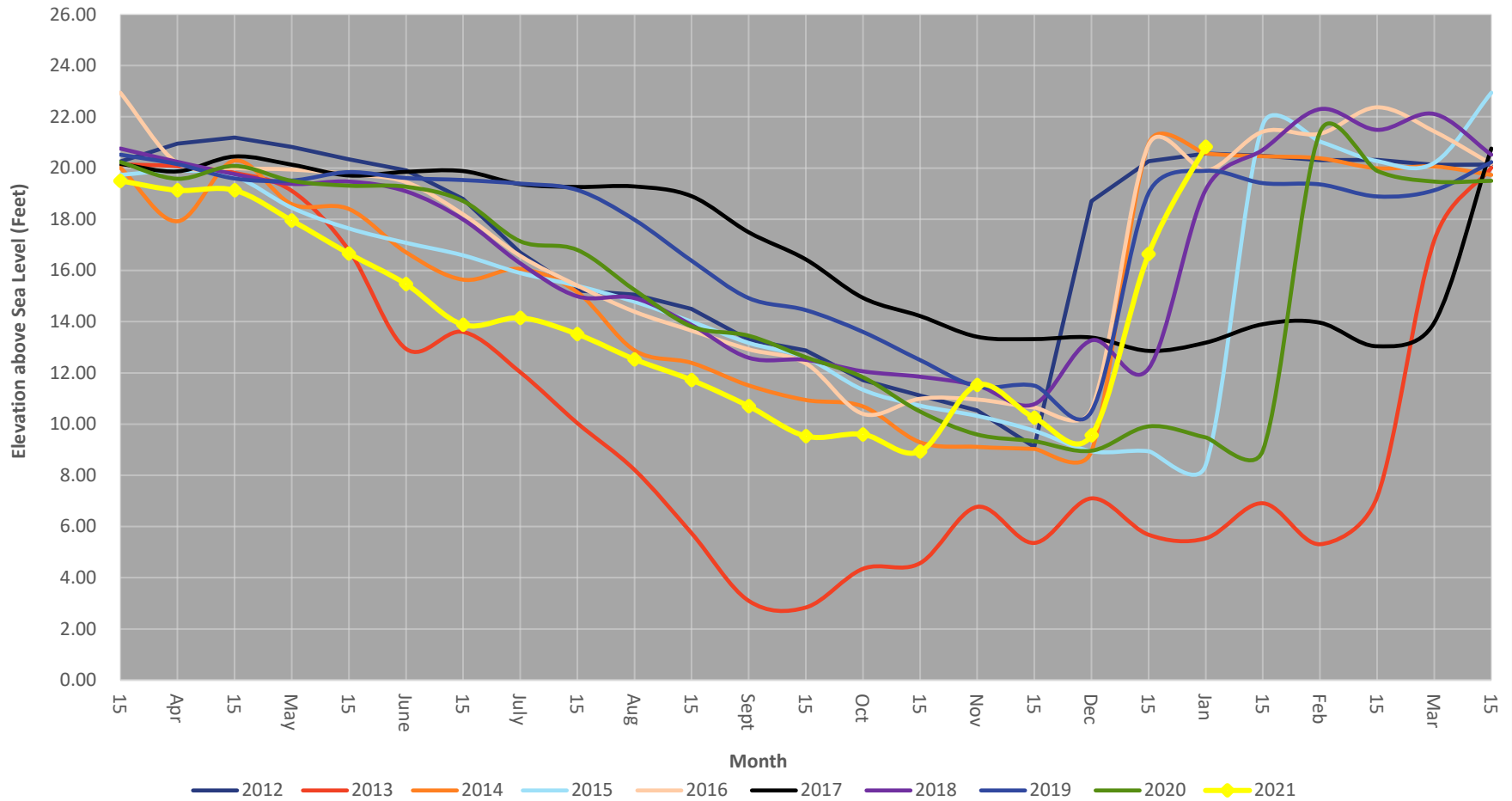


San Simeon Creek Well Levels

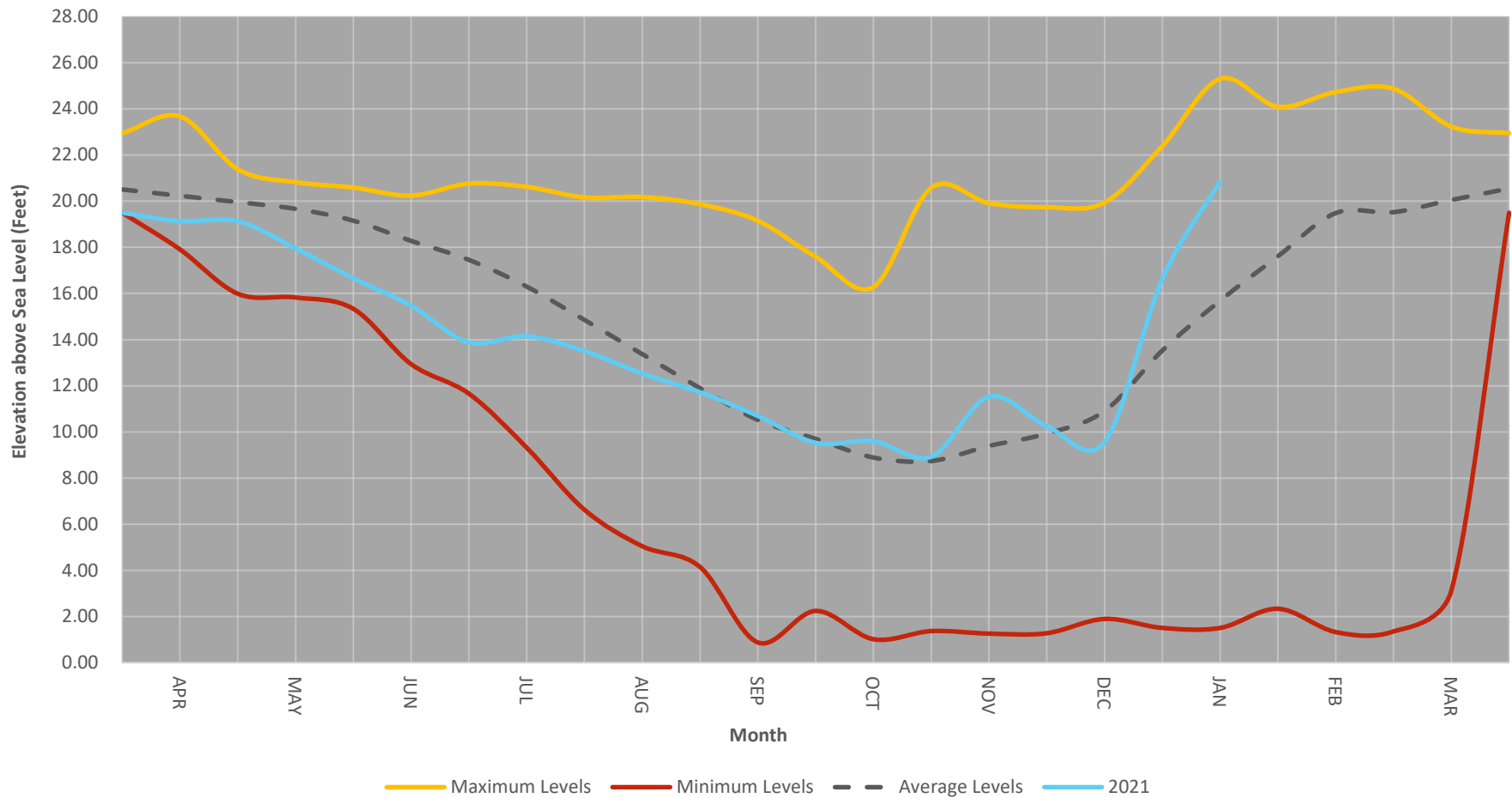
Last 10 years

March, 2012 - Current

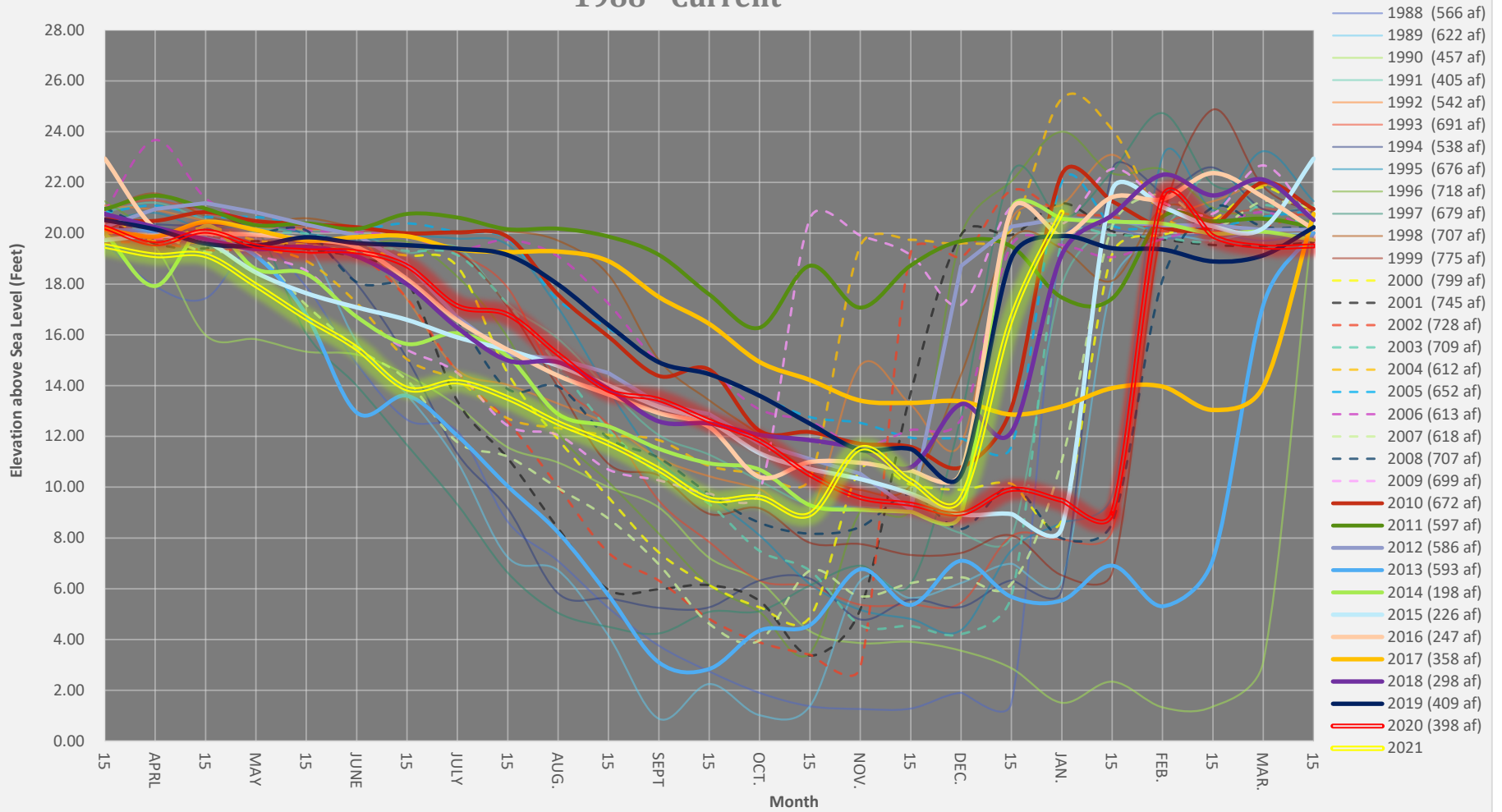


San Simeon Creek Well Levels

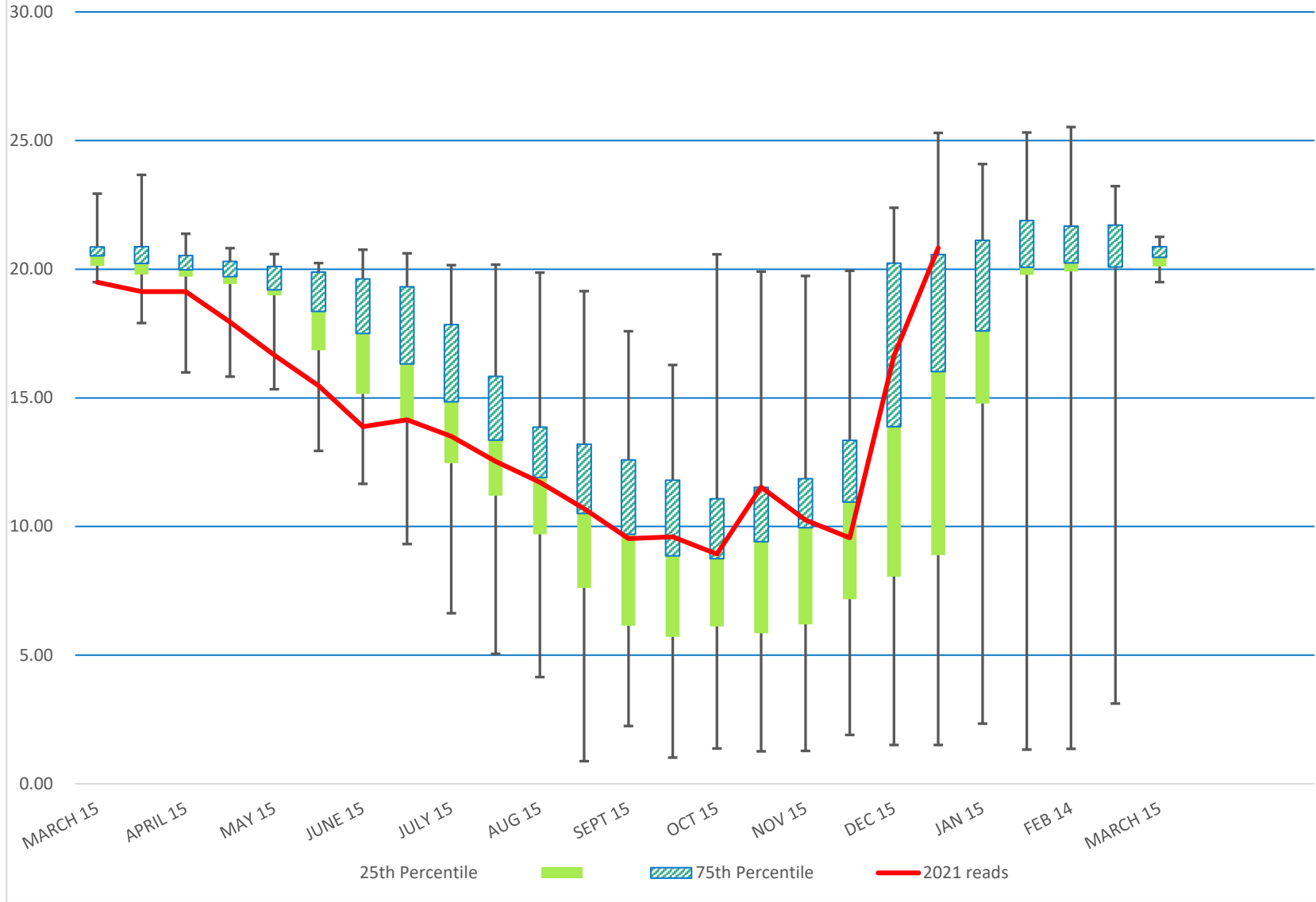
Mid-March 2021 levels to date and 1988 to Current Min, Max, & Average



San Simeon Creek Well Levels 1988 - Current



1988 to Current Statistical San Simeon Well Level Summary by Month
showing Minimums, Maximums, 25 % Percentile, 75% Percentile
Average Level is the line between the Blue (hatched) and Green (solid) bars



SANTA ROSA CREEK WELL LEVELS

March 15th, 2021 - Current

— 23R
 -◆- SR4
 -◆- SR3
 ◆ Indicates CCSD Production wells

