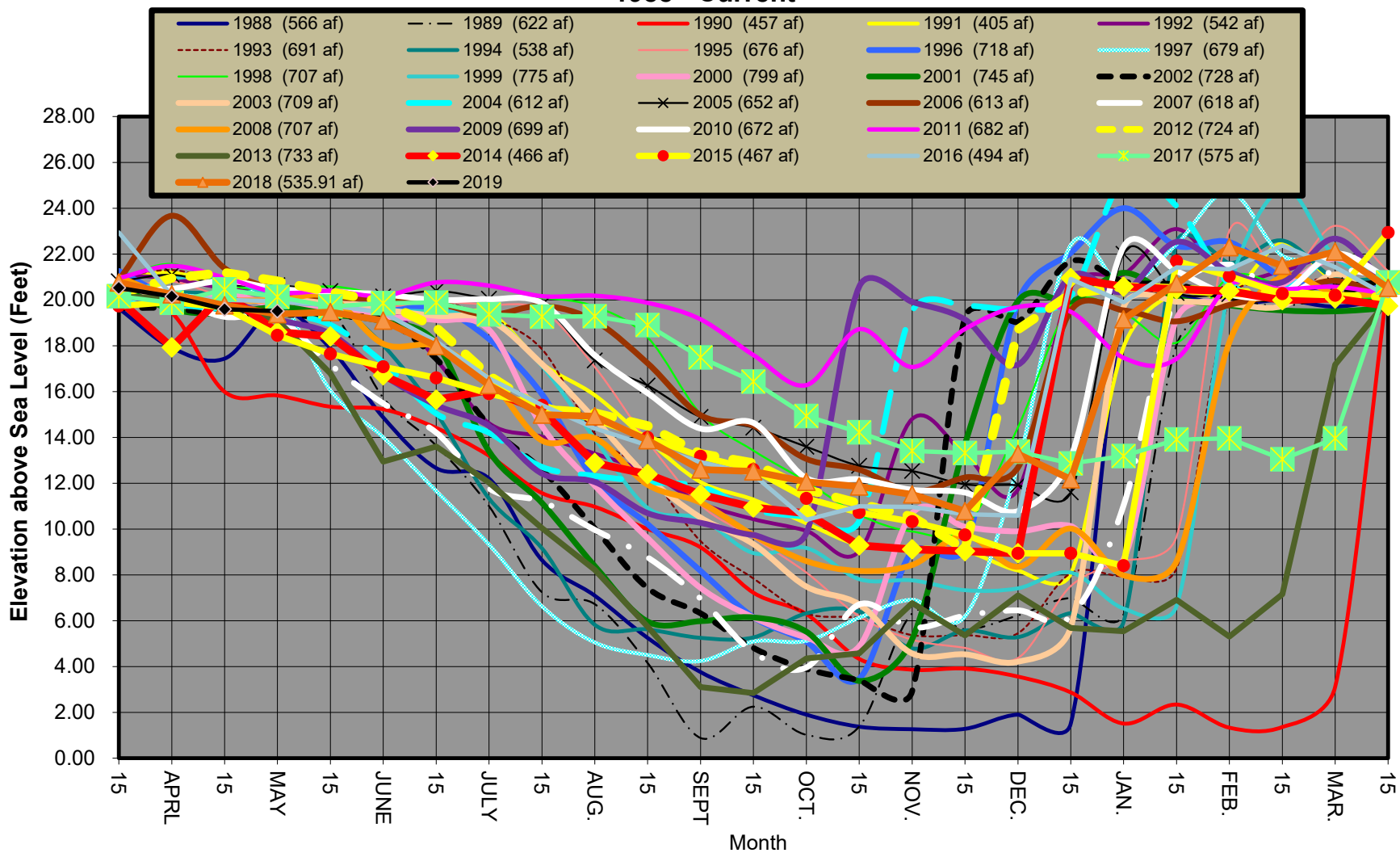
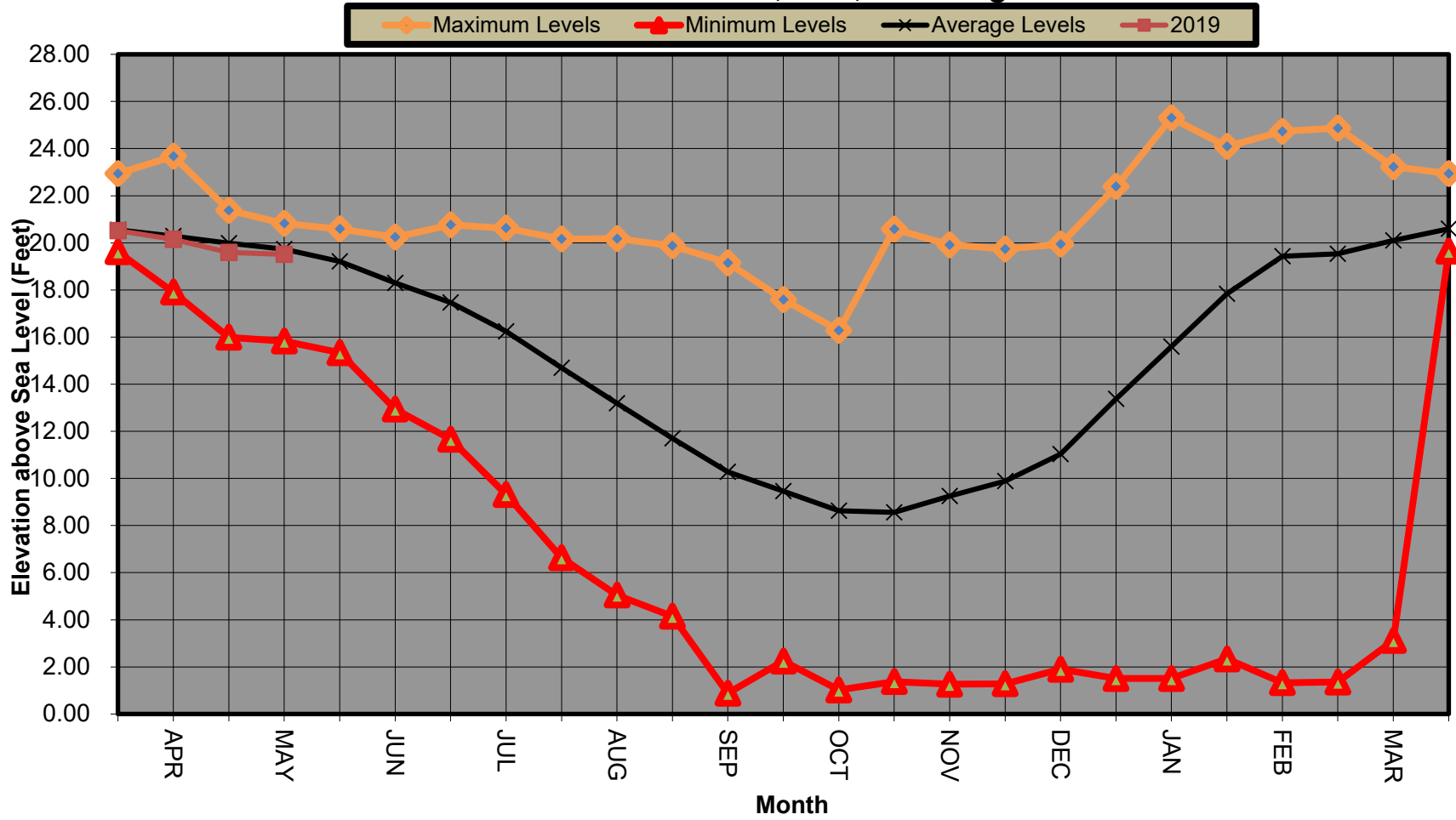


### San Simeon Creek Well Levels 1988 - Current



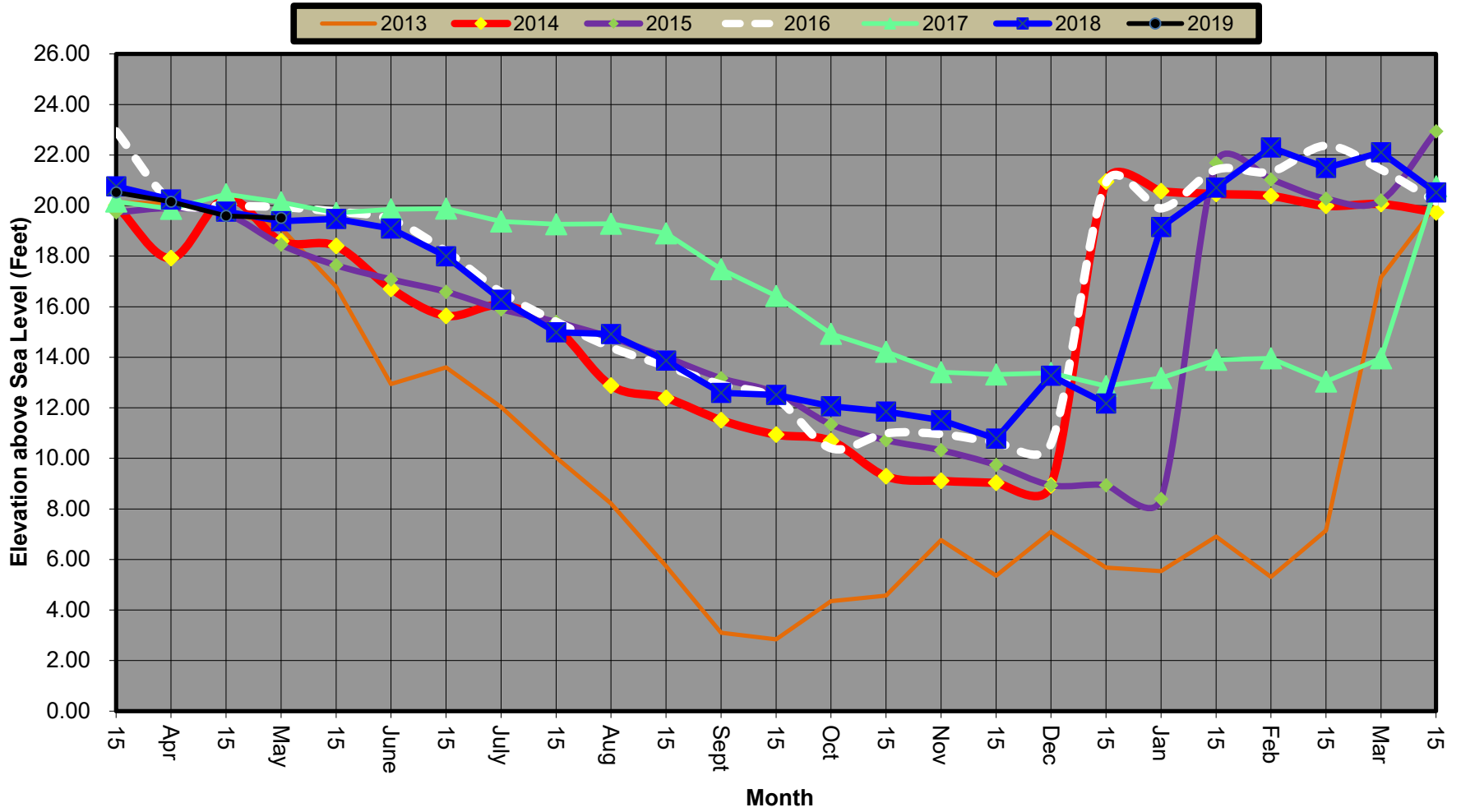
### San Simeon Creek Well Levels Mid-March 2019/2020 levels to date and 1988 to Current Min, Max, & Average



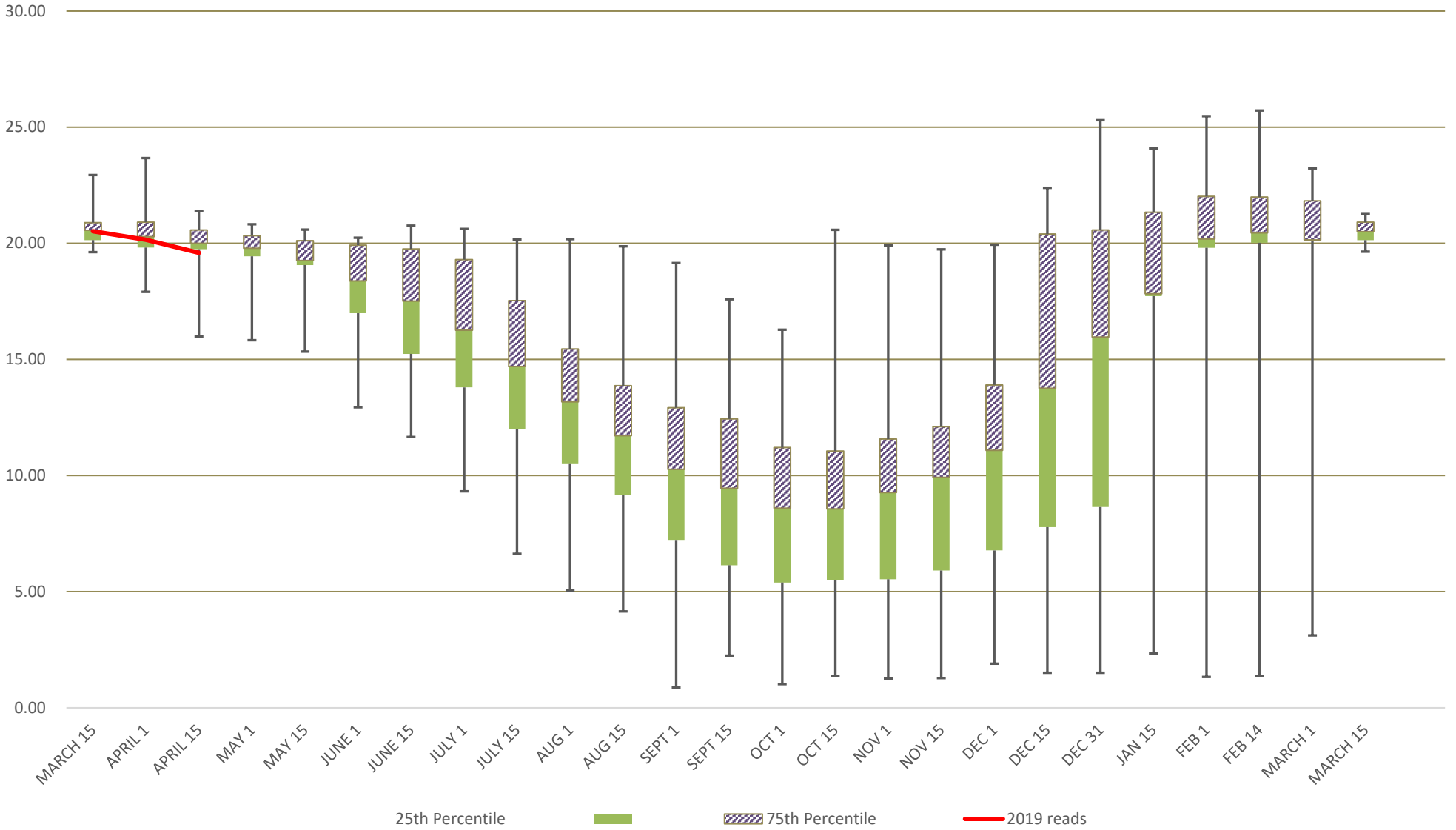
# San Simeon Creek Well Levels

## Last 7 years

March, 2013 - Current

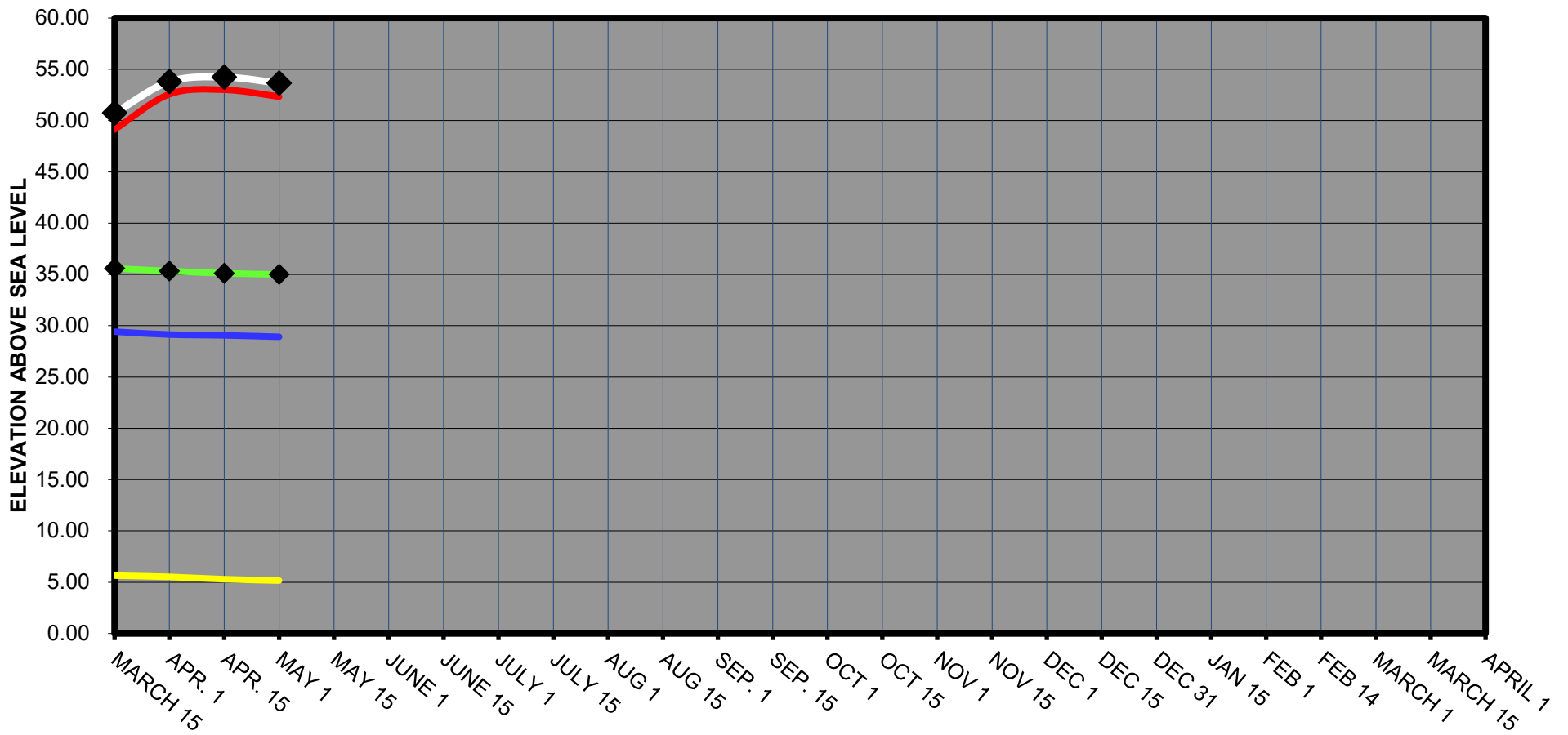
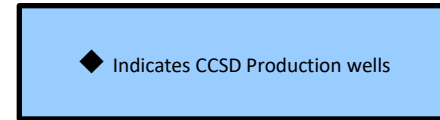


**1988 to Current Statistical San Simeon Well Level Summary by Month**  
 showing Minimums, Maximums, 25 % Percentile, 75% Percentile  
 Average Level is the line between the Purple (hatched) and Green (solid) bars



# SANTA ROSA CREEK WELL LEVELS

## March 15th, 2018 - Current



5/1/2019

CAMBRIA COMMUNITY SERVICES DISTRICT  
WELL WATER LEVELS FOR 5/1/2019

| Well Code | Distance Ref. Point to Water Level | Reference Point Distance Above Sea Level | Depth of Water to Sea Level | Remarks |
|-----------|------------------------------------|------------------------------------------|-----------------------------|---------|
|-----------|------------------------------------|------------------------------------------|-----------------------------|---------|

SANTA ROSA CREEK WELLS

|      |       |       |       |          |
|------|-------|-------|-------|----------|
| 23R  | 31.09 | 83.42 | 52.33 |          |
| SR4  | 28.36 | 82.00 | 53.64 |          |
| SR3  | 19.30 | 54.30 | 35.00 |          |
| SR1  | 17.48 | 46.40 | 28.92 |          |
| RP#1 |       | 46.25 |       | Not Read |
| RP#2 |       | 33.11 |       | Not Read |
| 21R3 | 8.14  | 12.88 | 4.74  | 41796    |
| WBE  | 11.71 | 16.87 | 5.16  |          |
| WBW  | 12.12 | 17.02 | 4.90  |          |

AVERAGE LEVEL OF CCSD SANTA ROSA WELLS SR1 & SR3 = 31.96 FEET  
**CCSD SANTA ROSA WELL SR4 = 53.64 FEET**

SAN SIMEON CREEK WELLS

|        |       |        |       |                                     |
|--------|-------|--------|-------|-------------------------------------|
| 16D1   | 7.55  | 11.36  | 3.81  |                                     |
| MW4    | 11.71 | 15.95  | 4.24  |                                     |
| MW1    | 9.92  | 42.11  | 32.19 |                                     |
| MW2    | 11.85 | 38.10  | 26.25 |                                     |
| MW3    | 14.96 | 49.56  | 34.60 |                                     |
| 9M1    | 17.04 | 65.63  | 48.59 |                                     |
| 9P2    | 10.33 | 19.11  | 8.78  |                                     |
| 9P7    | 11.05 | 20.69  | 9.64  |                                     |
| 9L1    | 15.38 | 27.33  | 11.95 |                                     |
| RIW    | 11.37 | 25.41  | 14.04 |                                     |
| SS4    | 14.62 | 25.92  | 11.30 | <b>SS4 to 9P2 Gradient = + 2.52</b> |
| MIW    | 11.96 | 29.89  | 17.93 |                                     |
| SS3    | 14.60 | 33.73  | 19.13 |                                     |
| SS2    | 13.25 | 33.16  | 19.91 |                                     |
| SS1    | 12.88 | 32.37  | 19.49 |                                     |
| 11B1   | 19.62 | 105.43 | 85.81 |                                     |
| 11C1   | 14.28 | 98.20  | 83.92 |                                     |
| PFNW   | 12.24 | 93.22  | 80.98 |                                     |
| 10A1   | 25.70 | 78.18  | 52.48 |                                     |
| 10G2   | 19.28 | 62.95  | 43.67 |                                     |
| 10G1   | 17.59 | 59.55  | 41.96 |                                     |
| 10F2   | 25.61 | 66.92  | 41.31 |                                     |
| 10M2   | 25.80 | 55.21  | 29.41 |                                     |
| 9J3    | 15.60 | 43.45  | 27.85 |                                     |
| lagoon | 20.70 |        |       | mitigation errosion none            |

AVERAGE LEVEL OF CCSD SAN SIMEON WELLS SS1,SS2 & SS3 = 19.51 FEET

revised 6/6/16

Red Font are the CCSD's Production Wells, as measured on 5/1/2019

Reference point on 16d1,miw1,miw2,miw3,9p7,riw,miw1,ss1,ss2 and ss3 updat 2/17/2015

4/15/2019

CAMBRIA COMMUNITY SERVICES DISTRICT  
WELL WATER LEVELS FOR 4/15/2019

| Well Code                                          | Distance Ref. Point to Water Level | Reference Point Distance Above Sea Level | Depth of Water to Sea Level | Remarks           |
|----------------------------------------------------|------------------------------------|------------------------------------------|-----------------------------|-------------------|
| <b>SANTA ROSA CREEK WELLS</b>                      |                                    |                                          |                             |                   |
| 23R                                                | 30.42                              | 83.42                                    | 53.00                       |                   |
| SR4                                                | 27.76                              | 82.00                                    | 54.24                       |                   |
| SR3                                                | 19.19                              | 54.30                                    | 35.11                       |                   |
| SR1                                                | 17.34                              | 46.40                                    | 29.06                       |                   |
| RP#1                                               |                                    | 46.25                                    |                             | Not Read          |
| RP#2                                               |                                    | 33.11                                    |                             | Not Read          |
| 21R3                                               | 7.98                               | 12.88                                    | 4.90                        | 41768             |
| WBE                                                | 11.58                              | 16.87                                    | 5.29                        |                   |
| WBW                                                |                                    | 17.02                                    |                             | Not Read          |
| AVERAGE LEVEL OF CCSD SANTA ROSA WELLS SR1 & SR3 = |                                    |                                          |                             | 32.09 FEET        |
| <b>CCSD SANTA ROSA WELL SR4 =</b>                  |                                    |                                          |                             | <b>54.24 FEET</b> |

|                                                                   |       |        |       |                                     |
|-------------------------------------------------------------------|-------|--------|-------|-------------------------------------|
| <b>SAN SIMEON CREEK WELLS</b>                                     |       |        |       |                                     |
| 16D1                                                              | 7.21  | 11.36  | 4.15  |                                     |
| MW4                                                               | 11.42 | 15.95  | 4.53  |                                     |
| MW1                                                               |       | 42.11  |       | Not Read                            |
| MW2                                                               |       | 38.10  |       | Not Read                            |
| MW3                                                               |       | 49.56  |       | Not Read                            |
| 9M1                                                               |       | 65.63  |       | Not Read                            |
| 9P2                                                               | 10.14 | 19.11  | 8.97  |                                     |
| 9P7                                                               |       | 20.69  |       | Not Read                            |
| 9L1                                                               | 15.21 | 27.33  | 12.12 |                                     |
| RIW                                                               |       | 25.41  |       | Not Read                            |
| SS4                                                               | 13.83 | 25.92  | 12.09 | <b>SS4 to 9P2 Gradient = + 3.12</b> |
| MIW                                                               |       | 29.89  |       | Not Read                            |
| SS3                                                               | 14.61 | 33.73  | 19.12 |                                     |
| SS2                                                               | 13.16 | 33.16  | 20.00 |                                     |
| SS1                                                               | 12.72 | 32.37  | 19.65 |                                     |
| 11B1                                                              |       | 105.43 |       | Not Read                            |
| 11C1                                                              | 14.03 | 98.20  | 84.17 |                                     |
| PFNW                                                              |       | 93.22  |       | Not Read                            |
| 10A1                                                              |       | 78.18  |       | Not Read                            |
| 10G2                                                              |       | 62.95  |       | Not Read                            |
| 10G1                                                              |       | 59.55  |       | Not Read                            |
| 10F2                                                              |       | 66.92  |       | Not Read                            |
| 10M2                                                              | 22.22 | 55.21  | 32.99 |                                     |
| 9J3                                                               |       | 43.45  |       | Not Read                            |
| lagoon                                                            | 19.55 |        |       | mitigation erosion none             |
| <b>AVERAGE LEVEL OF CCSD SAN SIMEON WELLS SS1,SS2 &amp; SS3 =</b> |       |        |       | <b>19.59 FEET</b>                   |

revised 6/6/16  
 Red Font are the CCSD's Production Wells, as measured on 4/15/2019  
 Reference point on 16d1,miw1,miw2,miw3,9p7,riw,miw1,ss1,ss2 and ss3 updated 2/17/2015

4/1/2019

CAMBRIA COMMUNITY SERVICES DISTRICT  
WELL WATER LEVELS FOR 4/1/2019

| Well Code                                          | Distance Ref. Point to Water Level | Reference Point Distance Above Sea Level | Depth of Water to Sea Level | Remarks           |
|----------------------------------------------------|------------------------------------|------------------------------------------|-----------------------------|-------------------|
| <b>SANTA ROSA CREEK WELLS</b>                      |                                    |                                          |                             |                   |
| 23R                                                | 30.85                              | 83.42                                    | 52.57                       |                   |
| <b>SR4</b>                                         | <b>28.21</b>                       | <b>82.00</b>                             | <b>53.79</b>                |                   |
| SR3                                                | 18.97                              | 54.30                                    | 35.33                       |                   |
| SR1                                                | 17.26                              | 46.40                                    | 29.14                       |                   |
| RP#1                                               |                                    | 46.25                                    |                             | Not Read          |
| RP#2                                               |                                    | 33.11                                    |                             | Not Read          |
| 21R3                                               | 7.79                               | 12.88                                    | 5.09                        | 41768             |
| <b>WBE</b>                                         | 11.35                              | 16.87                                    | <b>5.52</b>                 |                   |
| WBW                                                | 11.80                              | 17.02                                    | 5.22                        |                   |
| AVERAGE LEVEL OF CCSD SANTA ROSA WELLS SR1 & SR3 = |                                    |                                          |                             | 32.24 FEET        |
| <b>CCSD SANTA ROSA WELL SR4 =</b>                  |                                    |                                          |                             | <b>53.79 FEET</b> |

|                                                                 |              |              |              |                                     |
|-----------------------------------------------------------------|--------------|--------------|--------------|-------------------------------------|
| <b>SAN SIMEON CREEK WELLS</b>                                   |              |              |              |                                     |
| 16D1                                                            | 7.64         | 11.36        | 3.72         |                                     |
| MW4                                                             | 11.55        | 15.95        | 4.40         |                                     |
| MW1                                                             | 7.49         | 42.11        | 34.62        |                                     |
| MW2                                                             | 9.70         | 38.10        | 28.40        |                                     |
| MW3                                                             | 13.45        | 49.56        | 36.11        |                                     |
| 9M1                                                             | 15.40        | 65.63        | 50.23        |                                     |
| 9P2                                                             | 9.69         | 19.11        | 9.42         |                                     |
| 9P7                                                             | 9.28         | 20.69        | 11.41        |                                     |
| 9L1                                                             | 14.42        | 27.33        | 12.91        |                                     |
| RIW                                                             | 10.68        | 25.41        | 14.73        |                                     |
| SS4                                                             | 13.28        | 25.92        | 12.64        | <b>SS4 to 9P2 Gradient = + 3.22</b> |
| MIW                                                             | 11.23        | 29.89        | 18.66        |                                     |
| <b>SS3</b>                                                      | <b>13.98</b> | <b>33.73</b> | <b>19.75</b> |                                     |
| <b>SS2</b>                                                      | <b>12.61</b> | <b>33.16</b> | <b>20.55</b> |                                     |
| <b>SS1</b>                                                      | <b>12.23</b> | <b>32.37</b> | <b>20.14</b> |                                     |
| 11B1                                                            | 18.82        | 105.43       | 86.61        |                                     |
| 11C1                                                            | 13.75        | 98.20        | 84.45        |                                     |
| PFNW                                                            | 12.82        | 93.22        | 80.40        |                                     |
| 10A1                                                            | 24.96        | 78.18        | 53.22        |                                     |
| 10G2                                                            | 18.78        | 62.95        | 44.17        |                                     |
| 10G1                                                            | 17.09        | 59.55        | 42.46        |                                     |
| 10F2                                                            | 25.05        | 66.92        | 41.87        |                                     |
| 10M2                                                            | 23.52        | 55.21        | 31.69        |                                     |
| 9J3                                                             | 15.09        | 43.45        | 28.36        |                                     |
| lagoon                                                          | 20.47        |              |              | mitigation erosion none             |
| <b>AVERAGE LEVEL OF CCSD SAN SIMEON WELLS SS1,SS2 &amp; SS3</b> |              |              |              | <b>20.15 FEET</b>                   |

revised 6/6/16

**Red Font are the CCSD's Production Wells, as measured on 4/1/2019**

reference point on 16d1,miw1,miw2,miw3,9p7,riw,miw1,ss1,ss2 and ss3 updat 2/17/2015



3/18/2019

CAMBRIA COMMUNITY SERVICES DISTRICT  
WELL WATER LEVELS FOR 3/18/2019

| Well Code                     | Distance Ref. Point to Water Level | Reference Point Distance Above Sea Level | Depth of Water to Sea Level | Remarks  |
|-------------------------------|------------------------------------|------------------------------------------|-----------------------------|----------|
| <b>SANTA ROSA CREEK WELLS</b> |                                    |                                          |                             |          |
| 23R                           | 34.29                              | 83.42                                    | 49.13                       |          |
| SR4                           | 31.26                              | 82.00                                    | 50.74                       |          |
| SR3                           | 18.72                              | 54.30                                    | 35.58                       |          |
| SR1                           | 16.98                              | 46.40                                    | 29.42                       |          |
| RP#1                          |                                    | 46.25                                    |                             | Not Read |
| RP#2                          |                                    | 33.11                                    |                             | Not Read |
| 21R3                          | 7.74                               | 12.88                                    | 5.14                        | 41768    |
| WBE                           | 11.23                              | 16.87                                    | 5.64                        |          |
| WBW                           |                                    | 17.02                                    |                             | Not Read |

AVERAGE LEVEL OF CCSD SANTA ROSA WELLS SR1 & SR3 = 32.50 FEET  
**CCSD SANTA ROSA WELL SR4 = 50.74 FEET**

|                               |       |        |       |                                     |
|-------------------------------|-------|--------|-------|-------------------------------------|
| <b>SAN SIMEON CREEK WELLS</b> |       |        |       |                                     |
| 16D1                          | 5.66  | 11.36  | 5.70  |                                     |
| MW4                           | 10.10 | 15.95  | 5.85  |                                     |
| MW1                           |       | 42.11  |       | Not Read                            |
| MW2                           |       | 38.10  |       | Not Read                            |
| MW3                           |       | 49.56  |       | Not Read                            |
| 9M1                           |       | 65.63  |       | Not Read                            |
| 9P2                           | 9.48  | 19.11  | 9.63  |                                     |
| 9P7                           |       | 20.69  |       | Not Read                            |
| 9L1                           | 14.51 | 27.33  | 12.82 |                                     |
| RIW                           |       | 25.41  |       | Not Read                            |
| SS4                           | 13.28 | 25.92  | 12.64 | <b>SS4 to 9P2 Gradient = + 3.01</b> |
| MIW                           |       | 29.89  |       | Not Read                            |
| SS3                           | 13.59 | 33.73  | 20.14 |                                     |
| SS2                           | 12.22 | 33.16  | 20.94 |                                     |
| SS1                           | 11.89 | 32.37  | 20.48 |                                     |
| 11B1                          |       | 105.43 |       | Not Read                            |
| 11C1                          | 13.81 | 98.20  | 84.39 |                                     |
| PFNW                          |       | 93.22  |       | Not Read                            |
| 10A1                          |       | 78.18  |       | Not Read                            |
| 10G2                          |       | 62.95  |       | Not Read                            |
| 10G1                          |       | 59.55  |       | Not Read                            |
| 10F2                          |       | 66.92  |       | Not Read                            |
| 10M2                          | 22.30 | 55.21  | 32.91 |                                     |
| 9J3                           |       | 43.45  |       | Not Read                            |
| lagoon                        | 17.11 |        |       | mitigation erosion none             |

**AVERAGE LEVEL OF CCSD SAN SIMEON WELLS SS1,SS2 & SS 20.52 FEET**

revised 6/6/16

**Red Font are the CCSD's Production Wells, as measured on 3/18/2019**

reference point on 16d1,miw1,miw2,miw3,9p7,riw,miw1,ss1,ss2 and ss3 updat 2/17/2015

3/4/2019

CAMBRIA COMMUNITY SERVICES DISTRICT  
WELL WATER LEVELS FOR 3/4/2019

| Well Code                                          | Distance Ref. Point to Water Level | Reference Point Distance Above Sea Level | Depth of Water to Sea Level | Remarks           |
|----------------------------------------------------|------------------------------------|------------------------------------------|-----------------------------|-------------------|
| <b>SANTA ROSA CREEK WELLS</b>                      |                                    |                                          |                             |                   |
| 23R                                                | 29.41                              | 83.42                                    | 54.01                       |                   |
| <b>SR4</b>                                         | <b>26.67</b>                       | <b>82.00</b>                             | <b>55.33</b>                |                   |
| SR3                                                | 17.65                              | 54.30                                    | 36.65                       |                   |
| SR1                                                | 15.87                              | 46.40                                    | 30.53                       |                   |
| RP#1                                               |                                    | 46.25                                    |                             | Not Read          |
| RP#2                                               |                                    | 33.11                                    |                             | Not Read          |
| 21R3                                               | 7.05                               | 12.88                                    | 5.83                        | 41767             |
| <b>WBE</b>                                         | 10.61                              | 16.87                                    | <b>6.26</b>                 |                   |
| WBW                                                | 11.01                              | 17.02                                    | 6.01                        |                   |
| AVERAGE LEVEL OF CCSD SANTA ROSA WELLS SR1 & SR3 = |                                    |                                          |                             | 33.59 FEET        |
| <b>CCSD SANTA ROSA WELL SR4 =</b>                  |                                    |                                          |                             | <b>55.33 FEET</b> |

|                                                                |              |              |              |                                     |
|----------------------------------------------------------------|--------------|--------------|--------------|-------------------------------------|
| <b>SAN SIMEON CREEK WELLS</b>                                  |              |              |              |                                     |
| 16D1                                                           | 6.30         | 11.36        | 5.06         |                                     |
| MW4                                                            | 10.13        | 15.95        | 5.82         |                                     |
| MW1                                                            | 7.05         | 42.11        | 35.06        |                                     |
| MW2                                                            | 9.40         | 38.10        | 28.70        |                                     |
| MW3                                                            | 12.17        | 49.56        | 37.39        |                                     |
| 9M1                                                            | 17.51        | 65.63        | 48.12        |                                     |
| 9P2                                                            | 7.83         | 19.11        | 11.28        |                                     |
| 9P7                                                            | 8.64         | 20.69        | 12.05        |                                     |
| 9L1                                                            | 12.57        | 27.33        | 14.76        |                                     |
| RIW                                                            | 8.47         | 25.41        | 16.94        |                                     |
| SS4                                                            | 11.58        | 25.92        | 14.34        | <b>SS4 to 9P2 Gradient = + 3.06</b> |
| MIW                                                            | 8.92         | 29.89        | 20.97        |                                     |
| <b>SS3</b>                                                     | <b>11.78</b> | <b>33.73</b> | <b>21.95</b> |                                     |
| <b>SS2</b>                                                     | <b>10.70</b> | <b>33.16</b> | <b>22.46</b> |                                     |
| <b>SS1</b>                                                     | <b>10.46</b> | <b>32.37</b> | <b>21.91</b> |                                     |
| 11B1                                                           | 16.94        | 105.43       | 88.49        |                                     |
| 11C1                                                           | 11.90        | 98.20        | 86.30        |                                     |
| PFNW                                                           | 11.16        | 93.22        | 82.06        |                                     |
| 10A1                                                           | 22.12        | 78.18        | 56.06        |                                     |
| 10G2                                                           | 17.35        | 62.95        | 45.60        |                                     |
| 10G1                                                           | 15.61        | 59.55        | 43.94        |                                     |
| 10F2                                                           | 23.43        | 66.92        | 43.49        |                                     |
| 10M2                                                           | 21.15        | 55.21        | 34.06        |                                     |
| 9J3                                                            | 13.66        | 43.45        | 29.79        |                                     |
| lagoon                                                         | 19.54        |              |              | mitigation erosion none             |
| <b>AVERAGE LEVEL OF CCSD SAN SIMEON WELLS SS1,SS2 &amp; SS</b> |              |              |              | <b>22.11 FEET</b>                   |

revised 6/6/16

**Red Font are the CCSD's Production Wells, as measured on 3/4/2019**

reference point on 16d1,miw1,miw2,miw3,9p7,riw,miw1,ss1,ss2 and ss3 updat 2/17/2015

2/19/2019

CAMBRIA COMMUNITY SERVICES DISTRICT  
WELL WATER LEVELS FOR 2/19/2019

| Well Code                                          | Distance Ref. Point to Water Level | Reference Point Distance Above Sea Level | Depth of Water to Sea Level | Remarks           |
|----------------------------------------------------|------------------------------------|------------------------------------------|-----------------------------|-------------------|
| <b>SANTA ROSA CREEK WELLS</b>                      |                                    |                                          |                             |                   |
| 23R                                                | 30.31                              | 83.42                                    | 53.11                       |                   |
| <b>SR4</b>                                         | <b>27.69</b>                       | <b>82.00</b>                             | <b>54.31</b>                |                   |
| SR3                                                | 18.24                              | 54.30                                    | 36.06                       |                   |
| SR1                                                | 16.30                              | 46.40                                    | 30.10                       |                   |
| RP#1                                               |                                    | 46.25                                    |                             | Not Read          |
| RP#2                                               |                                    | 33.11                                    |                             | Not Read          |
| 21R3                                               | 7.19                               | 12.88                                    | 5.69                        | 41767             |
| <b>WBE</b>                                         | 10.76                              | 16.87                                    | <b>6.11</b>                 |                   |
| WBW                                                |                                    | 17.02                                    |                             | Not Read          |
| AVERAGE LEVEL OF CCSD SANTA ROSA WELLS SR1 & SR3 = |                                    |                                          |                             | 33.08 FEET        |
| <b>CCSD SANTA ROSA WELL SR4 =</b>                  |                                    |                                          |                             | <b>54.31 FEET</b> |

|                                                                |              |              |              |                                     |
|----------------------------------------------------------------|--------------|--------------|--------------|-------------------------------------|
| <b>SAN SIMEON CREEK WELLS</b>                                  |              |              |              |                                     |
| 16D1                                                           | 6.52         | 11.36        | 4.84         |                                     |
| MW4                                                            | 10.50        | 15.95        | 5.45         |                                     |
| MW1                                                            |              | 42.11        |              | Not Read                            |
| MW2                                                            |              | 38.10        |              | Not Read                            |
| MW3                                                            |              | 49.56        |              | Not Read                            |
| 9M1                                                            |              | 65.63        |              | Not Read                            |
| 9P2                                                            | 8.44         | 19.11        | 10.67        |                                     |
| 9P7                                                            |              | 20.69        |              | Not Read                            |
| 9L1                                                            |              | 27.33        |              | Not Read                            |
| RIW                                                            |              | 25.41        |              | Not Read                            |
| SS4                                                            | 12.41        | 25.92        | 13.51        | <b>SS4 to 9P2 Gradient = + 2.84</b> |
| MIW                                                            |              | 29.89        |              | Not Read                            |
| <b>SS3</b>                                                     | <b>12.48</b> | <b>33.73</b> | <b>21.25</b> |                                     |
| <b>SS2</b>                                                     | <b>11.31</b> | <b>33.16</b> | <b>21.85</b> |                                     |
| <b>SS1</b>                                                     | <b>11.00</b> | <b>32.37</b> | <b>21.37</b> |                                     |
| 11B1                                                           |              | 105.43       |              | Not Read                            |
| 11C1                                                           | 12.62        | 98.20        | 85.58        |                                     |
| PFNW                                                           |              | 93.22        |              | Not Read                            |
| 10A1                                                           |              | 78.18        |              | Not Read                            |
| 10G2                                                           |              | 62.95        |              | Not Read                            |
| 10G1                                                           |              | 59.55        |              | Not Read                            |
| 10F2                                                           |              | 66.92        |              | Not Read                            |
| 10M2                                                           | 21.72        | 55.21        | 33.49        |                                     |
| 9J3                                                            |              | 43.45        |              | Not Read                            |
| lagoon                                                         | 19.31        |              |              | mitigation erosion none             |
| <b>AVERAGE LEVEL OF CCSD SAN SIMEON WELLS SS1,SS2 &amp; SS</b> |              |              |              | <b>21.49 FEET</b>                   |

revised 6/6/16

**Red Font are the CCSD's Production Wells, as measured on 2/19/2019**

reference point on 16d1,miw1,miw2,miw3,9p7,riw,miw1,ss1,ss2 and ss3 updat 2/17/2015

2/6/2019

CAMBRIA COMMUNITY SERVICES DISTRICT  
WELL WATER LEVELS FOR 2/6/2019

| Well Code                                          | Distance Ref. Point to Water Level | Reference Point Distance Above Sea Level | Depth of Water to Sea Level | Remarks           |
|----------------------------------------------------|------------------------------------|------------------------------------------|-----------------------------|-------------------|
| <b>SANTA ROSA CREEK WELLS</b>                      |                                    |                                          |                             |                   |
| 23R                                                | 29.30                              | 83.42                                    | 54.12                       |                   |
| <b>SR4</b>                                         | <b>26.66</b>                       | <b>82.00</b>                             | <b>55.34</b>                |                   |
| SR3                                                | 18.20                              | 54.30                                    | 36.10                       |                   |
| SR1                                                | 16.20                              | 46.40                                    | 30.20                       |                   |
| RP#1                                               |                                    | 46.25                                    |                             | Not Read          |
| RP#2                                               |                                    | 33.11                                    |                             | Not Read          |
| 21R3                                               | 7.19                               | 12.88                                    | 5.69                        | 41767             |
| <b>WBE</b>                                         | <b>10.81</b>                       | <b>16.87</b>                             | <b>6.06</b>                 |                   |
| WBW                                                | 11.35                              | 17.02                                    | 5.67                        |                   |
| AVERAGE LEVEL OF CCSD SANTA ROSA WELLS SR1 & SR3 = |                                    |                                          |                             | 33.15 FEET        |
| <b>CCSD SANTA ROSA WELL SR4 =</b>                  |                                    |                                          |                             | <b>55.34 FEET</b> |

|                                                                |              |              |              |                                     |
|----------------------------------------------------------------|--------------|--------------|--------------|-------------------------------------|
| <b>SAN SIMEON CREEK WELLS</b>                                  |              |              |              |                                     |
| 16D1                                                           | 5.87         | 11.36        | 5.49         |                                     |
| MW4                                                            | 9.78         | 15.95        | 6.17         |                                     |
| MW1                                                            | 9.78         | 42.11        | 32.33        |                                     |
| MW2                                                            | 9.66         | 38.10        | 28.44        |                                     |
| MW3                                                            | 14.85        | 49.56        | 34.71        |                                     |
| 9M1                                                            | 22.25        | 65.63        | 43.38        |                                     |
| 9P2                                                            | 7.55         | 19.11        | 11.56        |                                     |
| 9P7                                                            | 8.02         | 20.69        | 12.67        |                                     |
| 9L1                                                            | 12.54        | 27.33        | 14.79        |                                     |
| RIW                                                            | 8.32         | 25.41        | 17.09        |                                     |
| SS4                                                            | 11.71        | 25.92        | 14.21        | <b>SS4 to 9P2 Gradient = + 2.65</b> |
| MIW                                                            | 8.61         | 29.89        | 21.28        |                                     |
| <b>SS3</b>                                                     | <b>11.49</b> | <b>33.73</b> | <b>22.24</b> |                                     |
| <b>SS2</b>                                                     | <b>10.52</b> | <b>33.16</b> | <b>22.64</b> |                                     |
| <b>SS1</b>                                                     | <b>10.35</b> | <b>32.37</b> | <b>22.02</b> |                                     |
| 11B1                                                           | 17.10        | 105.43       | 88.33        |                                     |
| 11C1                                                           | 12.07        | 98.20        | 86.13        |                                     |
| PFNW                                                           | 11.34        | 93.22        | 81.88        |                                     |
| 10A1                                                           | 20.92        | 78.18        | 57.26        |                                     |
| 10G2                                                           | 17.62        | 62.95        | 45.33        |                                     |
| 10G1                                                           | 15.97        | 59.55        | 43.58        |                                     |
| 10F2                                                           | 23.82        | 66.92        | 43.10        |                                     |
| 10M2                                                           | 20.67        | 55.21        | 34.54        |                                     |
| 9J3                                                            | 13.90        | 43.45        | 29.55        |                                     |
| lagoon                                                         | 18.67        |              |              | mitigation erosion none             |
| <b>AVERAGE LEVEL OF CCSD SAN SIMEON WELLS SS1,SS2 &amp; SS</b> |              |              |              | <b>22.30 FEET</b>                   |

revised 6/6/16

**Red Font are the CCSD's Production Wells, as measured on 2/6/2019**

reference point on 16d1,miw1,miw2,miw3,9p7,riw,miw1,ss1,ss2 and ss3 updat 2/17/2015

1/14/2019

CAMBRIA COMMUNITY SERVICES DISTRICT  
WELL WATER LEVELS FOR 1/14/2019

| Well Code                                          | Distance Ref. Point to Water Level | Reference Point Distance Above Sea Level | Depth of Water to Sea Level | Remarks           |
|----------------------------------------------------|------------------------------------|------------------------------------------|-----------------------------|-------------------|
| <b>SANTA ROSA CREEK WELLS</b>                      |                                    |                                          |                             |                   |
| 23R                                                | 30.14                              | 83.42                                    | 53.28                       |                   |
| <b>SR4</b>                                         | <b>27.60</b>                       | <b>82.00</b>                             | <b>54.40</b>                |                   |
| SR3                                                | 19.29                              | 54.30                                    | 35.01                       |                   |
| SR1                                                | 17.10                              | 46.40                                    | 29.30                       |                   |
| RP#1                                               |                                    | 46.25                                    |                             |                   |
| RP#2                                               |                                    | 33.11                                    |                             | Not Read          |
| 21R3                                               | 7.00                               | 12.88                                    | 5.88                        | 41767             |
| <b>WBE</b>                                         | 10.45                              | 16.87                                    | <b>6.42</b>                 |                   |
| WBW                                                |                                    | 17.02                                    |                             | Not Read          |
| AVERAGE LEVEL OF CCSD SANTA ROSA WELLS SR1 & SR3 = |                                    |                                          |                             | 32.16 FEET        |
| <b>CCSD SANTA ROSA WELL SR4 =</b>                  |                                    |                                          |                             | <b>54.40 FEET</b> |

|                                                                |              |              |              |                                     |
|----------------------------------------------------------------|--------------|--------------|--------------|-------------------------------------|
| <b>SAN SIMEON CREEK WELLS</b>                                  |              |              |              |                                     |
| 16D1                                                           | 6.61         | 11.36        | 4.75         |                                     |
| MW4                                                            | 10.87        | 15.95        | 5.08         |                                     |
| MW1                                                            |              | 42.11        |              | Not Read                            |
| MW2                                                            |              | 38.10        |              | Not Read                            |
| MW3                                                            |              | 49.56        |              | Not Read                            |
| 9M1                                                            |              | 65.63        |              | Not Read                            |
| 9P2                                                            | 9.21         | 19.11        | 9.90         |                                     |
| 9P7                                                            |              | 20.69        |              | Not Read                            |
| 9L1                                                            | 14.06        | 27.33        | 13.27        |                                     |
| RIW                                                            |              | 25.41        |              | Not Read                            |
| SS4                                                            | 12.92        | 25.92        | 13.00        | <b>SS4 to 9P2 Gradient = + 3.10</b> |
| MIW                                                            |              | 29.89        |              | Not Read                            |
| <b>SS3</b>                                                     | <b>13.42</b> | <b>33.73</b> | <b>20.31</b> |                                     |
| <b>SS2</b>                                                     | <b>12.05</b> | <b>33.16</b> | <b>21.11</b> |                                     |
| <b>SS1</b>                                                     | <b>11.65</b> | <b>32.37</b> | <b>20.72</b> |                                     |
| 11B1                                                           |              | 105.43       |              | Not Read                            |
| 11C1                                                           | 12.68        | 98.20        | 85.52        |                                     |
| PFNW                                                           |              | 93.22        |              | Not Read                            |
| 10A1                                                           |              | 78.18        |              | Not Read                            |
| 10G2                                                           |              | 62.95        |              | Not Read                            |
| 10G1                                                           |              | 59.55        |              | Not Read                            |
| 10F2                                                           |              | 66.92        |              | Not Read                            |
| 10M2                                                           | 22.20        | 55.21        | 33.01        |                                     |
| 9J3                                                            |              | 43.45        |              | Not Read                            |
| lagoon                                                         | 19.08        |              |              | mitigation erosion none             |
| <b>AVERAGE LEVEL OF CCSD SAN SIMEON WELLS SS1,SS2 &amp; SS</b> |              |              |              | <b>20.71 FEET</b>                   |

revised 6/6/16

**Red Font are the CCSD's Production Wells, as measured on 1/14/2019**

reference point on 16d1,miw1,miw2,miw3,9p7,riw,miw1,ss1,ss2 and ss3 updat 2/17/2015

CAMBRIA COMMUNITY SERVICES DISTRICT  
WELL WATER LEVELS FOR 03-Jan-19

| Well Code                                          | Distance Ref. Point to Water Level | Reference Point Distance Above Sea Level | Depth of Water to Sea Level | Remarks           |
|----------------------------------------------------|------------------------------------|------------------------------------------|-----------------------------|-------------------|
| <b>SANTA ROSA CREEK WELLS</b>                      |                                    |                                          |                             |                   |
| 23R                                                | 30.91                              | 83.42                                    | 52.51                       |                   |
| <b>SR4</b>                                         | <b>28.22</b>                       | <b>82.00</b>                             | <b>53.78</b>                |                   |
| SR3                                                | 19.96                              | 54.30                                    | 34.34                       |                   |
| SR1                                                | 18.01                              | 46.40                                    | 28.39                       |                   |
| RP#1                                               |                                    | 46.25                                    |                             | Not Read          |
| RP#2                                               |                                    | 33.11                                    |                             | Not Read          |
| 21R3                                               | 7.15                               | 12.88                                    | 5.73                        | 41767             |
| <b>WBE</b>                                         | 11.08                              | 16.87                                    | <b>5.79</b>                 |                   |
| WBW                                                | 11.30                              | 17.02                                    | 5.72                        |                   |
| AVERAGE LEVEL OF CCSD SANTA ROSA WELLS SR1 & SR3 = |                                    |                                          |                             | 31.37 FEET        |
| <b>CCSD SANTA ROSA WELL SR4 =</b>                  |                                    |                                          |                             | <b>53.78 FEET</b> |

|                                                                |              |              |              |                                     |
|----------------------------------------------------------------|--------------|--------------|--------------|-------------------------------------|
| <b>SAN SIMEON CREEK WELLS</b>                                  |              |              |              |                                     |
| 16D1                                                           | 6.00         | 11.36        | 5.36         |                                     |
| MW4                                                            | 10.40        | 15.95        | 5.55         |                                     |
| MW1                                                            | 20.29        | 42.11        | 21.82        |                                     |
| MW2                                                            | 19.35        | 38.10        | 18.75        |                                     |
| MW3                                                            | 25.67        | 49.56        | 23.89        |                                     |
| 9M1                                                            | 27.88        | 65.63        | 37.75        |                                     |
| 9P2                                                            | 10.54        | 19.11        | 8.57         |                                     |
| 9P7                                                            | 12.10        | 20.69        | 8.59         |                                     |
| 9L1                                                            | 15.92        | 30.50        | 14.58        |                                     |
| RIW                                                            | 11.91        | 25.41        | 13.50        |                                     |
| SS4                                                            | 14.45        | 25.92        | 11.47        | <b>SS4 to 9P2 Gradient = + 2.90</b> |
| MIW                                                            | 12.47        | 29.89        | 17.42        |                                     |
| <b>SS3</b>                                                     | <b>15.15</b> | <b>33.73</b> | <b>18.58</b> |                                     |
| <b>SS2</b>                                                     | <b>13.60</b> | <b>33.16</b> | <b>19.56</b> |                                     |
| <b>SS1</b>                                                     | <b>13.07</b> | <b>32.37</b> | <b>19.30</b> |                                     |
| 11B1                                                           | 19.49        | 105.43       | 85.94        |                                     |
| 11C1                                                           | 14.39        | 98.20        | 83.81        |                                     |
| PFNW                                                           | 13.20        | 93.22        | 80.02        |                                     |
| 10A1                                                           | 26.38        | 78.18        | 51.80        |                                     |
| 10G2                                                           | 19.69        | 62.95        | 43.26        |                                     |
| 10G1                                                           | 18.00        | 59.55        | 41.55        |                                     |
| 10F2                                                           | 26.10        | 66.92        | 40.82        |                                     |
| 10M2                                                           | 22.90        | 55.21        | 32.31        |                                     |
| 9J3                                                            | 16.08        | 43.45        | 27.37        |                                     |
| lagoon                                                         | 18.33        |              |              | mitigation erosion none             |
| <b>AVERAGE LEVEL OF CCSD SAN SIMEON WELLS SS1,SS2 &amp; SS</b> |              |              |              | <b>19.15 FEET</b>                   |

revised 6/6/16

**Red Font are the CCSD's Production Wells, as measured on 03-Jan-19**  
 reference point on 16d1,miw1,miw2,miw3,9p7,riw,miw1,ss1,ss2 and ss3 updat 2/17/2015

CAMBRIA COMMUNITY SERVICES DISTRICT  
WELL WATER LEVELS FOR 15-Dec-19

| Well Code                                          | Distance Ref. Point to Water Level | Reference Point Distance Above Sea Level | Depth of Water to Sea Level | Remarks           |
|----------------------------------------------------|------------------------------------|------------------------------------------|-----------------------------|-------------------|
| <b>SANTA ROSA CREEK WELLS</b>                      |                                    |                                          |                             |                   |
| 23R                                                | 30.94                              | 83.42                                    | 52.48                       |                   |
| <b>SR4</b>                                         | <b>28.24</b>                       | <b>82.00</b>                             | <b>53.76</b>                |                   |
| SR3                                                | 19.84                              | 54.30                                    | 34.46                       |                   |
| SR1                                                | 17.87                              | 46.40                                    | 28.53                       |                   |
| RP#1                                               |                                    | 46.25                                    |                             | Not Read          |
| RP#2                                               |                                    | 33.11                                    |                             | Not Read          |
| 21R3                                               | 7.43                               | 12.88                                    | 5.45                        | 41767             |
| <b>WBE</b>                                         | 11.28                              | 16.87                                    | <b>5.59</b>                 |                   |
| WBW                                                |                                    | 17.02                                    |                             | Not Read          |
| AVERAGE LEVEL OF CCSD SANTA ROSA WELLS SR1 & SR3 = |                                    |                                          |                             | 31.50 FEET        |
| <b>CCSD SANTA ROSA WELL SR4 =</b>                  |                                    |                                          |                             | <b>53.76 FEET</b> |

|                                                                |              |              |              |                                     |
|----------------------------------------------------------------|--------------|--------------|--------------|-------------------------------------|
| <b>SAN SIMEON CREEK WELLS</b>                                  |              |              |              |                                     |
| 16D1                                                           | 5.68         | 11.36        | 5.68         |                                     |
| MW4                                                            | 10.13        | 15.95        | 5.82         |                                     |
| MW1                                                            |              | 42.11        |              | Not Read                            |
| MW2                                                            |              | 38.10        |              | Not Read                            |
| MW3                                                            |              | 49.56        |              | Not Read                            |
| 9M1                                                            |              | 65.63        |              | Not Read                            |
| 9P2                                                            | 11.89        | 19.11        | 7.22         |                                     |
| 9P7                                                            |              | 20.69        |              | Not Read                            |
| 9L1                                                            | 20.58        | 30.50        | 9.92         |                                     |
| RIW                                                            |              | 25.41        |              | Not Read                            |
| SS4                                                            | 17.22        | 25.92        | 8.70         | <b>SS4 to 9P2 Gradient = + 1.48</b> |
| MIW                                                            |              | 29.89        |              | Not Read                            |
| <b>SS3</b>                                                     | <b>21.70</b> | <b>33.73</b> | <b>12.03</b> |                                     |
| <b>SS2</b>                                                     | <b>20.70</b> | <b>33.16</b> | <b>12.46</b> |                                     |
| <b>SS1</b>                                                     | <b>20.34</b> | <b>32.37</b> | <b>12.03</b> |                                     |
| 11B1                                                           |              | 105.43       |              | Not Read                            |
| 11C1                                                           | 13.96        | 98.20        | 84.24        |                                     |
| PFNW                                                           |              | 93.22        |              | Not Read                            |
| 10A1                                                           |              | 78.18        |              | Not Read                            |
| 10G2                                                           |              | 62.95        |              | Not Read                            |
| 10G1                                                           |              | 59.55        |              | Not Read                            |
| 10F2                                                           |              | 66.92        |              | Not Read                            |
| 10M2                                                           | 28.60        | 55.21        | 26.61        |                                     |
| 9J3                                                            |              | 43.45        |              | Not Read                            |
| lagoon                                                         | 18.36        |              |              | mitigation erosion none             |
| <b>AVERAGE LEVEL OF CCSD SAN SIMEON WELLS SS1,SS2 &amp; SS</b> |              |              |              | <b>12.17 FEET</b>                   |

revised 6/6/16

**Red Font are the CCSD's Production Wells, as measured on** 15-Dec-18  
reference point on 16d1,miw1,miw2,miw3,9p7,riw,miw1,ss1,ss2 and ss3 updat 2/17/2015

CAMBRIA COMMUNITY SERVICES DISTRICT  
WELL WATER LEVELS FOR 03-Dec-18

| Well Code                                          | Distance Ref. Point to Water Level | Reference Point Distance Above Sea Level | Depth of Water to Sea Level | Remarks           |
|----------------------------------------------------|------------------------------------|------------------------------------------|-----------------------------|-------------------|
| <b>SANTA ROSA CREEK WELLS</b>                      |                                    |                                          |                             |                   |
| 23R                                                | 32.17                              | 83.42                                    | 51.25                       |                   |
| <b>SR4</b>                                         | <b>29.46</b>                       | <b>82.00</b>                             | <b>52.54</b>                |                   |
| SR3                                                | 20.08                              | 54.30                                    | 34.22                       |                   |
| SR1                                                | 18.16                              | 46.40                                    | 28.24                       |                   |
| RP#1                                               |                                    | 46.25                                    |                             | Not Read          |
| RP#2                                               |                                    | 33.11                                    |                             | Not Read          |
| 21R3                                               | 7.87                               | 12.88                                    | 5.01                        | 41767             |
| <b>WBE</b>                                         | <b>11.77</b>                       | <b>16.87</b>                             | <b>5.10</b>                 |                   |
| WBW                                                | 12.01                              | 17.02                                    | 5.01                        |                   |
| AVERAGE LEVEL OF CCSD SANTA ROSA WELLS SR1 & SR3 = |                                    |                                          |                             | 31.23 FEET        |
| <b>CCSD SANTA ROSA WELL SR4 =</b>                  |                                    |                                          |                             | <b>52.54 FEET</b> |

|                                                                |              |              |              |                                     |
|----------------------------------------------------------------|--------------|--------------|--------------|-------------------------------------|
| <b>SAN SIMEON CREEK WELLS</b>                                  |              |              |              |                                     |
| 16D1                                                           | 6.35         | 11.36        | 5.01         |                                     |
| MW4                                                            | 10.91        | 15.95        | 5.04         |                                     |
| MW1                                                            | 19.92        | 42.11        | 22.19        |                                     |
| MW2                                                            | 19.09        | 38.10        | 19.01        |                                     |
| MW3                                                            | 25.35        | 49.56        | 24.21        |                                     |
| 9M1                                                            | 27.62        | 65.63        | 38.01        |                                     |
| 9P2                                                            | 11.95        | 19.11        | 7.16         |                                     |
| 9P7                                                            | 13.40        | 20.69        | 7.29         |                                     |
| 9L1                                                            | 19.73        | 30.50        | 10.77        |                                     |
| RIW                                                            | 16.00        | 25.41        | 9.41         |                                     |
| SS4                                                            | 16.85        | 25.92        | 9.07         | <b>SS4 to 9P2 Gradient = + 1.91</b> |
| MIW                                                            | 17.35        | 29.89        | 12.54        |                                     |
| <b>SS3</b>                                                     | <b>20.50</b> | <b>33.73</b> | <b>13.23</b> |                                     |
| <b>SS2</b>                                                     | <b>19.66</b> | <b>33.16</b> | <b>13.50</b> |                                     |
| <b>SS1</b>                                                     | <b>19.30</b> | <b>32.37</b> | <b>13.07</b> |                                     |
| 11B1                                                           | 27.03        | 105.43       | 78.40        |                                     |
| 11C1                                                           | 22.11        | 98.20        | 76.09        |                                     |
| PFNW                                                           | 20.89        | 93.22        | 72.33        |                                     |
| 10A1                                                           | 34.60        | 78.18        | 43.58        |                                     |
| 10G2                                                           | 25.98        | 62.95        | 36.97        |                                     |
| 10G1                                                           | 23.99        | 59.55        | 35.56        |                                     |
| 10F2                                                           | 32.10        | 66.92        | 34.82        |                                     |
| 10M2                                                           | 29.50        | 55.21        | 25.71        |                                     |
| 9J3                                                            | 21.98        | 43.45        | 21.47        |                                     |
| lagoon                                                         | 18.36        |              |              | mitigation erosion none             |
| <b>AVERAGE LEVEL OF CCSD SAN SIMEON WELLS SS1,SS2 &amp; SS</b> |              |              |              | <b>13.27 FEET</b>                   |

revised 6/6/16

**Red Font are the CCSD's Production Wells, as measured on** 03-Dec-18  
reference point on 16d1,miw1,miw2,miw3,9p7,riw,miw1,ss1,ss2 and ss3 updat 2/17/2015



CAMBRIA COMMUNITY SERVICES DISTRICT  
WELL WATER LEVELS FOR 19-Nov-18

| Well Code                                          | Distance Ref. Point to Water Level | Reference Point Distance Above Sea Level | Depth of Water to Sea Level | Remarks           |
|----------------------------------------------------|------------------------------------|------------------------------------------|-----------------------------|-------------------|
| <b>SANTA ROSA CREEK WELLS</b>                      |                                    |                                          |                             |                   |
| 23R                                                | 34.95                              | 83.42                                    | 48.47                       |                   |
| <b>SR4</b>                                         | <b>32.12</b>                       | <b>82.00</b>                             | <b>49.88</b>                |                   |
| SR3                                                | 23.51                              | 54.30                                    | 30.79                       |                   |
| SR1                                                | 19.93                              | 46.40                                    | 26.47                       |                   |
| RP#1                                               |                                    | 46.25                                    |                             | Not Read          |
| RP#2                                               |                                    | 33.11                                    |                             | Not Read          |
| 21R3                                               | 9.84                               | 12.88                                    | 3.04                        | 41767             |
| <b>WBE</b>                                         | 13.59                              | 16.87                                    | <b>3.28</b>                 |                   |
| WBW                                                |                                    | 17.02                                    |                             | Not Read          |
| AVERAGE LEVEL OF CCSD SANTA ROSA WELLS SR1 & SR3 = |                                    |                                          |                             | 28.63 FEET        |
| <b>CCSD SANTA ROSA WELL SR4 =</b>                  |                                    |                                          |                             | <b>49.88 FEET</b> |

|                                                                |              |              |              |                                     |
|----------------------------------------------------------------|--------------|--------------|--------------|-------------------------------------|
| <b>SAN SIMEON CREEK WELLS</b>                                  |              |              |              |                                     |
| 16D1                                                           | 7.99         | 11.36        | 3.37         |                                     |
| MW4                                                            | 12.44        | 15.95        | 3.51         |                                     |
| MW1                                                            |              | 42.11        |              | Not Read                            |
| MW2                                                            |              | 38.10        |              | Not Read                            |
| MW3                                                            |              | 49.56        |              | Not Read                            |
| 9M1                                                            |              | 65.63        |              | Not Read                            |
| 9P2                                                            | 13.09        | 19.11        | 6.02         |                                     |
| 9P7                                                            |              | 20.69        |              | Not Read                            |
| 9L1                                                            | 21.37        | 30.50        | 9.13         |                                     |
| RIW                                                            |              | 25.41        |              | Not Read                            |
| SS4                                                            | 18.20        | 25.92        | 7.72         | <b>SS4 to 9P2 Gradient = + 1.70</b> |
| MIW                                                            |              | 29.89        |              | Not Read                            |
| <b>SS3</b>                                                     | <b>22.67</b> | <b>33.73</b> | <b>11.06</b> |                                     |
| <b>SS2</b>                                                     | <b>22.30</b> | <b>33.16</b> | <b>10.86</b> |                                     |
| <b>SS1</b>                                                     | <b>21.95</b> | <b>32.37</b> | <b>10.42</b> |                                     |
| 11B1                                                           |              | 105.43       |              | Not Read                            |
| 11C1                                                           | 40.64        | 98.20        | 57.56        |                                     |
| PFNW                                                           |              | 93.22        |              | Not Read                            |
| 10A1                                                           |              | 78.18        |              | Not Read                            |
| 10G2                                                           |              | 62.95        |              | Not Read                            |
| 10G1                                                           |              | 59.55        |              | Not Read                            |
| 10F2                                                           |              | 66.92        |              | Not Read                            |
| 10M2                                                           | 34.80        | 55.21        | 20.41        |                                     |
| 9J3                                                            |              | 43.45        |              | Not Read                            |
| lagoon                                                         | 20.13        |              |              | mitigation erosion none             |
| <b>AVERAGE LEVEL OF CCSD SAN SIMEON WELLS SS1,SS2 &amp; SS</b> |              |              |              | <b>10.78 FEET</b>                   |

revised 6/6/16

**Red Font are the CCSD's Production Wells, as measured on** 19-Nov-18  
reference point on 16d1,miw1,miw2,miw3,9p7,riw,miw1,ss1,ss2 and ss3 updat:2/17/2015

CAMBRIA COMMUNITY SERVICES DISTRICT  
WELL WATER LEVELS FOR 11/5

| Well Code                                          | Distance Ref. Point to Water Level | Reference Point Distance Above Sea Level | Depth of Water to Sea Level | Remarks           |
|----------------------------------------------------|------------------------------------|------------------------------------------|-----------------------------|-------------------|
| <b>SANTA ROSA CREEK WELLS</b>                      |                                    |                                          |                             |                   |
| 23R                                                | 32.66                              | 83.42                                    | 50.76                       |                   |
| <b>SR4</b>                                         | <b>29.95</b>                       | <b>82.00</b>                             | <b>52.05</b>                |                   |
| SR3                                                | 23.21                              | 54.30                                    | 31.09                       |                   |
| SR1                                                | 19.12                              | 46.40                                    | 27.28                       |                   |
| RP#1                                               |                                    | 46.25                                    |                             |                   |
| RP#2                                               |                                    | 33.11                                    |                             | Not Read          |
| 21R3                                               | 9.79                               | 12.88                                    | 3.09                        | 41695             |
| <b>WBE</b>                                         | <b>13.45</b>                       | <b>16.87</b>                             | <b>3.42</b>                 |                   |
| WBW                                                | 13.86                              | 17.02                                    | 3.16                        |                   |
| AVERAGE LEVEL OF CCSD SANTA ROSA WELLS SR1 & SR3 = |                                    |                                          |                             | 29.19 FEET        |
| <b>CCSD SANTA ROSA WELL SR4 =</b>                  |                                    |                                          |                             | <b>52.05 FEET</b> |

|                                                                |              |              |              |                                     |
|----------------------------------------------------------------|--------------|--------------|--------------|-------------------------------------|
| <b>SAN SIMEON CREEK WELLS</b>                                  |              |              |              |                                     |
| 16D1                                                           | 8.06         | 11.36        | 3.30         |                                     |
| MW4                                                            | 12.48        | 15.95        | 3.47         |                                     |
| MW1                                                            | 19.52        | 42.11        | 22.59        |                                     |
| MW2                                                            | 18.85        | 38.10        | 19.25        |                                     |
| MW3                                                            | 24.89        | 49.56        | 24.67        |                                     |
| 9M1                                                            | 28.75        | 65.63        | 36.88        |                                     |
| 9P2                                                            | 13.02        | 19.11        | 6.09         |                                     |
| 9P7                                                            | 13.49        | 20.69        | 7.20         |                                     |
| 9L1                                                            | 21.14        | 30.50        | 9.36         |                                     |
| RIW                                                            | 17.42        | 25.41        | 7.99         |                                     |
| SS4                                                            | 18.08        | 25.92        | 7.84         | <b>SS4 to 9P2 Gradient = + 1.75</b> |
| MIW                                                            | 18.86        | 29.89        | 11.03        |                                     |
| <b>SS3</b>                                                     | <b>22.05</b> | <b>33.73</b> | <b>11.68</b> |                                     |
| <b>SS2</b>                                                     | <b>21.45</b> | <b>33.16</b> | <b>11.71</b> |                                     |
| <b>SS1</b>                                                     | <b>21.22</b> | <b>32.37</b> | <b>11.15</b> |                                     |
| 11B1                                                           | 45.37        | 105.43       | 60.06        |                                     |
| 11C1                                                           | 38.93        | 98.20        | 59.27        |                                     |
| PFNW                                                           | 34.96        | 93.22        | 58.26        |                                     |
| 10A1                                                           | 40.51        | 78.18        | 37.67        |                                     |
| 10G2                                                           | 30.60        | 62.95        | 32.35        |                                     |
| 10G1                                                           | 28.59        | 59.55        | 30.96        |                                     |
| 10F2                                                           | 36.74        | 66.92        | 30.18        |                                     |
| 10M2                                                           | 34.60        | 55.21        | 20.61        |                                     |
| 9J3                                                            | 25.79        | 43.45        | 17.66        |                                     |
| lagoon                                                         | 20.24        |              |              | mitigation erosion none             |
| <b>AVERAGE LEVEL OF CCSD SAN SIMEON WELLS SS1,SS2 &amp; SS</b> |              |              |              | <b>11.51 FEET</b>                   |

revised 6/6/16

**Red Font are the CCSD's Production Wells, as measured on 05-Nov-18**

reference point on 16d1,miw1,miw2,miw3,9p7,riw,miw1,ss1,ss2 and ss3 updat 2/17/2015

CAMBRIA COMMUNITY SERVICES DISTRICT  
WELL WATER LEVELS FOR 10/15

| Well Code                                          | Distance Ref. Point to Water Level | Reference Point Distance Above Sea Level | Depth of Water to Sea Level | Remarks           |
|----------------------------------------------------|------------------------------------|------------------------------------------|-----------------------------|-------------------|
| <b>SANTA ROSA CREEK WELLS</b>                      |                                    |                                          |                             |                   |
| 23R                                                | 37.35                              | 83.42                                    | 46.07                       |                   |
| <b>SR4</b>                                         | <b>33.11</b>                       | <b>82.00</b>                             | <b>48.89</b>                |                   |
| SR3                                                | 21.90                              | 54.30                                    | 32.40                       |                   |
| SR1                                                | 18.76                              | 46.40                                    | 27.64                       |                   |
| RP#1                                               |                                    | 46.25                                    |                             |                   |
| RP#2                                               |                                    | 33.11                                    |                             | Not Read          |
| 21R3                                               | 9.39                               | 12.88                                    | 3.49                        | 41344             |
| <b>WBE</b>                                         | 13.60                              | 16.87                                    | <b>3.27</b>                 |                   |
| WBW                                                |                                    | 17.02                                    |                             | Not Read          |
| AVERAGE LEVEL OF CCSD SANTA ROSA WELLS SR1 & SR3 = |                                    |                                          |                             | 30.02 FEET        |
| <b>CCSD SANTA ROSA WELL SR4 =</b>                  |                                    |                                          |                             | <b>48.89 FEET</b> |

|                                                                |              |              |              |                                     |
|----------------------------------------------------------------|--------------|--------------|--------------|-------------------------------------|
| <b>SAN SIMEON CREEK WELLS</b>                                  |              |              |              |                                     |
| 16D1                                                           | 7.86         | 11.36        | 3.50         |                                     |
| MW4                                                            | 12.30        | 15.95        | 3.65         |                                     |
| MW1                                                            |              | 42.11        |              | Not Read                            |
| MW2                                                            |              | 38.10        |              | Not Read                            |
| MW3                                                            |              | 49.56        |              | Not Read                            |
| 9M1                                                            |              | 65.63        |              | Not Read                            |
| 9P2                                                            | 12.80        | 19.11        | 6.31         |                                     |
| 9P7                                                            |              | 20.69        |              | Not Read                            |
| 9L1                                                            | 20.72        | 30.50        | 9.78         |                                     |
| RIW                                                            |              | 25.41        |              | Not Read                            |
| SS4                                                            | 17.74        | 25.92        | 8.18         | <b>SS4 to 9P2 Gradient = + 1.87</b> |
| MIW                                                            |              | 29.89        |              | Not Read                            |
| <b>SS3</b>                                                     | <b>21.71</b> | <b>33.73</b> | <b>12.02</b> |                                     |
| <b>SS2</b>                                                     | <b>21.19</b> | <b>33.16</b> | <b>11.97</b> |                                     |
| <b>SS1</b>                                                     | <b>20.82</b> | <b>32.37</b> | <b>11.55</b> |                                     |
| 11B1                                                           |              | 105.43       |              | Not Read                            |
| 11C1                                                           | 35.92        | 98.20        | 62.28        |                                     |
| PFNW                                                           |              | 93.22        |              | Not Read                            |
| 10A1                                                           |              | 78.18        |              | Not Read                            |
| 10G2                                                           |              | 62.95        |              | Not Read                            |
| 10G1                                                           |              | 59.55        |              | Not Read                            |
| 10F2                                                           |              | 66.92        |              | Not Read                            |
| 10M2                                                           | 33.80        | 55.21        | 21.41        |                                     |
| 9J3                                                            |              | 43.45        |              | Not Read                            |
| lagoon                                                         | 20.03        |              |              | mitigation erosion none             |
| <b>AVERAGE LEVEL OF CCSD SAN SIMEON WELLS SS1,SS2 &amp; SS</b> |              |              |              | <b>11.85 FEET</b>                   |

revised 6/6/16

**Red Font are the CCSD's Production Wells, as measured on 10/15**

reference point on 16d1,miw1,miw2,miw3,9p7,riw,miw1,ss1,ss2 and ss3 updated 2/17/2015

10/1/18

CAMBRIA COMMUNITY SERVICES DISTRICT  
WELL WATER LEVELS FOR 10/1/18

| Well Code                                          | Distance Ref. Point to Water Level | Reference Point Distance Above Sea Level | Depth of Water to Sea Level | Remarks           |
|----------------------------------------------------|------------------------------------|------------------------------------------|-----------------------------|-------------------|
| <b>SANTA ROSA CREEK WELLS</b>                      |                                    |                                          |                             |                   |
| 23R                                                | 32.32                              | 83.42                                    | 51.10                       |                   |
| <b>SR4</b>                                         | <b>29.70</b>                       | <b>82.00</b>                             | <b>52.30</b>                |                   |
| SR3                                                | 20.70                              | 54.30                                    | 33.60                       |                   |
| SR1                                                | 18.25                              | 46.40                                    | 28.15                       |                   |
| RP#1                                               |                                    | 46.25                                    |                             |                   |
| RP#2                                               |                                    | 33.11                                    |                             | Not Read          |
| 21R3                                               | 9.80                               | 12.88                                    | 3.08                        | 41268             |
| <b>WBE</b>                                         | 13.40                              | 16.87                                    | <b>3.47</b>                 |                   |
| WBW                                                | 13.82                              | 17.02                                    | 3.20                        |                   |
| AVERAGE LEVEL OF CCSD SANTA ROSA WELLS SR1 & SR3 = |                                    |                                          |                             | 30.88 FEET        |
| <b>CCSD SANTA ROSA WELL SR4 =</b>                  |                                    |                                          |                             | <b>52.30 FEET</b> |

|                                                                |              |              |              |                                     |
|----------------------------------------------------------------|--------------|--------------|--------------|-------------------------------------|
| <b>SAN SIMEON CREEK WELLS</b>                                  |              |              |              |                                     |
| 16D1                                                           | 8.02         | 11.36        | 3.34         |                                     |
| MW4                                                            | 12.44        | 15.95        | 3.51         |                                     |
| MW1                                                            | 18.90        | 42.11        | 23.21        |                                     |
| MW2                                                            | 18.25        | 38.10        | 19.85        |                                     |
| MW3                                                            | 24.15        | 49.56        | 25.41        |                                     |
| 9M1                                                            | 30.25        | 65.63        | 35.38        |                                     |
| 9P2                                                            | 12.86        | 19.11        | 6.25         |                                     |
| 9P7                                                            | 13.20        | 20.69        | 7.49         |                                     |
| 9L1                                                            | 20.84        | 27.33        | 6.49         |                                     |
| RIW                                                            | 17.11        | 25.41        | 8.30         |                                     |
| SS4                                                            | 17.82        | 25.92        | 8.10         | <b>SS4 to 9P2 Gradient = + 1.85</b> |
| MIW                                                            | 18.55        | 29.89        | 11.34        |                                     |
| <b>SS3</b>                                                     | <b>21.70</b> | <b>33.73</b> | <b>12.03</b> |                                     |
| <b>SS2</b>                                                     | <b>20.64</b> | <b>33.16</b> | <b>12.52</b> |                                     |
| <b>SS1</b>                                                     | <b>20.75</b> | <b>32.37</b> | <b>11.62</b> |                                     |
| 11B1                                                           | 40.15        | 105.43       | 65.28        |                                     |
| 11C1                                                           | 33.75        | 98.20        | 64.45        |                                     |
| PFNW                                                           | 29.95        | 93.22        | 63.27        |                                     |
| 10A1                                                           | 36.50        | 78.18        | 41.68        |                                     |
| 10G2                                                           | 28.00        | 62.95        | 34.95        |                                     |
| 10G1                                                           | 26.10        | 59.55        | 33.45        |                                     |
| 10F2                                                           | 34.35        | 66.92        | 32.57        |                                     |
| 10M2                                                           | 32.20        | 55.21        | 23.01        |                                     |
| 9J3                                                            | 24.22        | 43.45        | 19.23        |                                     |
| lagoon                                                         | 20.20        |              |              | mitigation erosion none             |
| <b>AVERAGE LEVEL OF CCSD SAN SIMEON WELLS SS1,SS2 &amp; SS</b> |              |              |              | <b>12.06 FEET</b>                   |

revised 6/6/16

**Red Font are the CCSD's Production Wells, as measured on 10/1/18**

reference point on 16d1,miw1,miw2,miw3,9p7,riw,miw1,ss1,ss2 and ss3 updated 2/17/2015

9/17/18

CAMBRIA COMMUNITY SERVICES DISTRICT  
WELL WATER LEVELS FOR 9/17/18

| Well Code                                          | Distance Ref. Point to Water Level | Reference Point Distance Above Sea Level | Depth of Water to Sea Level | Remarks           |
|----------------------------------------------------|------------------------------------|------------------------------------------|-----------------------------|-------------------|
| <b>SANTA ROSA CREEK WELLS</b>                      |                                    |                                          |                             |                   |
| 23R                                                | 32.06                              | 83.42                                    | 51.36                       |                   |
| <b>SR4</b>                                         | <b>29.31</b>                       | <b>82.00</b>                             | <b>52.69</b>                |                   |
| SR3                                                | 20.45                              | 54.30                                    | 33.85                       |                   |
| SR1                                                | 18.33                              | 46.40                                    | 28.07                       |                   |
| RP#1                                               |                                    | 46.25                                    |                             |                   |
| RP#2                                               |                                    | 33.11                                    |                             | Not Read          |
| 21R3                                               | 9.78                               | 12.88                                    | 3.10                        | 41344             |
| <b>WBE</b>                                         | 13.40                              | 16.87                                    | <b>3.47</b>                 |                   |
| WBW                                                |                                    | 17.02                                    |                             | Not Read          |
| AVERAGE LEVEL OF CCSD SANTA ROSA WELLS SR1 & SR3 = |                                    |                                          |                             | 30.96 FEET        |
| <b>CCSD SANTA ROSA WELL SR4 =</b>                  |                                    |                                          |                             | <b>52.69 FEET</b> |

|                                                                |              |              |              |                                     |
|----------------------------------------------------------------|--------------|--------------|--------------|-------------------------------------|
| <b>SAN SIMEON CREEK WELLS</b>                                  |              |              |              |                                     |
| 16D1                                                           | 8.09         | 11.36        | 3.27         |                                     |
| MW4                                                            | 12.54        | 15.95        | 3.41         |                                     |
| MW1                                                            |              | 42.11        |              | Not Read                            |
| MW2                                                            |              | 38.10        |              | Not Read                            |
| MW3                                                            |              | 49.56        |              | Not Read                            |
| 9M1                                                            |              | 65.63        |              | Not Read                            |
| 9P2                                                            | 12.75        | 19.11        | 6.36         |                                     |
| 9P7                                                            |              | 20.69        |              | Not Read                            |
| 9L1                                                            | 20.55        | 30.50        | 9.95         |                                     |
| RIW                                                            |              | 25.41        |              | Not Read                            |
| SS4                                                            | 17.60        | 25.92        | 8.32         | <b>SS4 to 9P2 Gradient = + 1.96</b> |
| MIW                                                            |              | 29.89        |              | Not Read                            |
| <b>SS3</b>                                                     | <b>21.42</b> | <b>33.73</b> | <b>12.31</b> |                                     |
| <b>SS2</b>                                                     | <b>20.39</b> | <b>33.16</b> | <b>12.77</b> |                                     |
| <b>SS1</b>                                                     | <b>19.92</b> | <b>32.37</b> | <b>12.45</b> |                                     |
| 11B1                                                           |              | 105.43       |              | Not Read                            |
| 11C1                                                           | 31.31        | 98.20        | 66.89        |                                     |
| PFNW                                                           |              | 93.22        |              | Not Read                            |
| 10A1                                                           |              | 78.18        |              | Not Read                            |
| 10G2                                                           |              | 62.95        |              | Not Read                            |
| 10G1                                                           |              | 59.55        |              | Not Read                            |
| 10F2                                                           |              | 66.92        |              | Not Read                            |
| 10M2                                                           | 30.82        | 55.21        | 24.39        |                                     |
| 9J3                                                            |              | 43.45        |              | Not Read                            |
| lagoon                                                         | 20.29        |              |              | mitigation erosion none             |
| <b>AVERAGE LEVEL OF CCSD SAN SIMEON WELLS SS1,SS2 &amp; SS</b> |              |              |              | <b>12.51 FEET</b>                   |

revised 6/6/16

**Red Font are the CCSD's Production Wells, as measured on 9/17/18**

reference point on 16d1,miw1,miw2,miw3,9p7,riw,miw1,ss1,ss2 and ss3 updated 2/17/2015

9/5/18

CAMBRIA COMMUNITY SERVICES DISTRICT  
WELL WATER LEVELS FOR 9/5/18

| Well Code                                          | Distance Ref. Point to Water Level | Reference Point Distance Above Sea Level | Depth of Water to Sea Level | Remarks           |
|----------------------------------------------------|------------------------------------|------------------------------------------|-----------------------------|-------------------|
| <b>SANTA ROSA CREEK WELLS</b>                      |                                    |                                          |                             |                   |
| 23R                                                | 34.10                              | 83.42                                    | 49.32                       |                   |
| <b>SR4</b>                                         | <b>31.11</b>                       | <b>82.00</b>                             | <b>50.89</b>                |                   |
| SR3                                                | 20.15                              | 54.30                                    | 34.15                       |                   |
| SR1                                                | 18.22                              | 46.40                                    | 28.18                       |                   |
| RP#1                                               |                                    | 46.25                                    |                             |                   |
| RP#2                                               |                                    | 33.11                                    |                             | Not Read          |
| 21R3                                               | 9.73                               | 12.88                                    | 3.15                        | 41268             |
| <b>WBE</b>                                         | <b>13.32</b>                       | <b>16.87</b>                             | <b>3.55</b>                 |                   |
| WBW                                                | 13.71                              | 17.02                                    | 3.31                        |                   |
| AVERAGE LEVEL OF CCSD SANTA ROSA WELLS SR1 & SR3 = |                                    |                                          |                             | 31.17 FEET        |
| <b>CCSD SANTA ROSA WELL SR4 =</b>                  |                                    |                                          |                             | <b>50.89 FEET</b> |

|                                                                |              |              |              |                                     |
|----------------------------------------------------------------|--------------|--------------|--------------|-------------------------------------|
| <b>SAN SIMEON CREEK WELLS</b>                                  |              |              |              |                                     |
| 16D1                                                           | 8.11         | 11.36        | 3.25         |                                     |
| MW4                                                            | 12.52        | 15.95        | 3.43         |                                     |
| MW1                                                            | 18.40        | 42.11        | 23.71        |                                     |
| MW2                                                            | 17.77        | 38.10        | 20.33        |                                     |
| MW3                                                            | 23.56        | 49.56        | 26.00        |                                     |
| 9M1                                                            | 27.19        | 65.63        | 38.44        |                                     |
| 9P2                                                            | 12.48        | 19.11        | 6.63         |                                     |
| 9P7                                                            | 12.79        | 20.69        | 7.90         |                                     |
| 9L1                                                            | 20.39        | 27.33        | 6.94         |                                     |
| RIW                                                            | 16.67        | 25.41        | 8.74         |                                     |
| SS4                                                            | 17.40        | 25.92        | 8.52         | <b>SS4 to 9P2 Gradient = + 1.89</b> |
| MIW                                                            | 18.07        | 29.89        | 11.82        |                                     |
| <b>SS3</b>                                                     | <b>21.20</b> | <b>33.73</b> | <b>12.53</b> |                                     |
| <b>SS2</b>                                                     | <b>20.21</b> | <b>33.16</b> | <b>12.95</b> |                                     |
| <b>SS1</b>                                                     | <b>20.09</b> | <b>32.37</b> | <b>12.28</b> |                                     |
| 11B1                                                           | 35.47        | 105.43       | 69.96        |                                     |
| 11C1                                                           | 29.13        | 98.20        | 69.07        |                                     |
| PFNW                                                           | 25.52        | 93.22        | 67.70        |                                     |
| 10A1                                                           | 33.26        | 78.18        | 44.92        |                                     |
| 10G2                                                           | 25.21        | 62.95        | 37.74        |                                     |
| 10G1                                                           | 23.51        | 59.55        | 36.04        |                                     |
| 10F2                                                           | 31.80        | 66.92        | 35.12        |                                     |
| 10M2                                                           | 30.12        | 55.21        | 25.09        |                                     |
| 9J3                                                            | 23.05        | 43.45        | 20.40        |                                     |
| lagoon                                                         | 20.35        |              |              | mitigation erosion none             |
| <b>AVERAGE LEVEL OF CCSD SAN SIMEON WELLS SS1,SS2 &amp; SS</b> |              |              |              | <b>12.59 FEET</b>                   |

revised 6/6/16

**Red Font are the CCSD's Production Wells, as measured on 9/5/18**

reference point on 16d1,miw1,miw2,miw3,9p7,riw,miw1,ss1,ss2 and ss3 updat 2/17/2015

8/13/18

CAMBRIA COMMUNITY SERVICES DISTRICT  
WELL WATER LEVELS FOR 8/13/18

| Well Code                                          | Distance Ref. Point to Water Level | Reference Point Distance Above Sea Level | Depth of Water to Sea Level | Remarks           |
|----------------------------------------------------|------------------------------------|------------------------------------------|-----------------------------|-------------------|
| <b>SANTA ROSA CREEK WELLS</b>                      |                                    |                                          |                             |                   |
| 23R                                                | 34.79                              | 83.42                                    | 48.63                       |                   |
| <b>SR4</b>                                         | <b>31.07</b>                       | <b>82.00</b>                             | <b>50.93</b>                |                   |
| SR3                                                | 20.21                              | 54.30                                    | 34.09                       |                   |
| SR1                                                | 18.18                              | 46.40                                    | 28.22                       |                   |
| RP#1                                               |                                    | 46.25                                    |                             |                   |
| RP#2                                               |                                    | 33.11                                    |                             | Not Read          |
| 21R3                                               | 9.24                               | 12.88                                    | 3.64                        | 41344             |
| <b>WBE</b>                                         | 12.87                              | 16.87                                    | <b>4.00</b>                 |                   |
| WBW                                                |                                    | 17.02                                    |                             | Not Read          |
| AVERAGE LEVEL OF CCSD SANTA ROSA WELLS SR1 & SR3 = |                                    |                                          |                             | 31.16 FEET        |
| <b>CCSD SANTA ROSA WELL SR4 =</b>                  |                                    |                                          |                             | <b>50.93 FEET</b> |

|                                                                |              |              |              |                                     |
|----------------------------------------------------------------|--------------|--------------|--------------|-------------------------------------|
| <b>SAN SIMEON CREEK WELLS</b>                                  |              |              |              |                                     |
| 16D1                                                           | 7.80         | 11.36        | 3.56         |                                     |
| MW4                                                            | 12.19        | 15.95        | 3.76         |                                     |
| MW1                                                            |              | 42.11        |              | Not Read                            |
| MW2                                                            |              | 38.10        |              | Not Read                            |
| MW3                                                            |              | 49.56        |              | Not Read                            |
| 9M1                                                            |              | 65.63        |              | Not Read                            |
| 9P2                                                            | 12.10        | 19.11        | 7.01         |                                     |
| 9P7                                                            |              | 20.69        |              | Not Read                            |
| 9L1                                                            | 16.19        | 27.33        | 11.14        |                                     |
| RIW                                                            |              | 25.41        |              | Not Read                            |
| SS4                                                            | 16.64        | 25.92        | 9.28         | <b>SS4 to 9P2 Gradient = + 2.27</b> |
| MIW                                                            |              | 29.89        |              | Not Read                            |
| <b>SS3</b>                                                     | <b>19.90</b> | <b>33.73</b> | <b>13.83</b> |                                     |
| <b>SS2</b>                                                     | <b>18.98</b> | <b>33.16</b> | <b>14.18</b> |                                     |
| <b>SS1</b>                                                     | <b>18.76</b> | <b>32.37</b> | <b>13.61</b> |                                     |
| 11B1                                                           |              | 105.43       |              | Not Read                            |
| 11C1                                                           | 24.90        | 98.20        | 73.30        |                                     |
| PFNW                                                           |              | 93.22        |              | Not Read                            |
| 10A1                                                           |              | 78.18        |              | Not Read                            |
| 10G2                                                           |              | 62.95        |              | Not Read                            |
| 10G1                                                           |              | 59.55        |              | Not Read                            |
| 10F2                                                           |              | 66.92        |              | Not Read                            |
| 10M2                                                           | 27.98        | 55.21        | 27.23        |                                     |
| 9J3                                                            |              | 43.45        |              | Not Read                            |
| lagoon                                                         | 20.01        |              |              | mitigation erosion none             |
| <b>AVERAGE LEVEL OF CCSD SAN SIMEON WELLS SS1,SS2 &amp; SS</b> |              |              |              | <b>13.87 FEET</b>                   |

revised 6/6/16

**Red Font are the CCSD's Production Wells, as measured on 8/13/18**

reference point on 16d1,miw1,miw2,miw3,9p7,riw,miw1,ss1,ss2 and ss3 updated 2/17/2015

8/1/18

CAMBRIA COMMUNITY SERVICES DISTRICT  
WELL WATER LEVELS FOR 8/1/18

| Well Code                                          | Distance Ref. Point to Water Level | Reference Point Distance Above Sea Level | Depth of Water to Sea Level | Remarks           |
|----------------------------------------------------|------------------------------------|------------------------------------------|-----------------------------|-------------------|
| <b>SANTA ROSA CREEK WELLS</b>                      |                                    |                                          |                             |                   |
| 23R                                                | 32.52                              | 83.42                                    | 50.90                       |                   |
| <b>SR4</b>                                         | <b>29.83</b>                       | <b>82.00</b>                             | <b>52.17</b>                |                   |
| SR3                                                | 20.40                              | 54.30                                    | 33.90                       |                   |
| SR1                                                | 18.20                              | 46.40                                    | 28.20                       |                   |
| RP#1                                               |                                    | 46.25                                    |                             |                   |
| RP#2                                               |                                    | 33.11                                    |                             | Not Read          |
| 21R3                                               | 9.65                               | 12.88                                    | 3.23                        | 41268             |
| <b>WBE</b>                                         | <b>13.21</b>                       | <b>16.87</b>                             | <b>3.66</b>                 |                   |
| WBW                                                | 13.65                              | 17.02                                    | 3.37                        |                   |
| AVERAGE LEVEL OF CCSD SANTA ROSA WELLS SR1 & SR3 = |                                    |                                          |                             | 31.05 FEET        |
| <b>CCSD SANTA ROSA WELL SR4 =</b>                  |                                    |                                          |                             | <b>52.17 FEET</b> |

|                                                                |              |              |              |                                     |
|----------------------------------------------------------------|--------------|--------------|--------------|-------------------------------------|
| <b>SAN SIMEON CREEK WELLS</b>                                  |              |              |              |                                     |
| 16D1                                                           | 7.88         | 11.36        | 3.48         |                                     |
| MW4                                                            | 12.21        | 15.95        | 3.74         |                                     |
| MW1                                                            | 17.44        | 42.11        | 24.67        |                                     |
| MW2                                                            | 16.92        | 38.10        | 21.18        |                                     |
| MW3                                                            | 22.47        | 49.56        | 27.09        |                                     |
| 9M1                                                            | 31.41        | 65.63        | 34.22        |                                     |
| 9P2                                                            | 11.77        | 19.11        | 7.34         |                                     |
| 9P7                                                            | 12.21        | 20.69        | 8.48         |                                     |
| 9L1                                                            | 15.55        | 27.33        | 11.78        |                                     |
| RIW                                                            | 14.95        | 25.41        | 10.46        |                                     |
| SS4                                                            | 16.35        | 25.92        | 9.57         | <b>SS4 to 9P2 Gradient = + 2.23</b> |
| MIW                                                            | 16.05        | 29.89        | 13.84        |                                     |
| <b>SS3</b>                                                     | <b>18.97</b> | <b>33.73</b> | <b>14.76</b> |                                     |
| <b>SS2</b>                                                     | <b>18.00</b> | <b>33.16</b> | <b>15.16</b> |                                     |
| <b>SS1</b>                                                     | <b>17.54</b> | <b>32.37</b> | <b>14.83</b> |                                     |
| 11B1                                                           | 29.15        | 105.43       | 76.28        |                                     |
| 11C1                                                           | 23.05        | 98.20        | 75.15        |                                     |
| PFNW                                                           | 19.75        | 93.22        | 73.47        |                                     |
| 10A1                                                           | 28.80        | 78.18        | 49.38        |                                     |
| 10G2                                                           | 21.27        | 62.95        | 41.68        |                                     |
| 10G1                                                           | 19.57        | 59.55        | 39.98        |                                     |
| 10F2                                                           | 27.95        | 66.92        | 38.97        |                                     |
| 10M2                                                           | 26.15        | 55.21        | 29.06        |                                     |
| 9J3                                                            | 19.45        | 43.45        | 24.00        |                                     |
| lagoon                                                         | 20.30        |              |              | mitigation erosion none             |
| <b>AVERAGE LEVEL OF CCSD SAN SIMEON WELLS SS1,SS2 &amp; SS</b> |              |              |              | <b>14.92 FEET</b>                   |

revised 6/6/16

**Red Font are the CCSD's Production Wells, as measured on 8/1/18**

reference point on 16d1,miw1,miw2,miw3,9p7,riw,miw1,ss1,ss2 and ss3 updated 2/17/2015



7/16/18

CAMBRIA COMMUNITY SERVICES DISTRICT  
WELL WATER LEVELS FOR 7/16/18

| Well Code                                          | Distance Ref. Point to Water Level | Reference Point Distance Above Sea Level | Depth of Water to Sea Level | Remarks           |
|----------------------------------------------------|------------------------------------|------------------------------------------|-----------------------------|-------------------|
| <b>SANTA ROSA CREEK WELLS</b>                      |                                    |                                          |                             |                   |
| 23R                                                | 32.90                              | 83.42                                    | 50.52                       |                   |
| <b>SR4</b>                                         | <b>30.10</b>                       | <b>82.00</b>                             | <b>51.90</b>                |                   |
| SR3                                                | 20.02                              | 54.30                                    | 34.28                       |                   |
| SR1                                                | 18.04                              | 46.40                                    | 28.36                       |                   |
| RP#1                                               |                                    | 46.25                                    |                             |                   |
| RP#2                                               |                                    | 33.11                                    |                             | Not Read          |
| 21R3                                               | 9.12                               | 12.88                                    | 3.76                        | 41002             |
| <b>WBE</b>                                         | 12.81                              | 16.87                                    | <b>4.06</b>                 |                   |
| WBW                                                |                                    | 17.02                                    |                             | Not Read          |
| AVERAGE LEVEL OF CCSD SANTA ROSA WELLS SR1 & SR3 = |                                    |                                          |                             | 31.32 FEET        |
| <b>CCSD SANTA ROSA WELL SR4 =</b>                  |                                    |                                          |                             | <b>51.90 FEET</b> |

|                                                     |              |              |              |                                     |
|-----------------------------------------------------|--------------|--------------|--------------|-------------------------------------|
| <b>SAN SIMEON CREEK WELLS</b>                       |              |              |              |                                     |
| 16D1                                                | 7.81         | 11.36        | 3.55         |                                     |
| MW4                                                 | 12.18        | 15.95        | 3.77         |                                     |
| MW1                                                 |              | 42.11        |              | Not Read                            |
| MW2                                                 |              | 38.10        |              | Not Read                            |
| MW3                                                 |              | 49.56        |              | Not Read                            |
| 9M1                                                 |              | 65.63        |              | Not Read                            |
| 9P2                                                 | 11.69        | 19.11        | 7.42         |                                     |
| 9P7                                                 |              | 20.69        |              | Not Read                            |
| 9L1                                                 | 15.35        | 27.33        | 11.98        |                                     |
| RIW                                                 |              | 25.41        |              | Not Read                            |
| SS4                                                 | 16.12        | 25.92        | 9.80         | <b>SS4 to 9P2 Gradient = + 2.38</b> |
| MIW                                                 |              | 29.89        |              | Not Read                            |
| <b>SS3</b>                                          | <b>18.92</b> | <b>33.73</b> | <b>14.81</b> |                                     |
| <b>SS2</b>                                          | <b>18.00</b> | <b>33.16</b> | <b>15.16</b> |                                     |
| <b>SS1</b>                                          | <b>17.36</b> | <b>32.37</b> | <b>15.01</b> |                                     |
| 11B1                                                |              | 105.43       |              | Not Read                            |
| 11C1                                                | 20.52        | 98.20        | 77.68        |                                     |
| PFNW                                                |              | 93.22        |              | Not Read                            |
| 10A1                                                |              | 78.18        |              | Not Read                            |
| 10G2                                                |              | 62.95        |              | Not Read                            |
| 10G1                                                |              | 59.55        |              | Not Read                            |
| 10F2                                                |              | 66.92        |              | Not Read                            |
| 10M2                                                | 24.25        | 55.21        | 30.96        |                                     |
| 9J3                                                 |              | 43.45        |              | Not Read                            |
| lagoon                                              | 20.10        |              |              | mitigation erosion none             |
| AVERAGE LEVEL OF CCSD SAN SIMEON WELLS SS1,SS2 & SS |              |              |              | <b>14.99 FEET</b>                   |

revised 6/6/16

**Red Font are the CCSD's Production Wells, as measured on 7/16/18**

reference point on 16d1,miw1,miw2,miw3,9p7,riw,miw1,ss1,ss2 and ss3 updated 2/17/2015

7/2/18

CAMBRIA COMMUNITY SERVICES DISTRICT  
WELL WATER LEVELS FOR 7/2/18

| Well Code                     | Distance Ref. Point to Water Level | Reference Point Distance Above Sea Level | Depth of Water to Sea Level | Remarks  |
|-------------------------------|------------------------------------|------------------------------------------|-----------------------------|----------|
| <b>SANTA ROSA CREEK WELLS</b> |                                    |                                          |                             |          |
| 23R                           | 35.59                              | 83.42                                    | 47.83                       |          |
| <b>SR4</b>                    | <b>31.85</b>                       | <b>82.00</b>                             | <b>50.15</b>                |          |
| SR3                           | 20.00                              | 54.30                                    | 34.30                       |          |
| SR1                           | 17.95                              | 46.40                                    | 28.45                       |          |
| RP#1                          |                                    | 46.25                                    |                             |          |
| RP#2                          |                                    | 33.11                                    |                             | Not Read |
| 21R3                          | 9.25                               | 12.88                                    | 3.63                        | 40682    |
| <b>WBE</b>                    | <b>12.86</b>                       | <b>16.87</b>                             | <b>4.01</b>                 |          |
| WBW                           | 13.25                              | 17.02                                    | 3.77                        |          |

AVERAGE LEVEL OF CCSD SANTA ROSA WELLS SR1 & SR3 = 31.38 FEET  
**CCSD SANTA ROSA WELL SR4 = 50.15 FEET**

**SAN SIMEON CREEK WELLS**

|            |              |              |              |                                     |
|------------|--------------|--------------|--------------|-------------------------------------|
| 16D1       | 8.16         | 11.36        | 3.20         |                                     |
| MW4        | 12.53        | 15.95        | 3.42         |                                     |
| MW1        | 16.38        | 42.11        | 25.73        |                                     |
| MW2        | 15.65        | 38.10        | 22.45        |                                     |
| MW3        | 21.27        | 49.56        | 28.29        |                                     |
| 9M1        | 40.00        | 65.63        | 25.63        |                                     |
| 9P2        | 11.50        | 19.11        | 7.61         |                                     |
| 9P7        | 11.72        | 20.69        | 8.97         |                                     |
| 9L1        | 14.43        | 27.33        | 12.90        |                                     |
| RIW        | 13.85        | 25.41        | 11.56        |                                     |
| SS4        | 15.62        | 25.92        | 10.30        | <b>SS4 to 9P2 Gradient = + 2.69</b> |
| MIW        | 14.73        | 29.89        | 15.16        |                                     |
| <b>SS3</b> | <b>17.63</b> | <b>33.73</b> | <b>16.10</b> |                                     |
| <b>SS2</b> | <b>16.75</b> | <b>33.16</b> | <b>16.41</b> |                                     |
| <b>SS1</b> | <b>16.03</b> | <b>32.37</b> | <b>16.34</b> |                                     |
| 11B1       | 23.25        | 105.43       | 82.18        |                                     |
| 11C1       | 17.80        | 98.20        | 80.40        |                                     |
| PFNW       | 15.72        | 93.22        | 77.50        |                                     |
| 10A1       | 26.24        | 78.18        | 51.94        |                                     |
| 10G2       | 19.75        | 62.95        | 43.20        |                                     |
| 10G1       | 18.10        | 59.55        | 41.45        |                                     |
| 10F2       | 26.24        | 66.92        | 40.68        |                                     |
| 10M2       | 23.59        | 55.21        | 31.62        |                                     |
| 9J3        | 17.51        | 43.45        | 25.94        |                                     |
| lagoon     | 20.45        |              |              | mitigation erosion none             |

AVERAGE LEVEL OF CCSD SAN SIMEON WELLS SS1,SS2 & SS 16.28 FEET

revised 6/6/16

**Red Font are the CCSD's Production Wells, as measured on 7/2/18**

reference point on 16d1,miw1,miw2,miw3,9p7,riw,miw1,ss1,ss2 and ss3 updated 2/17/2015

6/18/18

CAMBRIA COMMUNITY SERVICES DISTRICT  
WELL WATER LEVELS FOR 6/18/18

| Well Code                     | Distance Ref. Point to Water Level | Reference Point Distance Above Sea Level | Depth of Water to Sea Level | Remarks  |
|-------------------------------|------------------------------------|------------------------------------------|-----------------------------|----------|
| <b>SANTA ROSA CREEK WELLS</b> |                                    |                                          |                             |          |
| 23R                           | 36.51                              | 83.42                                    | 46.91                       |          |
| <b>SR4</b>                    | <b>32.57</b>                       | <b>82.00</b>                             | <b>49.43</b>                |          |
| SR3                           | 19.89                              | 54.30                                    | 34.41                       |          |
| SR1                           | 18.01                              | 46.40                                    | 28.39                       |          |
| RP#1                          |                                    | 46.25                                    |                             |          |
| RP#2                          |                                    | 33.11                                    |                             | Not Read |
| 21R3                          | 8.20                               | 12.88                                    | 4.68                        | 41002    |
| <b>WBE</b>                    | 12.03                              | 16.87                                    | <b>4.84</b>                 |          |
| WBW                           |                                    | 17.02                                    |                             | Not Read |

AVERAGE LEVEL OF CCSD SANTA ROSA WELLS SR1 & SR3 = 31.40 FEET  
**CCSD SANTA ROSA WELL SR4 = 49.43 FEET**

|                               |              |              |              |                                     |
|-------------------------------|--------------|--------------|--------------|-------------------------------------|
| <b>SAN SIMEON CREEK WELLS</b> |              |              |              |                                     |
| 16D1                          | 7.22         | 11.36        | 4.14         |                                     |
| MW4                           | 11.60        | 15.95        | 4.35         |                                     |
| MW1                           |              | 42.11        |              | Not Read                            |
| MW2                           |              | 38.10        |              | Not Read                            |
| MW3                           |              | 49.56        |              | Not Read                            |
| 9M1                           |              | 65.63        |              | Not Read                            |
| 9P2                           | 11.10        | 19.11        | 8.01         |                                     |
| 9P7                           |              | 20.69        |              | Not Read                            |
| 9L1                           | 13.40        | 27.33        | 13.93        |                                     |
| RIW                           |              | 25.41        |              | Not Read                            |
| SS4                           | 14.95        | 25.92        | 10.97        | <b>SS4 to 9P2 Gradient = + 2.96</b> |
| MIW                           |              | 29.89        |              | Not Read                            |
| <b>SS3</b>                    | <b>16.06</b> | <b>33.73</b> | <b>17.67</b> |                                     |
| <b>SS2</b>                    | <b>15.01</b> | <b>33.16</b> | <b>18.15</b> |                                     |
| <b>SS1</b>                    | <b>14.22</b> | <b>32.37</b> | <b>18.15</b> |                                     |
| 11B1                          |              | 105.43       |              | Not Read                            |
| 11C1                          | 16.13        | 98.20        | 82.07        |                                     |
| PFNW                          |              | 93.22        |              | Not Read                            |
| 10A1                          |              | 78.18        |              | Not Read                            |
| 10G2                          |              | 62.95        |              | Not Read                            |
| 10G1                          |              | 59.55        |              | Not Read                            |
| 10F2                          |              | 66.92        |              | Not Read                            |
| 10M2                          | 22.89        | 55.21        | 32.32        |                                     |
| 9J3                           |              | 43.45        |              | Not Read                            |
| lagoon                        | 19.64        |              |              | mitigation erosion none             |

**AVERAGE LEVEL OF CCSD SAN SIMEON WELLS SS1,SS2 & SS 17.99 FEET**

revised 6/6/16

**Red Font are the CCSD's Production Wells, as measured on 6/18/18**

reference point on 16d1,miw1,miw2,miw3,9p7,riw,miw1,ss1,ss2 and ss3 updated 2/17/2015

6/4/18

CAMBRIA COMMUNITY SERVICES DISTRICT  
WELL WATER LEVELS FOR 6/4/18

| Well Code                                          | Distance Ref. Point to Water Level | Reference Point Distance Above Sea Level | Depth of Water to Sea Level | Remarks           |
|----------------------------------------------------|------------------------------------|------------------------------------------|-----------------------------|-------------------|
| <b>SANTA ROSA CREEK WELLS</b>                      |                                    |                                          |                             |                   |
| 23R                                                | 35.76                              | 83.42                                    | 47.66                       |                   |
| <b>SR4</b>                                         | <b>31.62</b>                       | <b>82.00</b>                             | <b>50.38</b>                |                   |
| SR3                                                | 19.87                              | 54.30                                    | 34.43                       |                   |
| SR1                                                | 17.99                              | 46.40                                    | 28.41                       |                   |
| RP#1                                               |                                    | 46.25                                    |                             |                   |
| RP#2                                               |                                    | 33.11                                    |                             | Not Read          |
| 21R3                                               | 9.93                               | 12.88                                    | 2.95                        | 40682             |
| <b>WBE</b>                                         | 12.62                              | 16.87                                    | <b>4.25</b>                 |                   |
| WBW                                                | 13.00                              | 17.02                                    | 4.02                        |                   |
| AVERAGE LEVEL OF CCSD SANTA ROSA WELLS SR1 & SR3 = |                                    |                                          |                             | 31.42 FEET        |
| <b>CCSD SANTA ROSA WELL SR4 =</b>                  |                                    |                                          |                             | <b>50.38 FEET</b> |

|                                                                |              |              |              |                                     |
|----------------------------------------------------------------|--------------|--------------|--------------|-------------------------------------|
| <b>SAN SIMEON CREEK WELLS</b>                                  |              |              |              |                                     |
| 16D1                                                           | 8.00         | 11.36        | 3.36         |                                     |
| MW4                                                            | 12.34        | 15.95        | 3.61         |                                     |
| MW1                                                            | 15.26        | 42.11        | 26.85        |                                     |
| MW2                                                            | 15.03        | 38.10        | 23.07        |                                     |
| MW3                                                            | 20.03        | 49.56        | 29.53        |                                     |
| 9M1                                                            | 27.84        | 65.63        | 37.79        |                                     |
| 9P2                                                            | 10.98        | 19.11        | 8.13         |                                     |
| 9P7                                                            | 11.25        | 20.69        | 9.44         |                                     |
| 9L1                                                            | 12.47        | 27.33        | 14.86        |                                     |
| RIW                                                            | 11.77        | 25.41        | 13.64        |                                     |
| SS4                                                            | 14.50        | 25.92        | 11.42        | <b>SS4 to 9P2 Gradient = + 3.29</b> |
| MIW                                                            | 12.29        | 29.89        | 17.60        |                                     |
| <b>SS3</b>                                                     | <b>15.00</b> | <b>33.73</b> | <b>18.73</b> |                                     |
| <b>SS2</b>                                                     | <b>13.99</b> | <b>33.16</b> | <b>19.17</b> |                                     |
| <b>SS1</b>                                                     | <b>12.99</b> | <b>32.37</b> | <b>19.38</b> |                                     |
| 11B1                                                           | 19.82        | 105.43       | 85.61        |                                     |
| 11C1                                                           | 14.81        | 98.20        | 83.39        |                                     |
| PFNW                                                           | 13.55        | 93.22        | 79.67        |                                     |
| 10A1                                                           | 26.61        | 78.18        | 51.57        |                                     |
| 10G2                                                           | 19.64        | 62.95        | 43.31        |                                     |
| 10G1                                                           | 17.95        | 59.55        | 41.60        |                                     |
| 10F2                                                           | 26.04        | 66.92        | 40.88        |                                     |
| 10M2                                                           | 22.52        | 55.21        | 32.69        |                                     |
| 9J3                                                            | 16.22        | 43.45        | 27.23        |                                     |
| lagoon                                                         | 20.32        |              |              | mitigation erosion none             |
| <b>AVERAGE LEVEL OF CCSD SAN SIMEON WELLS SS1,SS2 &amp; SS</b> |              |              |              | <b>19.09 FEET</b>                   |

revised 6/6/16

**Red Font are the CCSD's Production Wells, as measured on 6/4/18**

reference point on 16d1,miw1,miw2,miw3,9p7,riw,miw1,ss1,ss2 and ss3 updated 2/17/2015

5/14/18

CAMBRIA COMMUNITY SERVICES DISTRICT  
WELL WATER LEVELS FOR 5/14/18

| Well Code                                          | Distance Ref. Point to Water Level | Reference Point Distance Above Sea Level | Depth of Water to Sea Level | Remarks           |
|----------------------------------------------------|------------------------------------|------------------------------------------|-----------------------------|-------------------|
| <b>SANTA ROSA CREEK WELLS</b>                      |                                    |                                          |                             |                   |
| 23R                                                | 34.83                              | 83.42                                    | 48.59                       |                   |
| <b>SR4</b>                                         | <b>31.07</b>                       | <b>82.00</b>                             | <b>50.93</b>                |                   |
| SR3                                                | 19.84                              | 54.30                                    | 34.46                       |                   |
| SR1                                                | 17.93                              | 46.40                                    | 28.47                       |                   |
| RP#1                                               |                                    | 46.25                                    |                             |                   |
| RP#2                                               |                                    | 33.11                                    |                             | Not Read          |
| 21R3                                               | 8.08                               | 12.88                                    | 4.80                        | 40770             |
| <b>WBE</b>                                         | 12.65                              | 16.87                                    | <b>4.22</b>                 |                   |
| WBW                                                |                                    | 17.02                                    |                             | Not Read          |
| AVERAGE LEVEL OF CCSD SANTA ROSA WELLS SR1 & SR3 = |                                    |                                          |                             | 31.47 FEET        |
| <b>CCSD SANTA ROSA WELL SR4 =</b>                  |                                    |                                          |                             | <b>50.93 FEET</b> |

|                                                     |              |              |              |                                     |
|-----------------------------------------------------|--------------|--------------|--------------|-------------------------------------|
| <b>SAN SIMEON CREEK WELLS</b>                       |              |              |              |                                     |
| 16D1                                                | 7.31         | 11.36        | 4.05         |                                     |
| MW4                                                 | 11.67        | 15.95        | 4.28         |                                     |
| MW1                                                 |              | 42.11        |              | Not Read                            |
| MW2                                                 |              | 38.10        |              | Not Read                            |
| MW3                                                 |              | 49.56        |              | Not Read                            |
| 9M1                                                 |              | 65.63        |              | Not Read                            |
| 9P2                                                 | 10.43        | 19.11        | 8.68         |                                     |
| 9P7                                                 |              | 20.69        |              | Not Read                            |
| 9L1                                                 | 12.08        | 27.33        | 15.25        |                                     |
| RIW                                                 |              | 25.41        |              | Not Read                            |
| SS4                                                 | 14.15        | 25.92        | 11.77        | <b>SS4 to 9P2 Gradient = + 3.09</b> |
| MIW                                                 |              | 29.89        |              | Not Read                            |
| <b>SS3</b>                                          | <b>14.45</b> | <b>33.73</b> | <b>19.28</b> |                                     |
| <b>SS2</b>                                          | <b>13.62</b> | <b>33.16</b> | <b>19.54</b> |                                     |
| <b>SS1</b>                                          | <b>12.79</b> | <b>32.37</b> | <b>19.58</b> |                                     |
| 11B1                                                |              | 105.43       |              | Not Read                            |
| 11C1                                                | 14.24        | 98.20        | 83.96        |                                     |
| PFNW                                                |              | 93.22        |              | Not Read                            |
| 10A1                                                |              | 78.18        |              | Not Read                            |
| 10G2                                                |              | 62.95        |              | Not Read                            |
| 10G1                                                |              | 59.55        |              | Not Read                            |
| 10F2                                                |              | 66.92        |              | Not Read                            |
| 10M2                                                | 22.45        | 55.21        | 32.76        |                                     |
| 9J3                                                 |              | 43.45        |              | Not Read                            |
| lagoon                                              | 19.59        |              |              | mitigation erosion none             |
| AVERAGE LEVEL OF CCSD SAN SIMEON WELLS SS1,SS2 & SS |              |              |              | 19.47 FEET                          |

revised 6/6/16

**Red Font are the CCSD's Production Wells, as measured on 5/14/18**

reference point on 16d1,miw1,miw2,miw3,9p7,riw,miw1,ss1,ss2 and ss3 updated 2/17/2015

4/30/18

CAMBRIA COMMUNITY SERVICES DISTRICT  
WELL WATER LEVELS FOR 4/30/18

| Well Code                                          | Distance Ref. Point to Water Level | Reference Point Distance Above Sea Level | Depth of Water to Sea Level | Remarks           |
|----------------------------------------------------|------------------------------------|------------------------------------------|-----------------------------|-------------------|
| <b>SANTA ROSA CREEK WELLS</b>                      |                                    |                                          |                             |                   |
| 23R                                                | 32.50                              | 83.42                                    | 50.92                       |                   |
| <b>SR4</b>                                         | <b>30.21</b>                       | <b>82.00</b>                             | <b>51.79</b>                |                   |
| SR3                                                | 19.79                              | 54.30                                    | 34.51                       |                   |
| SR1                                                | 17.88                              | 46.40                                    | 28.52                       |                   |
| RP#1                                               |                                    | 46.25                                    |                             |                   |
| RP#2                                               |                                    | 33.11                                    |                             | Not Read          |
| 21R3                                               | 7.50                               | 12.88                                    | 5.38                        | 40682             |
| <b>WBE</b>                                         | 11.39                              | 16.87                                    | <b>5.48</b>                 |                   |
| WBW                                                | 11.68                              | 17.02                                    | 5.34                        |                   |
| AVERAGE LEVEL OF CCSD SANTA ROSA WELLS SR1 & SR3 = |                                    |                                          |                             | 31.52 FEET        |
| <b>CCSD SANTA ROSA WELL SR4 =</b>                  |                                    |                                          |                             | <b>51.79 FEET</b> |

|                                                                |              |              |              |                                     |
|----------------------------------------------------------------|--------------|--------------|--------------|-------------------------------------|
| <b>SAN SIMEON CREEK WELLS</b>                                  |              |              |              |                                     |
| 16D1                                                           | 6.85         | 11.36        | 4.51         |                                     |
| MW4                                                            | 11.24        | 15.95        | 4.71         |                                     |
| MW1                                                            | 13.50        | 42.11        | 28.61        |                                     |
| MW2                                                            | 13.71        | 38.10        | 24.39        |                                     |
| MW3                                                            | 18.20        | 49.56        | 31.36        |                                     |
| 9M1                                                            | 23.50        | 65.63        | 42.13        |                                     |
| 9P2                                                            | 10.60        | 19.11        | 8.51         |                                     |
| 9P7                                                            | 10.49        | 20.69        | 10.20        |                                     |
| 9L1                                                            | 11.91        | 27.33        | 15.42        |                                     |
| RIW                                                            | 11.42        | 25.41        | 13.99        |                                     |
| SS4                                                            | 14.07        | 25.92        | 11.85        | <b>SS4 to 9P2 Gradient = + 3.34</b> |
| MIW                                                            | 12.53        | 29.89        | 17.36        |                                     |
| <b>SS3</b>                                                     | <b>14.69</b> | <b>33.73</b> | <b>19.04</b> |                                     |
| <b>SS2</b>                                                     | <b>13.71</b> | <b>33.16</b> | <b>19.45</b> |                                     |
| <b>SS1</b>                                                     | <b>12.73</b> | <b>32.37</b> | <b>19.64</b> |                                     |
| 11B1                                                           | 19.28        | 105.43       | 86.15        |                                     |
| 11C1                                                           | 13.96        | 98.20        | 84.24        |                                     |
| PFNW                                                           | 12.96        | 93.22        | 80.26        |                                     |
| 10A1                                                           | 25.89        | 78.18        | 52.29        |                                     |
| 10G2                                                           | 19.45        | 62.95        | 43.50        |                                     |
| 10G1                                                           | 19.45        | 59.55        | 40.10        |                                     |
| 10F2                                                           | 25.88        | 66.92        | 41.04        |                                     |
| 10M2                                                           | 22.37        | 55.21        | 32.84        |                                     |
| 9J3                                                            | 16.08        | 43.45        | 27.37        |                                     |
| lagoon                                                         | 19.16        |              |              | mitigation errosion none            |
| <b>AVERAGE LEVEL OF CCSD SAN SIMEON WELLS SS1,SS2 &amp; SS</b> |              |              |              | <b>19.38 FEET</b>                   |

revised 6/6/16

**Red Font are the CCSD's Production Wells, as measured on 4/30/18**

reference point on 16d1,miw1,miw2,miw3,9p7,riw,miw1,ss1,ss2 and ss3 updat 2/17/2015

4/16/18

CAMBRIA COMMUNITY SERVICES DISTRICT  
WELL WATER LEVELS FOR 4/16/18

| Well Code                                          | Distance Ref. Point to Water Level | Reference Point Distance Above Sea Level | Depth of Water to Sea Level | Remarks           |
|----------------------------------------------------|------------------------------------|------------------------------------------|-----------------------------|-------------------|
| <b>SANTA ROSA CREEK WELLS</b>                      |                                    |                                          |                             |                   |
| 23R                                                | 34.81                              | 83.42                                    | 48.61                       |                   |
| <b>SR4</b>                                         | <b>29.67</b>                       | <b>82.00</b>                             | <b>52.33</b>                |                   |
| SR3                                                | 19.66                              | 54.30                                    | 34.64                       |                   |
| SR1                                                | 17.73                              | 46.40                                    | 28.67                       |                   |
| RP#1                                               |                                    | 46.25                                    |                             |                   |
| RP#2                                               |                                    | 33.11                                    |                             | Not Read          |
| 21R3                                               | 9.09                               | 12.88                                    | 3.79                        | 40593             |
| <b>WBE</b>                                         | 12.65                              | 16.87                                    | <b>4.22</b>                 |                   |
| WBW                                                |                                    | 17.02                                    |                             | Not Read          |
| AVERAGE LEVEL OF CCSD SANTA ROSA WELLS SR1 & SR3 = |                                    |                                          |                             | 31.66 FEET        |
| <b>CCSD SANTA ROSA WELL SR4 =</b>                  |                                    |                                          |                             | <b>52.33 FEET</b> |

|                                                                |              |              |              |                                     |
|----------------------------------------------------------------|--------------|--------------|--------------|-------------------------------------|
| <b>SAN SIMEON CREEK WELLS</b>                                  |              |              |              |                                     |
| 16D1                                                           | 8.63         | 11.36        | 2.73         |                                     |
| MW4                                                            | 12.40        | 15.95        | 3.55         |                                     |
| MW1                                                            |              | 42.11        |              | Not Read                            |
| MW2                                                            |              | 38.10        |              | Not Read                            |
| MW3                                                            |              | 49.56        |              | Not Read                            |
| 9M1                                                            |              | 65.63        |              | Not Read                            |
| 9P2                                                            | 10.41        | 19.11        | 8.70         |                                     |
| 9P7                                                            |              | 20.69        |              | Not Read                            |
| 9L1                                                            | 11.72        | 27.33        | 15.61        |                                     |
| RIW                                                            |              | 25.41        |              | Not Read                            |
| SS4                                                            | 13.86        | 25.92        | 12.06        | <b>SS4 to 9P2 Gradient = + 3.36</b> |
| MIW                                                            |              | 29.89        |              | Not Read                            |
| <b>SS3</b>                                                     | <b>14.47</b> | <b>33.73</b> | <b>19.26</b> |                                     |
| <b>SS2</b>                                                     | <b>12.99</b> | <b>33.16</b> | <b>20.17</b> |                                     |
| <b>SS1</b>                                                     | <b>12.52</b> | <b>32.37</b> | <b>19.85</b> |                                     |
| 11B1                                                           |              | 105.43       |              | Not Read                            |
| 11C1                                                           | 13.68        | 98.20        | 84.52        |                                     |
| PFNW                                                           |              | 93.22        |              | Not Read                            |
| 10A1                                                           |              | 78.18        |              | Not Read                            |
| 10G2                                                           |              | 62.95        |              | Not Read                            |
| 10G1                                                           |              | 59.55        |              | Not Read                            |
| 10F2                                                           |              | 66.92        |              | Not Read                            |
| 10M2                                                           | 22.28        | 55.21        | 32.93        |                                     |
| 9J3                                                            |              | 43.45        |              | Not Read                            |
| lagoon                                                         | 21.42        |              |              | mitigation erosion none             |
| <b>AVERAGE LEVEL OF CCSD SAN SIMEON WELLS SS1,SS2 &amp; SS</b> |              |              |              | <b>19.76 FEET</b>                   |

revised 6/6/16

**Red Font are the CCSD's Production Wells, as measured on 4/16/18**

reference point on 16d1,miw1,miw2,miw3,9p7,riw,miw1,ss1,ss2 and ss3 updated 2/17/2015

4/2/18

CAMBRIA COMMUNITY SERVICES DISTRICT  
WELL WATER LEVELS FOR 4/2/18

| Well Code                                          | Distance Ref. Point to Water Level | Reference Point Distance Above Sea Level | Depth of Water to Sea Level | Remarks           |
|----------------------------------------------------|------------------------------------|------------------------------------------|-----------------------------|-------------------|
| <b>SANTA ROSA CREEK WELLS</b>                      |                                    |                                          |                             |                   |
| 23R                                                | 31.97                              | 83.42                                    | 51.45                       |                   |
| <b>SR4</b>                                         | <b>29.17</b>                       | <b>82.00</b>                             | <b>52.83</b>                |                   |
| SR3                                                | 19.44                              | 54.30                                    | 34.86                       |                   |
| SR1                                                | 17.51                              | 46.40                                    | 28.89                       |                   |
| RP#1                                               |                                    | 46.25                                    |                             |                   |
| RP#2                                               |                                    | 33.11                                    |                             | Not Read          |
| 21R3                                               | 8.99                               | 12.88                                    | 3.89                        | 40568             |
| <b>WBE</b>                                         | <b>12.55</b>                       | <b>16.87</b>                             | <b>4.32</b>                 |                   |
| WBW                                                | 12.93                              | 17.02                                    | 4.09                        |                   |
| AVERAGE LEVEL OF CCSD SANTA ROSA WELLS SR1 & SR3 = |                                    |                                          |                             | 31.88 FEET        |
| <b>CCSD SANTA ROSA WELL SR4 =</b>                  |                                    |                                          |                             | <b>52.83 FEET</b> |

|                                                                |              |              |              |                                     |
|----------------------------------------------------------------|--------------|--------------|--------------|-------------------------------------|
| <b>SAN SIMEON CREEK WELLS</b>                                  |              |              |              |                                     |
| 16D1                                                           | 7.68         | 11.36        | 3.68         |                                     |
| MW4                                                            | 11.90        | 15.95        | 4.05         |                                     |
| MW1                                                            | 11.62        | 42.11        | 30.49        |                                     |
| MW2                                                            | 12.42        | 38.10        | 25.68        |                                     |
| MW3                                                            | 17.51        | 49.56        | 32.05        |                                     |
| 9M1                                                            | 38.44        | 65.63        | 27.19        |                                     |
| 9P2                                                            | 9.98         | 19.11        | 9.13         |                                     |
| 9P7                                                            | 7.82         | 20.69        | 12.87        |                                     |
| 9L1                                                            | 11.34        | 27.33        | 15.99        |                                     |
| RIW                                                            | 10.64        | 25.41        | 14.77        |                                     |
| SS4                                                            | 13.58        | 25.92        | 12.34        | <b>SS4 to 9P2 Gradient = + 3.21</b> |
| MIW                                                            | 11.17        | 29.89        | 18.72        |                                     |
| <b>SS3</b>                                                     | <b>13.88</b> | <b>33.73</b> | <b>19.85</b> |                                     |
| <b>SS2</b>                                                     | <b>12.54</b> | <b>33.16</b> | <b>20.62</b> |                                     |
| <b>SS1</b>                                                     | <b>12.13</b> | <b>32.37</b> | <b>20.24</b> |                                     |
| 11B1                                                           | 18.73        | 105.43       | 86.70        |                                     |
| 11C1                                                           | 13.27        | 98.20        | 84.93        |                                     |
| PFNW                                                           | 12.44        | 93.22        | 80.78        |                                     |
| 10A1                                                           | 25.35        | 78.18        | 52.83        |                                     |
| 10G2                                                           | 19.09        | 62.95        | 43.86        |                                     |
| 10G1                                                           | 17.44        | 59.55        | 42.11        |                                     |
| 10F2                                                           | 25.51        | 66.92        | 41.41        |                                     |
| 10M2                                                           | 22.09        | 55.21        | 33.12        |                                     |
| 9J3                                                            | 15.78        | 43.45        | 27.67        |                                     |
| lagoon                                                         | 20.15        |              |              | mitigation erosion none             |
| <b>AVERAGE LEVEL OF CCSD SAN SIMEON WELLS SS1,SS2 &amp; SS</b> |              |              |              | <b>20.24 FEET</b>                   |

revised 6/6/16

**Red Font are the CCSD's Production Wells, as measured on 4/2/18**

reference point on 16d1,miw1,miw2,miw3,9p7,riw,miw1,ss1,ss2 and ss3 updat 2/17/2015



3/15/18

CAMBRIA COMMUNITY SERVICES DISTRICT  
WELL WATER LEVELS FOR 3/15/18

| Well Code                     | Distance Ref. Point to Water Level | Reference Point Distance Above Sea Level | Depth of Water to Sea Level | Remarks  |
|-------------------------------|------------------------------------|------------------------------------------|-----------------------------|----------|
| <b>SANTA ROSA CREEK WELLS</b> |                                    |                                          |                             |          |
| 23R                           | 30.92                              | 83.42                                    | 52.50                       |          |
| <b>SR4</b>                    | <b>28.19</b>                       | <b>82.00</b>                             | <b>53.81</b>                |          |
| SR3                           | 19.45                              | 54.30                                    | 34.85                       |          |
| SR1                           | 17.28                              | 46.40                                    | 29.12                       |          |
| RP#1                          |                                    | 46.25                                    |                             |          |
| RP#2                          |                                    | 33.11                                    |                             | Not Read |
| 21R3                          | 8.20                               | 12.88                                    | 4.68                        | 40568    |
| <b>WBE</b>                    | <b>11.86</b>                       | <b>16.87</b>                             | <b>5.01</b>                 |          |
| WBW                           |                                    | 17.02                                    |                             | Not Read |

AVERAGE LEVEL OF CCSD SANTA ROSA WELLS SR1 & SR3 = 31.99 FEET  
**CCSD SANTA ROSA WELL SR4 = 53.81 FEET**

|                               |              |              |              |                                     |
|-------------------------------|--------------|--------------|--------------|-------------------------------------|
| <b>SAN SIMEON CREEK WELLS</b> |              |              |              |                                     |
| 16D1                          | 7.41         | 11.36        | 3.95         |                                     |
| MW4                           | 11.41        | 15.95        | 4.54         |                                     |
| MW1                           |              | 42.11        |              | Not Read                            |
| MW2                           |              | 38.10        |              | Not Read                            |
| MW3                           |              | 49.56        |              | Not Read                            |
| 9M1                           |              | 65.63        |              | Not Read                            |
| 9P2                           | 9.07         | 19.11        | 10.04        |                                     |
| 9P7                           |              | 20.69        |              | Not Read                            |
| 9L1                           | 10.82        | 27.33        | 16.51        |                                     |
| RIW                           |              | 25.41        |              | Not Read                            |
| SS4                           | 12.84        | 25.92        | 13.08        | <b>SS4 to 9P2 Gradient = + 3.04</b> |
| MIW                           |              | 29.89        |              | Not Read                            |
| <b>SS3</b>                    | <b>13.41</b> | <b>33.73</b> | <b>20.32</b> |                                     |
| <b>SS2</b>                    | <b>11.98</b> | <b>33.16</b> | <b>21.18</b> |                                     |
| <b>SS1</b>                    | <b>11.59</b> | <b>32.37</b> | <b>20.78</b> |                                     |
| 11B1                          |              | 105.43       |              | Not Read                            |
| 11C1                          | 13.10        | 98.20        | 85.10        |                                     |
| PFNW                          |              | 93.22        |              | Not Read                            |
| 10A1                          |              | 78.18        |              | Not Read                            |
| 10G2                          |              | 62.95        |              | Not Read                            |
| 10G1                          |              | 59.55        |              | Not Read                            |
| 10F2                          |              | 66.92        |              | Not Read                            |
| 10M2                          | 21.81        | 55.21        | 33.40        |                                     |
| 9J3                           |              | 43.45        |              | Not Read                            |
| lagoon                        | 20.15        |              |              | mitigation erosion none             |

AVERAGE LEVEL OF CCSD SAN SIMEON WELLS SS1,SS2 & SS 20.76 FEET

revised 6/6/16

**Red Font are the CCSD's Production Wells, as measured on 3/15/18**

reference point on 16d1,miw1,miw2,miw3,9p7,riw,miw1,ss1,ss2 and ss3 updated 2/17/2015

2/13/18

CAMBRIA COMMUNITY SERVICES DISTRICT  
WELL WATER LEVELS FOR 2/13/18

| Well Code                                          | Distance Ref. Point to Water Level | Reference Point Distance Above Sea Level | Depth of Water to Sea Level | Remarks           |
|----------------------------------------------------|------------------------------------|------------------------------------------|-----------------------------|-------------------|
| <b>SANTA ROSA CREEK WELLS</b>                      |                                    |                                          |                             |                   |
| 23R                                                | 31.94                              | 83.42                                    | 51.48                       |                   |
| <b>SR4</b>                                         | <b>29.14</b>                       | <b>82.00</b>                             | <b>52.86</b>                |                   |
| SR3                                                | 20.03                              | 54.30                                    | 34.27                       |                   |
| SR1                                                | 17.91                              | 46.40                                    | 28.49                       |                   |
| RP#1                                               |                                    | 46.25                                    |                             |                   |
| RP#2                                               |                                    | 33.11                                    |                             | Not Read          |
| 21R3                                               | 7.08                               | 12.88                                    | 5.80                        | 40502             |
| <b>WBE</b>                                         | <b>11.40</b>                       | <b>16.87</b>                             | <b>5.47</b>                 |                   |
| WBW                                                |                                    | 17.02                                    |                             | Not Read          |
| AVERAGE LEVEL OF CCSD SANTA ROSA WELLS SR1 & SR3 = |                                    |                                          |                             | 31.38 FEET        |
| <b>CCSD SANTA ROSA WELL SR4 =</b>                  |                                    |                                          |                             | <b>52.86 FEET</b> |

|                                                                |              |              |              |                                     |
|----------------------------------------------------------------|--------------|--------------|--------------|-------------------------------------|
| <b>SAN SIMEON CREEK WELLS</b>                                  |              |              |              |                                     |
| 16D1                                                           | 7.70         | 11.36        | 3.66         |                                     |
| MW4                                                            | 12.07        | 15.95        | 3.88         |                                     |
| MW1                                                            |              | 42.11        |              | Not Read                            |
| MW2                                                            |              | 38.10        |              | Not Read                            |
| MW3                                                            |              | 49.56        |              | Not Read                            |
| 9M1                                                            |              | 65.63        |              | Not Read                            |
| 9P2                                                            | 11.13        | 19.11        | 7.98         |                                     |
| 9P7                                                            |              | 20.69        |              | Not Read                            |
| 9L1                                                            | 16.22        | 27.33        | 11.11        |                                     |
| RIW                                                            |              | 25.41        |              | Not Read                            |
| SS4                                                            | 16.35        | 25.92        | 9.57         | <b>SS4 to 9P2 Gradient = + 1.59</b> |
| MIW                                                            |              | 29.89        |              | Not Read                            |
| <b>SS3</b>                                                     | <b>20.67</b> | <b>33.73</b> | <b>13.06</b> |                                     |
| <b>SS2</b>                                                     | <b>20.05</b> | <b>33.16</b> | <b>13.11</b> |                                     |
| <b>SS1</b>                                                     | <b>19.43</b> | <b>32.37</b> | <b>12.94</b> |                                     |
| 11B1                                                           |              | 105.43       |              | Not Read                            |
| 11C1                                                           | 20.80        | 98.20        | 77.40        |                                     |
| PFNW                                                           |              | 93.22        |              | Not Read                            |
| 10A1                                                           |              | 78.18        |              | Not Read                            |
| 10G2                                                           |              | 62.95        |              | Not Read                            |
| 10G1                                                           |              | 59.55        |              | Not Read                            |
| 10F2                                                           |              | 66.92        |              | Not Read                            |
| 10M2                                                           | 28.46        | 55.21        | 26.75        |                                     |
| 9J3                                                            |              | 43.45        |              | Not Read                            |
| lagoon                                                         | 19.98        |              |              | mitigation erosion none             |
| <b>AVERAGE LEVEL OF CCSD SAN SIMEON WELLS SS1,SS2 &amp; SS</b> |              |              |              | <b>13.04 FEET</b>                   |

revised 6/6/16

**Red Font are the CCSD's Production Wells, as measured on 2/13/18**

reference point on 16d1,miw1,miw2,miw3,9p7,riw,miw1,ss1,ss2 and ss3 updated 2/17/2015

2/5/18

CAMBRIA COMMUNITY SERVICES DISTRICT  
WELL WATER LEVELS FOR 2/5/18

| Well Code                                          | Distance Ref. Point to Water Level | Reference Point Distance Above Sea Level | Depth of Water to Sea Level | Remarks           |
|----------------------------------------------------|------------------------------------|------------------------------------------|-----------------------------|-------------------|
| <b>SANTA ROSA CREEK WELLS</b>                      |                                    |                                          |                             |                   |
| 23R                                                | 32.52                              | 83.42                                    | 50.90                       |                   |
| <b>SR4</b>                                         | <b>29.70</b>                       | <b>82.00</b>                             | <b>52.30</b>                |                   |
| SR3                                                | 20.00                              | 54.30                                    | 34.30                       |                   |
| SR1                                                | 17.88                              | 46.40                                    | 28.52                       |                   |
| RP#1                                               |                                    | 46.25                                    |                             |                   |
| RP#2                                               |                                    | 33.11                                    |                             | Not Read          |
| 21R3                                               | 7.19                               | 12.88                                    | 5.69                        | 40450             |
| <b>WBE</b>                                         | <b>11.17</b>                       | <b>16.87</b>                             | <b>5.70</b>                 |                   |
| WBW                                                | 11.30                              | 17.02                                    | 5.72                        |                   |
| AVERAGE LEVEL OF CCSD SANTA ROSA WELLS SR1 & SR3 = |                                    |                                          |                             | 31.41 FEET        |
| <b>CCSD SANTA ROSA WELL SR4 =</b>                  |                                    |                                          |                             | <b>52.30 FEET</b> |

|                                                                |              |              |              |                                     |
|----------------------------------------------------------------|--------------|--------------|--------------|-------------------------------------|
| <b>SAN SIMEON CREEK WELLS</b>                                  |              |              |              |                                     |
| 16D1                                                           | 7.61         | 11.36        | 3.75         |                                     |
| MW4                                                            | 12.01        | 15.95        | 3.94         |                                     |
| MW1                                                            | 18.06        | 42.11        | 24.05        |                                     |
| MW2                                                            | 17.40        | 38.10        | 20.70        |                                     |
| MW3                                                            | 23.32        | 49.56        | 26.24        |                                     |
| 9M1                                                            | 34.97        | 65.63        | 30.66        |                                     |
| 9P2                                                            | 10.86        | 19.11        | 8.25         |                                     |
| 9P7                                                            | 11.56        | 20.69        | 9.13         |                                     |
| 9L1                                                            | 15.66        | 27.33        | 11.67        |                                     |
| RIW                                                            | 15.28        | 25.41        | 10.13        |                                     |
| SS4                                                            | 16.01        | 25.92        | 9.91         | <b>SS4 to 9P2 Gradient = + 1.66</b> |
| MIW                                                            | 16.66        | 29.89        | 13.23        |                                     |
| <b>SS3</b>                                                     | <b>19.76</b> | <b>33.73</b> | <b>13.97</b> |                                     |
| <b>SS2</b>                                                     | <b>19.01</b> | <b>33.16</b> | <b>14.15</b> |                                     |
| <b>SS1</b>                                                     | <b>18.60</b> | <b>32.37</b> | <b>13.77</b> |                                     |
| 11B1                                                           | 26.03        | 105.43       | 79.40        |                                     |
| 11C1                                                           | 20.23        | 98.20        | 77.97        |                                     |
| PFNW                                                           | 17.64        | 93.22        | 75.58        |                                     |
| 10A1                                                           | 29.28        | 78.18        | 48.90        |                                     |
| 10G2                                                           | 22.75        | 62.95        | 40.20        |                                     |
| 10G1                                                           | 21.19        | 59.55        | 38.36        |                                     |
| 10F2                                                           | 29.65        | 66.92        | 37.27        |                                     |
| 10M2                                                           | 28.41        | 55.21        | 26.80        |                                     |
| 9J3                                                            | 21.78        | 43.45        | 21.67        |                                     |
| lagoon                                                         | 17.55        |              |              | mitigation erosion none             |
| <b>AVERAGE LEVEL OF CCSD SAN SIMEON WELLS SS1,SS2 &amp; SS</b> |              |              |              | <b>13.96 FEET</b>                   |

revised 6/6/16

**Red Font are the CCSD's Production Wells, as measured on 2/5/18**

reference point on 16d1,miw1,miw2,miw3,9p7,riw,miw1,ss1,ss2 and ss3 updated 2/17/2015

1/16/18

CAMBRIA COMMUNITY SERVICES DISTRICT  
WELL WATER LEVELS FOR 1/16/18

| Well Code                                          | Distance Ref. Point to Water Level | Reference Point Distance Above Sea Level | Depth of Water to Sea Level | Remarks           |
|----------------------------------------------------|------------------------------------|------------------------------------------|-----------------------------|-------------------|
| <b>SANTA ROSA CREEK WELLS</b>                      |                                    |                                          |                             |                   |
| 23R                                                | 33.68                              | 83.42                                    | 49.74                       |                   |
| <b>SR4</b>                                         | <b>30.75</b>                       | <b>82.00</b>                             | <b>51.25</b>                |                   |
| SR3                                                | 19.97                              | 54.30                                    | 34.33                       |                   |
| SR1                                                | 17.82                              | 46.40                                    | 28.58                       |                   |
| RP#1                                               |                                    | 46.25                                    |                             |                   |
| RP#2                                               |                                    | 33.11                                    |                             | Not Read          |
| 21R3                                               | 6.42                               | 12.88                                    | 6.46                        | 40450             |
| <b>WBE</b>                                         | 10.41                              | 16.87                                    | <b>6.46</b>                 |                   |
| WBW                                                |                                    | 17.02                                    |                             | Not Read          |
| AVERAGE LEVEL OF CCSD SANTA ROSA WELLS SR1 & SR3 = |                                    |                                          |                             | 31.46 FEET        |
| <b>CCSD SANTA ROSA WELL SR4 =</b>                  |                                    |                                          |                             | <b>51.25 FEET</b> |

|                                                                |              |              |              |                                     |
|----------------------------------------------------------------|--------------|--------------|--------------|-------------------------------------|
| <b>SAN SIMEON CREEK WELLS</b>                                  |              |              |              |                                     |
| 16D1                                                           | 6.11         | 11.36        | 5.25         |                                     |
| MW4                                                            | 10.81        | 15.95        | 5.14         |                                     |
| MW1                                                            |              | 42.11        |              | Not Read                            |
| MW2                                                            |              | 38.10        |              | Not Read                            |
| MW3                                                            |              | 49.56        |              | Not Read                            |
| 9M1                                                            |              | 65.63        |              | Not Read                            |
| 9P2                                                            | 10.85        | 19.11        | 8.26         |                                     |
| 9P7                                                            |              | 20.69        |              | Not Read                            |
| 9L1                                                            | 15.86        | 27.33        | 11.47        |                                     |
| RIW                                                            |              | 25.41        |              | Not Read                            |
| SS4                                                            | 16.08        | 25.92        | 9.84         | <b>SS4 to 9P2 Gradient = + 1.58</b> |
| MIW                                                            |              | 29.89        |              | Not Read                            |
| <b>SS3</b>                                                     | <b>19.82</b> | <b>33.73</b> | <b>13.91</b> |                                     |
| <b>SS2</b>                                                     | <b>19.07</b> | <b>33.16</b> | <b>14.09</b> |                                     |
| <b>SS1</b>                                                     | <b>18.66</b> | <b>32.37</b> | <b>13.71</b> |                                     |
| 11B1                                                           |              | 105.43       |              | Not Read                            |
| 11C1                                                           | 19.63        | 98.20        | 78.57        |                                     |
| PFNW                                                           |              | 93.22        |              | Not Read                            |
| 10A1                                                           |              | 78.18        |              | Not Read                            |
| 10G2                                                           |              | 62.95        |              | Not Read                            |
| 10G1                                                           |              | 59.55        |              | Not Read                            |
| 10F2                                                           |              | 66.92        |              | Not Read                            |
| 10M2                                                           | 28.60        | 55.21        | 26.61        |                                     |
| 9J3                                                            |              | 43.45        |              | Not Read                            |
| lagoon                                                         | 17.55        |              |              | mitigation erosion none             |
| <b>AVERAGE LEVEL OF CCSD SAN SIMEON WELLS SS1,SS2 &amp; SS</b> |              |              |              | <b>13.90 FEET</b>                   |

revised 6/6/16

**Red Font are the CCSD's Production Wells, as measured on 1/16/18**

reference point on 16d1,miw1,miw2,miw3,9p7,riw,miw1,ss1,ss2 and ss3 updated 2/17/2015

1/2/18

CAMBRIA COMMUNITY SERVICES DISTRICT  
WELL WATER LEVELS FOR 1/2/18

| Well Code                                          | Distance Ref. Point to Water Level | Reference Point Distance Above Sea Level | Depth of Water to Sea Level | Remarks           |
|----------------------------------------------------|------------------------------------|------------------------------------------|-----------------------------|-------------------|
| <b>SANTA ROSA CREEK WELLS</b>                      |                                    |                                          |                             |                   |
| 23R                                                | 33.95                              | 83.42                                    | 49.47                       |                   |
| <b>SR4</b>                                         | <b>30.68</b>                       | <b>82.00</b>                             | <b>51.32</b>                |                   |
| SR3                                                | 20.01                              | 54.30                                    | 34.29                       |                   |
| SR1                                                | 17.91                              | 46.40                                    | 28.49                       |                   |
| RP#1                                               |                                    | 46.25                                    |                             |                   |
| RP#2                                               |                                    | 33.11                                    |                             | Not Read          |
| 21R3                                               | 8.27                               | 12.88                                    | 4.61                        | 40450             |
| <b>WBE</b>                                         | 12.10                              | 16.87                                    | <b>4.77</b>                 |                   |
| WBW                                                | 12.36                              | 17.02                                    | 4.66                        |                   |
| AVERAGE LEVEL OF CCSD SANTA ROSA WELLS SR1 & SR3 = |                                    |                                          |                             | 31.39 FEET        |
| <b>CCSD SANTA ROSA WELL SR4 =</b>                  |                                    |                                          |                             | <b>51.32 FEET</b> |

|                                                                |              |              |              |                                     |
|----------------------------------------------------------------|--------------|--------------|--------------|-------------------------------------|
| <b>SAN SIMEON CREEK WELLS</b>                                  |              |              |              |                                     |
| 16D1                                                           | 8.12         | 11.36        | 3.24         |                                     |
| MW4                                                            | 12.44        | 15.95        | 3.51         |                                     |
| MW1                                                            | 17.55        | 42.11        | 24.56        |                                     |
| MW2                                                            | 17.02        | 38.10        | 21.08        |                                     |
| MW3                                                            | 22.77        | 49.56        | 26.79        |                                     |
| 9M1                                                            | 28.49        | 65.63        | 37.14        |                                     |
| 9P2                                                            | 10.97        | 19.11        | 8.14         |                                     |
| 9P7                                                            | 11.57        | 20.69        | 9.12         |                                     |
| 9L1                                                            | 16.30        | 27.33        | 11.03        |                                     |
| RIW                                                            | 15.91        | 25.41        | 9.50         |                                     |
| SS4                                                            | 16.31        | 25.92        | 9.61         | <b>SS4 to 9P2 Gradient = + 1.47</b> |
| MIW                                                            | 17.40        | 29.89        | 12.49        |                                     |
| <b>SS3</b>                                                     | <b>20.52</b> | <b>33.73</b> | <b>13.21</b> |                                     |
| <b>SS2</b>                                                     | <b>19.80</b> | <b>33.16</b> | <b>13.36</b> |                                     |
| <b>SS1</b>                                                     | <b>19.41</b> | <b>32.37</b> | <b>12.96</b> |                                     |
| 11B1                                                           | 34.34        | 105.43       | 71.09        |                                     |
| 11C1                                                           | 28.16        | 98.20        | 70.04        |                                     |
| PFNW                                                           | 24.85        | 93.22        | 68.37        |                                     |
| 10A1                                                           | 32.98        | 78.18        | 45.20        |                                     |
| 10G2                                                           | 24.90        | 62.95        | 38.05        |                                     |
| 10G1                                                           | 23.21        | 59.55        | 36.34        |                                     |
| 10F2                                                           | 31.50        | 66.92        | 35.42        |                                     |
| 10M2                                                           | 29.50        | 55.21        | 25.71        |                                     |
| 9J3                                                            | 22.80        | 43.45        | 20.65        |                                     |
| lagoon                                                         | 20.39        |              |              | mitigation erosion none             |
| <b>AVERAGE LEVEL OF CCSD SAN SIMEON WELLS SS1,SS2 &amp; SS</b> |              |              |              | <b>13.18 FEET</b>                   |

revised 6/6/16

**Red Font are the CCSD's Production Wells, as measured on 1/2/18**

reference point on 16d1,miw1,miw2,miw3,9p7,riw,miw1,ss1,ss2 and ss3 updated 2/17/2015